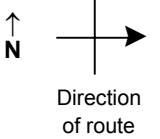


SPEED STUDY DATA SHEET

Date 10/03/06

County MUS

Municipality Muskingum County



Highway name & number 0108 (BOGGS RD)

Street classification STANDARD RURAL

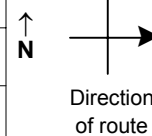
Log point	*	**	PHYSICAL CONDITION						*	**	TRAFFIC CONTROL DEVICES			SPEED		ACCIDENTS	Test Runs
														85%	PACE		
0.6																	
0.5											S3-1	T					
0.4																	
0.3											R2-1-35	T					
0.2																	
0.1																	
0.0											R1-1	T					

Edge of berm | 3 | 9 | Edge of pavement | 9 | 3 | Edge of berm

SPEED STUDY DATA SHEET

 Date 10/03/06

 County MUS

 Municipality Muskingum County

 Highway name & number 0108 (BOGGS RD)

 Street classification STANDARD RURAL

Log point	* **		PHYSICAL CONDITION						* **		TRAFFIC CONTROL DEVICES				SPEED		ACCIDENTS	Test Runs	
															85%	PACE			
2.0																			
1.9																			
1.8																			
1.7																			
1.6																			
1.5																			
1.4																			

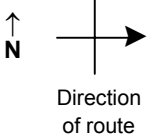
Edge of berm | 3 | 9 | Edge of pavement | 9 | 3 | Edge of berm

SPEED STUDY DATA SHEET

Date 10/03/06

County MUS

Municipality Muskingum County



Highway name & number 0108 (BOGGS RD)

Street classification STANDARD RURAL

Log point	*	**	PHYSICAL CONDITION										*	**	TRAFFIC CONTROL DEVICES				SPEED		ACCIDENTS	Test Runs
																			85%	PACE		
2.7			○									○ ₂										
2.6			○									⊕										
2.5			○									○										
2.4			○									○			W13-1-25	┐						
2.3			○									○			W11-H13/truck	┐						
2.2			●									○										
2.1			○									○										

Edge of berm | 3 | 9 | Edge of pavement | 9 | 3 | Edge of berm

