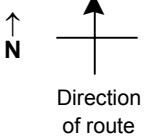


# SPEED STUDY DATA SHEET

Date 10/03/06

County MUS

Municipality Muskingum County



Highway name & number 0114 (STEEL HILL RD)

Street classification STANDARD RURAL

Log point	*	**	PHYSICAL CONDITION						*	**	TRAFFIC CONTROL DEVICES			SPEED		ACCIDENTS	Test Runs
														85%	PACE		
1.6																	
1.5																	
1.4																	
1.3																	
1.2																	
1.1							○										
1.0																	

Edge of berm | 3 | 9 | Edge of pavement | 9 | 3 | Edge of berm

# SPEED STUDY DATA SHEET

Date 10/03/06

County MUS

Municipality Muskingum County

Highway name & number 0114 (STEEL HILL RD)

Street classification STANDARD RURAL



Direction  
of route

Log point	*	**	PHYSICAL CONDITION						*	**	TRAFFIC CONTROL DEVICES			SPEED		ACCIDENTS	Test Runs
			85%	PACE	85%	PACE											
2.3																	
2.2																	
2.1																	
												R1-1					
2.0																	
1.9																	
1.8																	
1.7																	

CR 98 (PROSPECT CHURCH RD)  
TR 98 (PROSPECT CHURCH RD)



R1-1

Edge of berm | 3 | 9 | Edge of pavement | 9 | 3 | Edge of berm