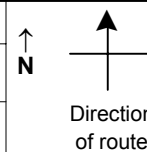


SPEED STUDY DATA SHEET

Date 10/04/06

County MUS

Municipality Muskingum County



Highway name & number 0116 (MCGLADE SCHOOL RD)

Street classification STANDARD RURAL

Log point	* **		PHYSICAL CONDITION										* **		TRAFFIC CONTROL DEVICES				SPEED		ACCIDENTS	Test Runs
															85%	PACE						
0.6			TR 394 (GREEN RD)																			
0.5																						
0.4															W11-H13/truck	▬		S3-1				
0.3																						
0.2																						
0.1															OM-3R	▬		OM-3L				
															OM-3L	▬		OM-3R				
																		R2-1-35				
																		W11-14				
0.0			SR 60												R1-1	▬		Bridge Ahd/20T				

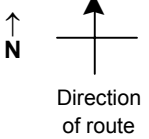
Edge of berm | 3 | 10 | Edge of pavement | 10 | 3 | Edge of berm

SPEED STUDY DATA SHEET

Date 10/04/06

County MUS

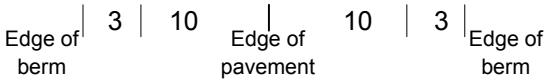
Municipality Muskingum County



Highway name & number 0116 (MCGLADE SCHOOL RD)

Street classification STANDARD RURAL

Log point	* **		PHYSICAL CONDITION										* **		TRAFFIC CONTROL DEVICES				SPEED		ACCIDENTS	Test Runs
																			85%	PACE		
1.3																						
1.2																						
1.1																						
1.0																						
0.9																						
0.8																						
0.7																						

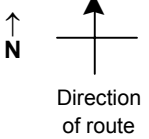


SPEED STUDY DATA SHEET

Date 10/04/06

County MUS

Municipality Muskingum County



Highway name & number 0116 (MCGLADE SCHOOL RD)

Street classification STANDARD RURAL

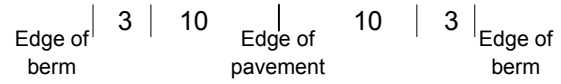
Log point	* **		PHYSICAL CONDITION										* **		TRAFFIC CONTROL DEVICES				SPEED		ACCIDENTS	Test Runs
																			85%	PACE		
2.0																						
1.9																						
1.8																						
1.7																						
1.6																						
1.5																						
1.4																						

W11-5

TR 151 (CHUG RUN)

OM-3R
OM-3L

OM-3L
OM-3R



SPEED STUDY DATA SHEET

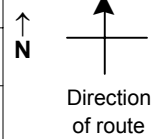
Date 10/04/06

County MUS

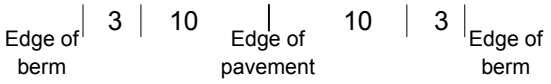
Municipality Muskingum County

Highway name & number 0116 (MCGLADE SCHOOL RD)

Street classification STANDARD RURAL



Log point	* **		PHYSICAL CONDITION										* **		TRAFFIC CONTROL DEVICES					SPEED		ACCIDENTS	Test Runs							
																				85%	PACE									
			○													○														
2.7																○														
2.6																														
2.5			○																											
2.4																○	○		R2-1-35	T										
2.3																														
2.2																														
2.1			○																											

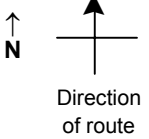


SPEED STUDY DATA SHEET

Date 10/04/06

County MUS

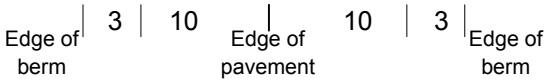
Municipality Muskingum County



Highway name & number 0116 (MCGLADE SCHOOL RD)

Street classification STANDARD RURAL

Log point	* **		PHYSICAL CONDITION								* **		TRAFFIC CONTROL DEVICES				SPEED		ACCIDENTS	Test Runs			
																	85%	PACE					
3.4													OM-3R	T					OM-3R				
													OM-3L	T					W3-1				
																			W5-3				
3.3													W5-3	T									
3.2																							
3.1																			R2-1-35				
																			W5-3				
3.0																							
2.9																							
2.8																			S3-1				

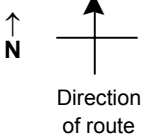


SPEED STUDY DATA SHEET

Date 10/04/06

County MUS

Municipality Muskingum County



Highway name & number 0116 (MCGLADE SCHOOL RD)

Street classification STANDARD RURAL

Log point	* **		PHYSICAL CONDITION						* **		TRAFFIC CONTROL DEVICES			SPEED		ACCIDENTS	Test Runs	
														85%	PACE			
4.1																		
4.0			∩					∩										
3.9											W10-1	T						
											W11-1	T						
3.8			X		+++++		X											
										W15-97	T							
										W11-7	T			T	W11-1			
														T	W15-97			
3.7														T	W10-1			
										W3-1	T			T	R16-H4			
														T	W11-7			
3.6																		
										R1-1	T							
										W5-3	T							
														T	R1-1			
3.5			∩											T	OM-3L			

