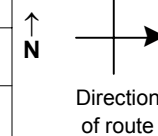


SPEED STUDY DATA SHEET

Date 10/05/06

County MUS

Municipality Muskingum County



Highway name & number 0126 (WESLEY CHAPEL RD)

Street classification STANDARD RURAL

Log point	* **	PHYSICAL CONDITION						* **	TRAFFIC CONTROL DEVICES				SPEED		ACCIDENTS	Test Runs
													85%	PACE		
0.6																
0.5																
0.4																
0.3																
0.2																
0.1																
0.0																

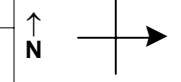
Edge of berm | 2 | 11 | Edge of pavement | 11 | 2 | Edge of berm

SPEED STUDY DATA SHEET

Date 10/05/06

County MUS

Municipality Muskingum County



Highway name & number 0126 (WESLEY CHAPEL RD)

Street classification STANDARD RURAL

Direction of route

Log point	* **		PHYSICAL CONDITION										* **		TRAFFIC CONTROL DEVICES			SPEED		ACCIDENTS	Test Runs				
																	85%	PACE							
1.3																									
1.2																									
1.1																									
1.0																									
0.9																									
0.8																									
0.7																									

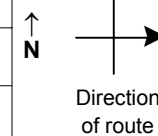
Edge of berm | 2 | 11 | Edge of pavement | 11 | 2 | Edge of berm

SPEED STUDY DATA SHEET

Date 10/05/06

County MUS

Municipality Muskingum County



Highway name & number 0126 (WESLEY CHAPEL RD)

Street classification STANDARD RURAL

Log point	* **		PHYSICAL CONDITION										* **		TRAFFIC CONTROL DEVICES				SPEED		ACCIDENTS	Test Runs					
																							85%	PACE			
													○														
													○														
2.0													○														
			○										○														
			○										○														
1.9			○										○														
													○														
													○														
1.8			○										○														
			○										○														
			○										○														
													○														
													○														
1.6			○										○														
			○										○														
													○														
1.5													○														
													○														
			○										○														
1.4													○														

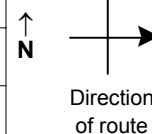
Edge of berm | 2 | 11 | Edge of pavement | 11 | 2 | Edge of berm

SPEED STUDY DATA SHEET

Date 10/05/06

County MUS

Municipality Muskingum County



Highway name & number 0126 (WESLEY CHAPEL RD)

Street classification STANDARD RURAL

Log point	* **			PHYSICAL CONDITION				* **			TRAFFIC CONTROL DEVICES			SPEED		ACCIDENTS	Test Runs
													85%	PACE			
2.7						TR 90 (SLACK RD)	Y										
2.6					TR 90 (SLACK RD)												
2.5																	
2.4																	
2.3																	
2.2																	
2.1																	

R5-H2B
R2-1-35

R2-1-35
R5-H2B

S3-1

Edge of berm | 2 | 11 | Edge of pavement | 11 | 2 | Edge of berm

Sheet 4 of 7 sheets

SPEED STUDY DATA SHEET

 Date 10/05/06

 County MUS

 Municipality Muskingum County

 Highway name & number 0126 (WESLEY CHAPEL RD)

 Street classification STANDARD RURAL

Direction of route

Log point	* **		PHYSICAL CONDITION						* **		TRAFFIC CONTROL DEVICES			SPEED		ACCIDENTS	Test Runs	
														85%	PACE			
3.4																		
3.3																		
3.2																		
3.1																		
3.0																		
2.9																		
2.8																		

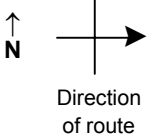
Edge of berm | 2 | 11 | Edge of pavement | 11 | 2 | Edge of berm

SPEED STUDY DATA SHEET

Date 10/05/06

County MUS

Municipality Muskingum County



Highway name & number 0126 (WESLEY CHAPEL RD)

Street classification STANDARD RURAL

Log point	***		PHYSICAL CONDITION										***		TRAFFIC CONTROL DEVICES				SPEED		ACCIDENTS	Test Runs					
																W2-1	T	I					85%	PACE			
4.1																											
4.0																											
3.9																											
3.8																											
3.7																											
3.6																											
3.5																											

Y PETE HOPE LN
 DUMOLT LN Y

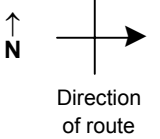
Edge of berm | 2 | 11 | Edge of pavement | 11 | 2 | Edge of berm

SPEED STUDY DATA SHEET

Date 10/05/06

County MUS

Municipality Muskingum County



Highway name & number 0126 (WESLEY CHAPEL RD)

Street classification STANDARD RURAL

Log point	*	**	PHYSICAL CONDITION										*	**	TRAFFIC CONTROL DEVICES			SPEED		ACCIDENTS	Test Runs	
																		85%	PACE			
4.8																						
4.7																						
4.6																						
4.5																						
4.4																						
4.3																						
4.2																						

CR 33 (BAGLEY RD)
 SPUR TO CR 33 (BAGLEY RD)

R5-H2B R1-1
 R2-1-35

W3-1A

S3-1

Edge of berm | 2 | 11 | Edge of pavement | 11 | 2 | Edge of berm