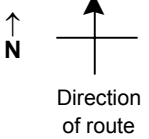


SPEED STUDY DATA SHEET

Date 10/05/06

County MUS

Municipality Muskingum County



Highway name & number 0143 (POTTS LN)

Street classification STANDARD RURAL

Log point	* **		PHYSICAL CONDITION										* **		TRAFFIC CONTROL DEVICES				SPEED		ACCIDENTS	Test Runs							
																							85%	PACE					
1.3																		W1-2R	T										
1.2																													
1.1																		R2-1-35	T										
1.0																													
0.9																													
0.8																													
0.7																		W1-2R	T										

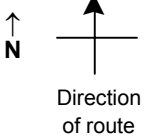
Edge of berm | 2 | 11 | Edge of pavement | 11 | 2 | Edge of berm

SPEED STUDY DATA SHEET

Date 10/05/06

County MUS

Municipality Muskingum County



Highway name & number 0143 (POTTS LN)

Street classification STANDARD RURAL

Log point	* **		PHYSICAL CONDITION										* **		TRAFFIC CONTROL DEVICES				SPEED		ACCIDENTS	Test Runs												
																				85%			PACE											
2.0																																		
1.9																CR 71 (COOPERMILL RD)					R12-1/16 Ton	T												
																				R2-1-35	T													
																				OM-3R	T													
																				OM-3L	T													
1.8																																		
1.7																																		
1.6																																		
1.5																																		
1.4																																		

Edge of berm | 2 | 11 | Edge of pavement | 11 | 2 | Edge of berm