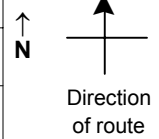


# SPEED STUDY DATA SHEET

 Date 10/05/06

 County MUS

 Municipality Muskingum County

 Highway name & number 0145 (PERINE RD)

 Street classification STANDARD RURAL

Log point	* **		PHYSICAL CONDITION										* **		TRAFFIC CONTROL DEVICES				SPEED		ACCIDENTS	Test Runs					
0.6																											
0.5																											
0.4																											
0.3																											
0.2																											
0.1																											
0.0																											

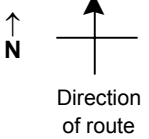
Edge of berm | 3 | 7 | Edge of pavement | 7 | 3 | Edge of berm

# SPEED STUDY DATA SHEET

Date 10/05/06

County MUS

Municipality Muskingum County



Highway name & number 0145 (PERINE RD)

Street classification STANDARD RURAL

Log point	*	**	PHYSICAL CONDITION							*	**	TRAFFIC CONTROL DEVICES			SPEED		ACCIDENTS	Test Runs
			85%	PACE	OM-3R	OM-3L	OM-3R	OM-3L										
1.3			○															
1.2			○															
1.1				⌋		⌋												
1.0																		
0.9																		
0.8																		
0.7																		

OM-3R    T    OM-3L  
W5-3    T  
OM-3L    T    OM-3R

W1-5L    T

○

Edge of berm | 3 | 7 | Edge of pavement | 7 | 3 | Edge of berm

# SPEED STUDY DATA SHEET

Date 10/05/06

County MUS

Municipality Muskingum County



Highway name & number 0145 (PERINE RD)

Street classification STANDARD RURAL

Direction of route

Log point	* **		PHYSICAL CONDITION										* **		TRAFFIC CONTROL DEVICES				SPEED		ACCIDENTS	Test Runs		
															85%	PACE								
2.0																								
1.9																								
1.8																								
1.7																								
1.6																								
1.5																								
1.4																								

CR 34 (RIDGE RD)

R2-1-35

R1-1

W15-97

Edge of berm | 3 | 7 | Edge of pavement | 7 | 3 | Edge of berm

Sheet 3 of 3 sheets