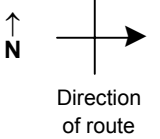


SPEED STUDY DATA SHEET

Date 10/11/06

County MUS

Municipality Muskingum County



Highway name & number 0146 (MILITARY RD)

Street classification STANDARD RURAL

Log point	* **		PHYSICAL CONDITION										* **		TRAFFIC CONTROL DEVICES				SPEED		ACCIDENTS	Test Runs	
															85%	PACE							
0.6																							
0.5			O			∩	NOB HILL							S3-1	T								
0.4			O O 2			*	APARTMENT ENTRANCE																
0.3																							
0.2			O			*	∩	NORTH POINTE DR CUL-DE-SAC				*	∩	R3-H8BH	T								
0.1			O O 3																				
0.0			O O 2			∩	CR 660 (KEARNS RD)					∩		R1-1	T			R2-1-50	T				
																		W11-3	T				
																		W14-2	T				

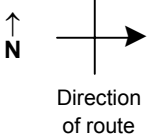
Edge of berm | 3 | 12 | Edge of pavement | 12 | 3 | Edge of berm

SPEED STUDY DATA SHEET

Date 10/11/06

County MUS

Municipality Muskingum County



Highway name & number 0146 (MILITARY RD)

Street classification STANDARD RURAL

Log point	* **	PHYSICAL CONDITION						* **	TRAFFIC CONTROL DEVICES			SPEED		ACCIDENTS	Test Runs
												85%	PACE		
1.3															
1.2				*	*										
1.1		O2		/	//	\					b				
1.0				*	CEMETERY ENTRANCE										
0.9															
0.8															
0.7															

ASPHALT CHANGE
PFEIFER DR

BOWERS LANE

W13-1-35
W2-2
I-H2A
R2-5A
W13-1-35
W2-2

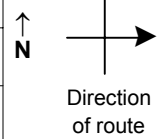
Edge of berm | 3 | 12 | Edge of pavement | 12 | 3 | Edge of berm

SPEED STUDY DATA SHEET

Date 10/11/06

County MUS

Municipality Muskingum County



Highway name & number 0146 (MILITARY RD)

Street classification STANDARD RURAL

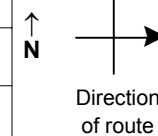
Log point	* **		PHYSICAL CONDITION						* **		TRAFFIC CONTROL DEVICES				SPEED		ACCIDENTS	Test Runs				
															85%	PACE						
2.7			○						○		W1-8	┐										
			○						○		W1-8	┐	o									
			○						○		S3-1	┐	o									
			○						○													
			○						○													
			○						○													
2.6			○						○	2												
			○						○	2												
			○						○													
			○						○													
			○						○													
2.5			○						○		S5-H4	┐										
2.4																						
2.3																						
2.2																						
2.1																						

Edge of berm | 3 | 12 | Edge of pavement | 12 | 3 | Edge of berm

SPEED STUDY DATA SHEET

 Date 10/11/06

 County MUS

 Municipality Muskingum County

 Highway name & number 0146 (MILITARY RD)

 Street classification STANDARD RURAL

Log point	* **		PHYSICAL CONDITION						* **		TRAFFIC CONTROL DEVICES				SPEED		ACCIDENTS	Test Runs
															85%	PACE		
3.4			●															
3.3																		
3.2																		
3.1																		
3.0																		
2.9																		
2.8																		

Edge of berm | 3 | 12 | Edge of pavement | 12 | 3 | Edge of berm

SPEED STUDY DATA SHEET

Date 10/11/06

County MUS

Municipality Muskingum County



Highway name & number 0146 (MILITARY RD)

Street classification STANDARD RURAL

Direction of route

Log point	*	**	PHYSICAL CONDITION						*	**	TRAFFIC CONTROL DEVICES			SPEED		ACCIDENTS	Test Runs	
			85%	PACE														
4.1																		
4.0																		
3.9																		
3.8																		
3.7																		
3.6																		
3.5																		

Edge of berm | 3 | 12 | Edge of pavement | 12 | 3 | Edge of berm