

# SPEED STUDY DATA SHEET

Date 10/04/06

County MUS

Municipality Muskingum County

↑  
N

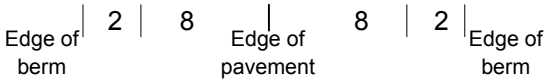


Direction  
of route

Highway name & number 0148 (BAUGHMAN RD)

Street classification STANDARD RURAL

Log point	* **		PHYSICAL CONDITION										* **		TRAFFIC CONTROL DEVICES				SPEED		ACCIDENTS	Test Runs
																			85%	PACE		
0.6																						
0.5																						
0.4																						
0.3																						
0.2																						
0.1																						
0.0																						



CR 407 (BAKERS RUN RD)

W1-5L

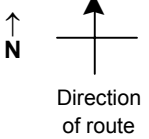
R2-1-35

# SPEED STUDY DATA SHEET

Date 10/04/06

County MUS

Municipality Muskingum County



Highway name & number 0148 (BAUGHMAN RD)

Street classification STANDARD RURAL

Log point	* **		PHYSICAL CONDITION										* **		TRAFFIC CONTROL DEVICES					SPEED		ACCIDENTS	Test Runs		
																				85%	PACE				
1.3																									
1.2																									
1.1			○											○											
1.0																									
0.9																									
0.8																									
0.7			○																						

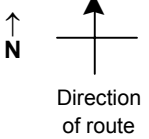
Edge of berm | 2 | 8 | Edge of pavement | 8 | 2 | Edge of berm

# SPEED STUDY DATA SHEET

Date 10/04/06

County MUS

Municipality Muskingum County



Highway name & number 0148 (BAUGHMAN RD)

Street classification STANDARD RURAL

Log point	*	**	PHYSICAL CONDITION								*	**	TRAFFIC CONTROL DEVICES				SPEED		ACCIDENTS	Test Runs
			85%		PACE															
2.0																				
1.9																				
1.8																				
1.7																				
1.6																				
1.5																				
1.4																				

TR 149 (CONCORD RD)  
SPUR TO TR 149 (CONCORD RD)

R2-1-35

