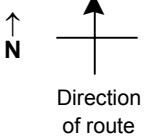


SPEED STUDY DATA SHEET

Date 10/04/06

County MUS

Municipality Muskingum County



Highway name & number 0150 (BELLVIEW DR)

Street classification STANDARD RURAL

Log point	* **		PHYSICAL CONDITION						* **		TRAFFIC CONTROL DEVICES			SPEED		ACCIDENTS	Test Runs	
														85%	PACE			
0.6																		
0.5																		
0.4																		
0.3																		
0.2																		
0.1																		
0.0																		

TR 1431 (DUR MEL DR)

W1-1R

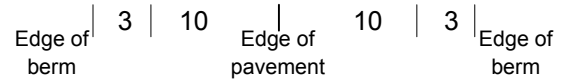
W1-1L

R2-1-35

R1-2

CR 309 (FAIRVIEW RD)

CR 3 (NORTH RIVER RD)

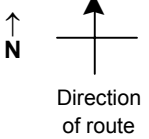


SPEED STUDY DATA SHEET

Date 10/04/06

County MUS

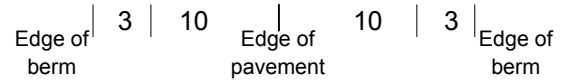
Municipality Muskingum County



Highway name & number 0150 (BELLVIEW DR)

Street classification STANDARD RURAL

Log point	* **		PHYSICAL CONDITION										* **		TRAFFIC CONTROL DEVICES			SPEED		ACCIDENTS	Test Runs
																		85%	PACE		
1.3																					
1.2																					
1.1																					
1.0																					
0.9																					
0.8																					
0.7																					

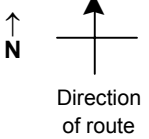


SPEED STUDY DATA SHEET

Date 10/04/06

County MUS

Municipality Muskingum County



Highway name & number 0150 (BELLVIEW DR)

Street classification STANDARD RURAL

Log point	*	**	PHYSICAL CONDITION										*	**	TRAFFIC CONTROL DEVICES				SPEED		ACCIDENTS	Test Runs			
															85%		PACE								
2.0																									
1.9																									
1.8																									
1.7																									
1.6																									
1.5																									
1.4			○			X	Y	CR 3 RICHVALE RD	+++++	X	Y			W10-1	T		T	R1-2							
														R2-1-35	T		T								
																		T							

