

SPEED STUDY DATA SHEET

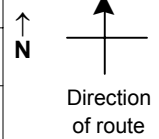
Date 10/03/06

County MUS

Municipality Muskingum County

Highway name & number 0155 (CHURCH HILL RD)

Street classification STANDARD RURAL



Log point	* **	PHYSICAL CONDITION						* **	TRAFFIC CONTROL DEVICES			SPEED		ACCIDENTS	Test Runs
												85%	PACE		
0.6							○								
0.5							○								
0.4							○								
0.3				∩	BEATTY CEMETERY RD										
0.2				∩	NO NAME RD										
0.1															
0.0				∩	CR 155 (PAINTERS HOLLOW RD)										

Edge of berm | 5 | 13 | Edge of pavement | 13 | 5 | Edge of berm

SPEED STUDY DATA SHEET

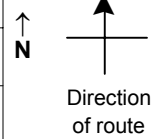
Date 10/03/06

County MUS

Municipality Muskingum County

Highway name & number 0155 (CHURCH HILL RD)

Street classification STANDARD RURAL



Log point	*	**	PHYSICAL CONDITION										*	**	TRAFFIC CONTROL DEVICES			SPEED		ACCIDENTS	Test Runs	
			85%	PACE	85%	PACE																
1.3																						
1.2																						
1.1																						
1.0																						
0.9																						
0.8																						
0.7																						

PRIVATE ROAD



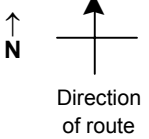
Edge of berm | 5 | 13 | Edge of pavement | 13 | 5 | Edge of berm

SPEED STUDY DATA SHEET

Date 10/03/06

County MUS

Municipality Muskingum County



Highway name & number 0155 (CHURCH HILL RD)

Street classification STANDARD RURAL

Log point	* **		PHYSICAL CONDITION										* **		TRAFFIC CONTROL DEVICES				SPEED		ACCIDENTS	Test Runs
															85%	PACE						
						∩	CR 40 (MOLLIES ROCK RD)	∩														
2.0																						
1.9																						
1.8																						
1.7						∩	CR 395 (OLD FERRY RD)															
1.6			○												S3-1	T						
1.5																						
1.4																						

Edge of berm | 5 | 13
Edge of pavement | 13 | 5
Edge of berm