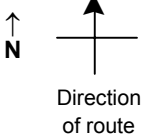


SPEED STUDY DATA SHEET

Date 10/03/06

County MUS

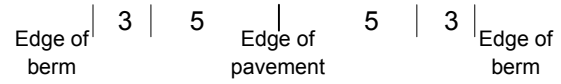
Municipality Muskingum County



Highway name & number 0164 (MADISON HALL RD)

Street classification STANDARD RURAL

Log point	* **		PHYSICAL CONDITION								* **		TRAFFIC CONTROL DEVICES				SPEED		ACCIDENTS	Test Runs
																	85%	PACE		
0.6																				
0.5																				
0.4																				
0.3																				
0.2			○																	
0.1					⌋				⌋			OM-3R	⌋		⌋	OM-3L				
					⌋				⌋			W5-3	⌋		⌋	OM-3R				
					⌋				⌋			OM-3L	⌋		⌋	OM-3R				
					⌋				⌋			W5-3	⌋		⌋					
0.0			○		⌋				⌋											
					⌋				⌋			OM-3R	⌋		⌋	OM-3L				
					⌋				⌋			OM-3L	⌋		⌋	OM-3R				
					⌋				⌋			R1-1	⌋		⌋	R1-1				



SPEED STUDY DATA SHEET

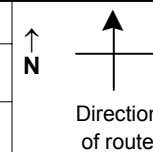
Date 10/03/06

County MUS

Municipality Muskingum County

Highway name & number 0164 (MADISON HALL RD)

Street classification STANDARD RURAL



Log point	*	**	PHYSICAL CONDITION								*	**	TRAFFIC CONTROL DEVICES				SPEED		ACCIDENTS	Test Runs
			85%		PACE															
1.3																				
1.2																				
1.1																				
1.0																				
0.9																				
0.8																				
0.7																				

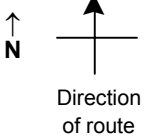
Edge of berm | 3 | 5 | Edge of pavement | 5 | 3 | Edge of berm

SPEED STUDY DATA SHEET

Date 10/03/06

County MUS

Municipality Muskingum County



Highway name & number 0164 (MADISON HALL RD)

Street classification STANDARD RURAL

Log point	*	**	PHYSICAL CONDITION						*	**	TRAFFIC CONTROL DEVICES			SPEED		ACCIDENTS	Test Runs
											OM-3R			OM-3L	OM-3R		
											OM-3R	OM-3L	OM-3R				
2.0																	
1.9																	
1.8																	
1.7																	
1.6																	
1.5																	
1.4																	



Edge of berm | 3 | 5 | Edge of pavement | 5 | 3 | Edge of berm

SPEED STUDY DATA SHEET

Date 10/03/06

County MUS

Municipality Muskingum County

↑
N



Direction
of route

Highway name & number 0164 (MADISON HALL RD)

Street classification STANDARD RURAL

Log point	*	**	PHYSICAL CONDITION										*	**	TRAFFIC CONTROL DEVICES				SPEED		ACCIDENTS	Test Runs	
			85%		PACE																		
2.7																							
2.6																							
2.5																							
2.4																							
2.3																							
2.2																							
2.1																							

Edge of berm | 3 | 5 | Edge of pavement | 5 | 3 | Edge of berm

SR 208

R1-1