

SPEED STUDY DATA SHEET

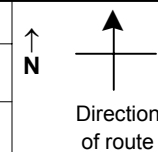
Date 10/03/06

County MUS

Municipality Muskingum County

Highway name & number 0199 (ZANE GREY RD)

Street classification STANDARD RURAL



Log point	* **		PHYSICAL CONDITION										* **		TRAFFIC CONTROL DEVICES				SPEED		ACCIDENTS	Test Runs				
																							85%	PACE		
1.3																										
1.2																										
1.1																	W-203	T								
1.0																	S3-1	T								
0.9																										
0.8																										
0.7																										

Edge of berm | 3 | 9 | Edge of pavement | 9 | 3 | Edge of berm

SPEED STUDY DATA SHEET

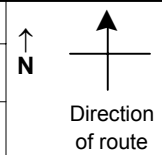
Date 10/03/06

County MUS

Municipality Muskingum County

Highway name & number 0199 (ZANE GREY RD)

Street classification STANDARD RURAL



Log point	*	**	PHYSICAL CONDITION						*	**	TRAFFIC CONTROL DEVICES			SPEED		ACCIDENTS	Test Runs
														85%	PACE		
2.0			○														
			○														
1.9			○														
1.8																	
1.7																	
1.6																	
1.5																	
1.4																	

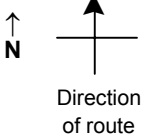
Edge of berm | 3 | 9
Edge of pavement | 9 | 3
Edge of berm

SPEED STUDY DATA SHEET

Date 10/03/06

County MUS

Municipality Muskingum County



Highway name & number 0199 (ZANE GREY RD)

Street classification STANDARD RURAL

Log point	*	**	PHYSICAL CONDITION										*	**	TRAFFIC CONTROL DEVICES			SPEED		ACCIDENTS	Test Runs		
																		85%	PACE				
2.7																							
2.6																							
2.5																							
2.4																							
2.3																							
2.2																							
2.1																							

TR 442 (E WHEELING RD)

TR 442 (ZANE TRACE RD)

Edge of berm | 3 | 9 | Edge of pavement | 9 | 3 | Edge of berm

