

SPEED STUDY DATA SHEET

Date 09/27/06

County MUS

Municipality Muskingum County

↑
N



Direction
of route

Highway name & number 0203 (YOKER RD)

Street classification STANDARD RURAL

Log point	* **		PHYSICAL CONDITION										* **		TRAFFIC CONTROL DEVICES				SPEED		ACCIDENTS	Test Runs
															85%	PACE						
0.6																						
0.5																						
0.4																						
0.3																						
0.2																						
0.1																						
0.0																						

Edge of berm | 3 | 7 | Edge of pavement | 7 | 3 | Edge of berm

SPEED STUDY DATA SHEET

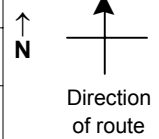
Date 09/27/06

County MUS

Municipality Muskingum County

Highway name & number 0203 (YOKER RD)

Street classification STANDARD RURAL



Log point	* **		PHYSICAL CONDITION										* **		TRAFFIC CONTROL DEVICES				SPEED		ACCIDENTS	Test Runs		
																	85%	PACE						
1.3																								
1.2																								
1.1																								
1.0																								
0.9																								
0.8														○										
0.7														○										

Edge of berm | 3 | 7 | Edge of pavement | 7 | 3 | Edge of berm

SPEED STUDY DATA SHEET

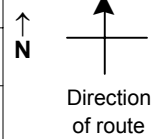
Date 09/27/06

County MUS

Municipality Muskingum County

Highway name & number 0203 (YOKER RD)

Street classification STANDARD RURAL



Log point	*	**	PHYSICAL CONDITION							*	**	TRAFFIC CONTROL DEVICES			SPEED		ACCIDENTS	Test Runs
2.0																		
1.9																		
1.8																		
1.7																		
1.6																		
1.5																		
1.4																		

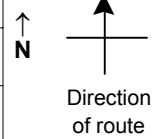
Edge of berm | 3 | 7 | Edge of pavement | 7 | 3 | Edge of berm

SPEED STUDY DATA SHEET

Date 09/27/06

County MUS

Municipality Muskingum County



Highway name & number 0203 (YOKER RD)

Street classification STANDARD RURAL

Log point	* **		PHYSICAL CONDITION								* **		TRAFFIC CONTROL DEVICES				SPEED		ACCIDENTS	Test Runs
																	85%	PACE		
2.7																				
2.6																				
2.5																				
2.4																				
2.3																				
2.2																				
2.1																				

TR 205 (CHIPMUNK RD) Y

Edge of berm | 3 | 7 | Edge of pavement | 7 | 3 | Edge of berm

SPEED STUDY DATA SHEET

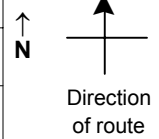
Date 09/27/06

County MUS

Municipality Muskingum County

Highway name & number 0203 (YOKER RD)

Street classification STANDARD RURAL



Log point	* **		PHYSICAL CONDITION										* **		TRAFFIC CONTROL DEVICES				SPEED		ACCIDENTS	Test Runs
			85%	PACE																		
3.4																						
3.3																						
3.2																						
3.1			∩		SR 313		∩								R1-1							
3.0																						
2.9																						
2.8																						

Edge of berm
3
7
Edge of pavement
7
3
Edge of berm