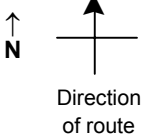


SPEED STUDY DATA SHEET

Date 09/26/06

County MUS

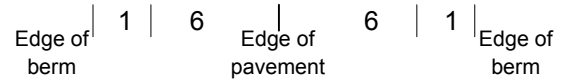
Municipality Muskingum County



Highway name & number 0223 (YOUNG HICKORY RD)

Street classification STANDARD RURAL

Log point	*	**	PHYSICAL CONDITION						*	**	TRAFFIC CONTROL DEVICES			SPEED		ACCIDENTS	Test Runs
														85%	PACE		
0.6																	
0.5																	
0.4			○														
0.3																	
0.2																	
0.1																	
0.0																	



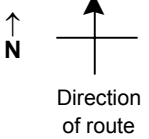
* MOR/MUS CO LINE *

SPEED STUDY DATA SHEET

Date 09/26/06

County MUS

Municipality Muskingum County



Highway name & number 0223 (YOUNG HICKORY RD)

Street classification STANDARD RURAL

Log point	*	**	PHYSICAL CONDITION						*	**	TRAFFIC CONTROL DEVICES			SPEED		ACCIDENTS	Test Runs
														85%	PACE		
1.3																	
1.2																	
1.1																	
1.0																	
0.9																	
0.8																	
0.7																	

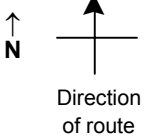
Edge of berm | 1 | 6
Edge of pavement | 6 | 1
Edge of berm

SPEED STUDY DATA SHEET

Date 09/26/06

County MUS

Municipality Muskingum County



Highway name & number 0223 (YOUNG HICKORY RD)

Street classification STANDARD RURAL

Log point	* **		PHYSICAL CONDITION						* **		TRAFFIC CONTROL DEVICES				SPEED		ACCIDENTS	Test Runs
															85%	PACE		
2.0																		
1.9			∩		SR 284		∩					▬ R1-1						
1.8																		
1.7																		
1.6																		
1.5																		
1.4																		

Edge of berm | 1 | 6
Edge of pavement | 6 | 1
Edge of berm