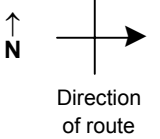


SPEED STUDY DATA SHEET

Date 09/26/06

County MUS

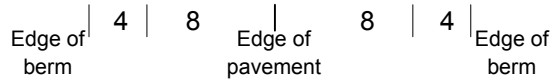
Municipality Muskingum County



Highway name & number 0226 (BLUE ROCK CHURCH RD)

Street classification STANDARD RURAL

Log point	*	**	PHYSICAL CONDITION						*	**	TRAFFIC CONTROL DEVICES			SPEED		ACCIDENTS	Test Runs
														85%	PACE		
3.7																	
3.6																	
3.5																	
3.4							○										
3.3			○														
3.2																	
3.1				∩				∩				T			T		



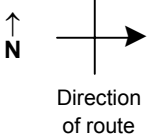
CR 45 (CUTLER LAKE RD)

SPEED STUDY DATA SHEET

Date 09/26/06

County MUS

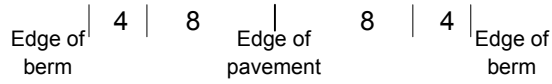
Municipality Muskingum County



Highway name & number 0226 (BLUE ROCK CHURCH RD)

Street classification STANDARD RURAL

Log point	*	**	PHYSICAL CONDITION						*	**	TRAFFIC CONTROL DEVICES			SPEED		ACCIDENTS	Test Runs
														85%	PACE		
4.4																	
4.3																	
4.2			> <														
4.1							○										
4.0																	
3.9																	
3.8							○										

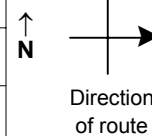


SPEED STUDY DATA SHEET

Date 09/26/06

County MUS

Municipality Muskingum County



Highway name & number 0226 (BLUE ROCK CHURCH RD)

Street classification STANDARD RURAL

Log point	*	**	PHYSICAL CONDITION						*	**	TRAFFIC CONTROL DEVICES			SPEED		ACCIDENTS	Test Runs
														85%	PACE		
5.1																	
5.0																	
4.9																	
4.8																	
4.7																	
4.6																	
4.5																	

Edge of berm | 4 | 8 | Edge of pavement | 8 | 4 | Edge of berm

SPEED STUDY DATA SHEET

Date 09/26/06

County MUS

Municipality Muskingum County



Highway name & number 0226 (BLUE ROCK CHURCH RD)

Street classification STANDARD RURAL

Log point	*	**	PHYSICAL CONDITION								*	**	TRAFFIC CONTROL DEVICES				SPEED		ACCIDENTS	Test Runs
			85%		PACE															
5.8																				
5.7																				
5.6																				
5.5																				
5.4																				
5.3																				
5.2																				

∩ TR 233 (FENTON RD) ∩

|
|
|
|
|
|
|

Edge of berm | 4 | 8 | Edge of pavement | 8 | 4 | Edge of berm