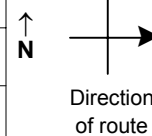


SPEED STUDY DATA SHEET

Date 09/26/06

County MUS

Municipality Muskingum County



Highway name & number 0226 (BUTTERMILK RD)

Street classification STANDARD RURAL

Log point	* **		PHYSICAL CONDITION						* **		TRAFFIC CONTROL DEVICES				SPEED		ACCIDENTS	Test Runs
															85%	PACE		
0.6																		
0.5										W5-3	T							
0.4										OM-3R	T							
0.3										OM-3L	T							
0.2																		
0.1																		
0.0																		
										R1-1	T							

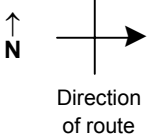
Edge of berm | 3 | 11 | Edge of pavement | 11 | 3 | Edge of berm

SPEED STUDY DATA SHEET

Date 09/26/06

County MUS

Municipality Muskingum County



Highway name & number 0226 (BUTTERMILK RD)

Street classification STANDARD RURAL

Log point	*	**	PHYSICAL CONDITION										*	**	TRAFFIC CONTROL DEVICES			SPEED		ACCIDENTS	Test Runs	
			85%		PACE																	
1.3																						
1.2																						
1.1																						
1.0																						
0.9																						
0.8																						
0.7																						

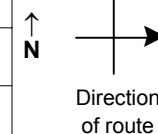
Edge of berm | 3 | 11 | Edge of pavement | 11 | 3 | Edge of berm

SPEED STUDY DATA SHEET

Date 09/26/06

County MUS

Municipality Muskingum County



Highway name & number 0226 (BUTTERMILK RD)

Street classification STANDARD RURAL

Log point	*	**	PHYSICAL CONDITION								*	**	TRAFFIC CONTROL DEVICES			SPEED		ACCIDENTS	Test Runs
			85%		PACE														
2.0																			
1.9																			
1.8																			
1.7																			
1.6																			
1.5																			
1.4																			

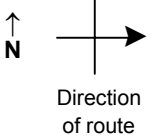
Edge of berm | 3 | 11 | Edge of pavement | 11 | 3 | Edge of berm

SPEED STUDY DATA SHEET

Date 09/26/06

County MUS

Municipality Muskingum County



Highway name & number 0226 (BUTTERMILK RD)

Street classification STANDARD RURAL

Log point	* **		PHYSICAL CONDITION										* **		TRAFFIC CONTROL DEVICES				SPEED		ACCIDENTS	Test Runs			
2.7																									
2.6																									
2.5																									
2.4			○																						
2.3																									
2.2																									
2.1																									

W1-2L

Edge of berm | 3 | 11 | Edge of pavement | 11 | 3 | Edge of berm

SPEED STUDY DATA SHEET

Date 09/26/06

County MUS

Municipality Muskingum County



Highway name & number 0226 (BUTTERMILK RD)

Street classification STANDARD RURAL

Direction of route

Log point	*	**	PHYSICAL CONDITION								*	**	TRAFFIC CONTROL DEVICES				SPEED		ACCIDENTS	Test Runs
			85%	PACE																
3.4																				
3.3																				
3.2																				
3.1												R1-1	┬	┆	┬	R1-1				
3.0														┆						
2.9														┆						
2.8														┆						

Edge of berm | 3 | 11 | Edge of pavement | 11 | 3 | Edge of berm