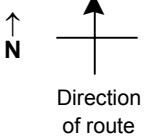


# SPEED STUDY DATA SHEET

Date 10/02/06

County MUS

Municipality Muskingum County

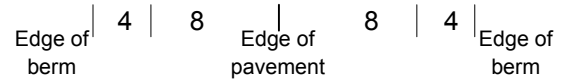


Highway name & number 0229 (GAYSPORT HILL RD)

Street classification STANDARD RURAL

Log point	*	**	PHYSICAL CONDITION								*	**	TRAFFIC CONTROL DEVICES			SPEED		ACCIDENTS	Test Runs
																85%	PACE		
0.6																			
0.5																			
0.4																			
0.3																			
0.2																			
0.1																			
0.0																			

\* MOR/MUS CO LINE \*



# SPEED STUDY DATA SHEET

Date 10/02/06

County MUS

Municipality Muskingum County

↑  
N



Direction  
of route

Highway name & number 0229 (GAYSPORT HILL RD)

Street classification STANDARD RURAL

Log point	*	**	PHYSICAL CONDITION								*	**	TRAFFIC CONTROL DEVICES				SPEED		ACCIDENTS	Test Runs
															85%	PACE				
1.3												S3-4	T							
1.2																				
1.1																				
1.0																				
0.9																				
0.8																				
0.7																				

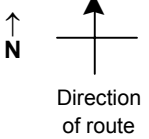
Edge of berm | 4 | 8 | Edge of pavement | 8 | 4 | Edge of berm

# SPEED STUDY DATA SHEET

Date 10/02/06

County MUS

Municipality Muskingum County



Highway name & number 0229 (GAYSPORT HILL RD)

Street classification STANDARD RURAL

Log point	* **		PHYSICAL CONDITION										* **		TRAFFIC CONTROL DEVICES				SPEED		ACCIDENTS	Test Runs			
																							85%	PACE	
2.0																									
1.9																									
1.8																									
1.7																									
1.6					*	BEGIN CR 466 (NO MARKING)						*													
1.5																									
1.4												○													

