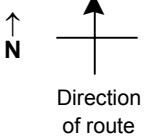


SPEED STUDY DATA SHEET

Date 09/26/06

County MUS

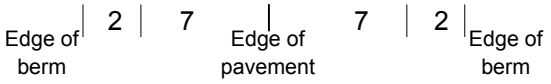
Municipality Muskingum County



Highway name & number 0231 (PEYTON RD)

Street classification STANDARD RURAL

Log point	*	**	PHYSICAL CONDITION										*	**	TRAFFIC CONTROL DEVICES			SPEED		ACCIDENTS	Test Runs	
															85%	PACE						
0.6																						
0.5																						
0.4																						
0.3																						
0.2																						
0.1																						
0.0																						

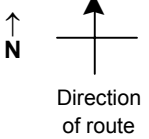


SPEED STUDY DATA SHEET

Date 09/26/06

County MUS

Municipality Muskingum County



Highway name & number 0231 (PEYTON RD)

Street classification STANDARD RURAL

Log point	*	**	PHYSICAL CONDITION							*	**	TRAFFIC CONTROL DEVICES			SPEED		ACCIDENTS	Test Runs
															85%	PACE		
1.3																		
1.2																		
1.1																		
1.0																		
0.9																		
0.8																		
0.7									○									

∩ TR 466 (ROBERTS RD)

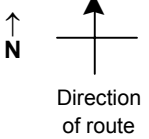
Edge of berm | 2 | 7 | Edge of pavement | 7 | 2 | Edge of berm

SPEED STUDY DATA SHEET

Date 09/26/06

County MUS

Municipality Muskingum County



Highway name & number 0231 (PEYTON RD)

Street classification STANDARD RURAL

Log point	*	**	PHYSICAL CONDITION							*	**	TRAFFIC CONTROL DEVICES			SPEED		ACCIDENTS	Test Runs
			85%	PACE	TRAFFIC CONTROL DEVICES		85%	PACE										
2.0																		
1.9																		
1.8																		
1.4																		

Edge of berm | 2 | 7
Edge of pavement | 7 | 2
Edge of berm