

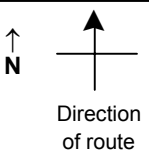


# SPEED STUDY DATA SHEET

Date 10/11/06

County MUS

Municipality Muskingum County



Highway name & number 0293 (COTTAGE HILL RD)

Street classification STANDARD RURAL

Log point	* **		PHYSICAL CONDITION												* **		TRAFFIC CONTROL DEVICES						SPEED		ACCIDENTS			Test Runs	
																	85%		PACE										
2.1																													
2.0																													
1.9																													
1.8																	                                     												
1.7																	                                     												
1.6																	                                     												
1.5																	                                     												

CR 8 (PERT HILL RD)  
CR 121 (CROWN RD)

S3-H2

