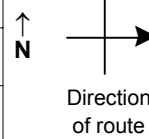


# SPEED STUDY DATA SHEET

Date 10/04/06

County MUS

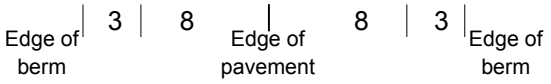
Municipality Muskingum County



Highway name & number 0313 (MT ZION RD)

Street classification STANDARD RURAL

Log point	* **		PHYSICAL CONDITION										* **		TRAFFIC CONTROL DEVICES				SPEED		ACCIDENTS	Test Runs
																			85%	PACE		
0.6																						
0.5																						
0.4																						
0.3																						
0.2																						
0.1																						
0.0																						



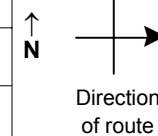
SPUR TO CR 48 (SCOUT RD)  
CR 48 (SCOUT RD)

# SPEED STUDY DATA SHEET

Date 10/04/06

County MUS

Municipality Muskingum County



Highway name & number 0313 (MT ZION RD)

Street classification STANDARD RURAL

Log point	*	**	PHYSICAL CONDITION						*	**	TRAFFIC CONTROL DEVICES			SPEED		ACCIDENTS	Test Runs	
1.3																		
1.2											R2-1-35	T						
1.1											W13-1-25	T		T	W13-1-25			
1.0								O			W1-5R	T		T	W1-5R			
0.9								O										
0.8								O										
0.7																		

Edge of berm | 3 | 8 | Edge of pavement | 8 | 3 | Edge of berm