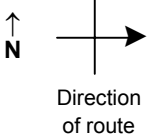


SPEED STUDY DATA SHEET

Date 10/03/06

County MUS

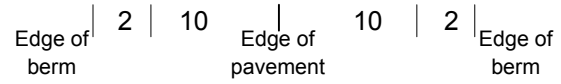
Municipality Muskingum County



Highway name & number 0363 (DEERFIELD RD)

Street classification STANDARD RURAL

Log point	*	**	PHYSICAL CONDITION						*	**	TRAFFIC CONTROL DEVICES			SPEED		ACCIDENTS	Test Runs
														85%	PACE		
2.0																	
1.9																	
1.8																	
1.7																	
1.6																	
1.5																	
1.4																	

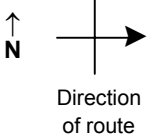


SPEED STUDY DATA SHEET

Date 10/03/06

County MUS

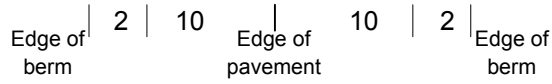
Municipality Muskingum County



Highway name & number 0363 (DEERFIELD RD)

Street classification STANDARD RURAL

Log point	*	**	PHYSICAL CONDITION						*	**	TRAFFIC CONTROL DEVICES			SPEED		ACCIDENTS	Test Runs
														85%	PACE		
2.7																	
2.6																	
2.5																	
2.4																	
2.3																	
2.2																	
2.1																	

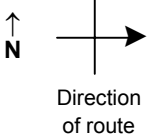


SPEED STUDY DATA SHEET

Date 10/03/06

County MUS

Municipality Muskingum County



Highway name & number 0363 (DEERFIELD RD)

Street classification STANDARD RURAL

Log point	*	**	PHYSICAL CONDITION								*	**	TRAFFIC CONTROL DEVICES				SPEED		ACCIDENTS	Test Runs
			85%		PACE															
3.4																				
3.3																				
3.2																				
3.1																				
3.0																				
2.9																				
2.8																				

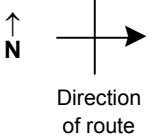
Edge of berm | 2 | 10 | Edge of pavement | 10 | 2 | Edge of berm

SPEED STUDY DATA SHEET

Date 10/03/06

County MUS

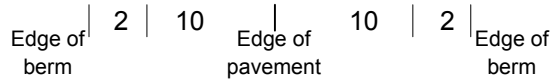
Municipality Muskingum County



Highway name & number 0363 (DEERFIELD RD)

Street classification STANDARD RURAL

Log point	*	**	PHYSICAL CONDITION						*	**	TRAFFIC CONTROL DEVICES			SPEED		ACCIDENTS	Test Runs
														85%	PACE		
4.1																	
4.0																	
3.9																	
3.8																	
3.7																	
3.6																	
3.5																	

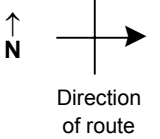


SPEED STUDY DATA SHEET

Date 10/03/06

County MUS

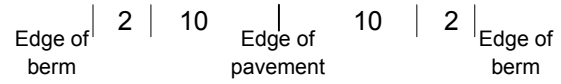
Municipality Muskingum County



Highway name & number 0363 (DEERFIELD RD)

Street classification STANDARD RURAL

Log point	*	**	PHYSICAL CONDITION						*	**	TRAFFIC CONTROL DEVICES			SPEED		ACCIDENTS	Test Runs
														85%	PACE		
4.8																	
4.7																	
4.6																	
4.5																	
4.4																	
4.3																	
4.2																	



SPEED STUDY DATA SHEET

Date 10/03/06

County MUS

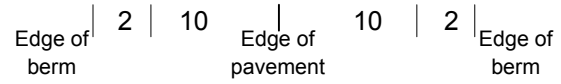
Municipality Muskingum County



Highway name & number 0363 (DEERFIELD RD)

Street classification STANDARD RURAL

Log point	*	**	PHYSICAL CONDITION								*	**	TRAFFIC CONTROL DEVICES				SPEED		ACCIDENTS	Test Runs
			85%		PACE															
5.5																				
5.4																				
5.3																				
5.2																				
5.1																				
5.0																				
4.9																				



SPEED STUDY DATA SHEET

Date 10/03/06

County MUS

Municipality Muskingum County

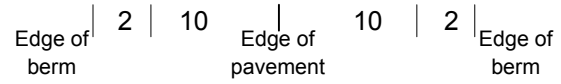


Highway name & number 0363 (DEERFIELD RD)

Street classification STANDARD RURAL

Direction of route

Log point	*	**	PHYSICAL CONDITION						*	**	TRAFFIC CONTROL DEVICES			SPEED		ACCIDENTS	Test Runs
															85%		
6.2																	
6.1																	
6.0																	
5.9																	
5.8																	
5.7																	
5.6																	



SPEED STUDY DATA SHEET

Date 10/03/06

County MUS

Municipality Muskingum County



Highway name & number 0363 (DEERFIELD RD)

Street classification STANDARD RURAL

Log point	*	**	PHYSICAL CONDITION						*	**	TRAFFIC CONTROL DEVICES			SPEED		ACCIDENTS	Test Runs
														85%	PACE		
6.9																	
6.8																	
6.7																	
6.6																	
6.5																	
6.4																	
6.3																	

Edge of berm | 2 | 10
Edge of pavement | 10 | 2
Edge of berm

SPEED STUDY DATA SHEET

Date 10/03/06

County MUS

Municipality Muskingum County



Highway name & number 0363 (DEERFIELD RD)

Street classification STANDARD RURAL

Direction of route

Log point	*	**	PHYSICAL CONDITION						*	**	TRAFFIC CONTROL DEVICES			SPEED		ACCIDENTS	Test Runs
														85%	PACE		
7.6																	
7.5																	
7.4																	
7.3																	
7.2																	
7.1																	
7.0																	

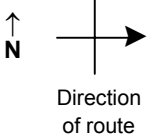
Edge of berm | 2 | 10 | Edge of pavement | 10 | 2 | Edge of berm

SPEED STUDY DATA SHEET

Date 10/03/06

County MUS

Municipality Muskingum County



Highway name & number 0363 (DEERFIELD RD)

Street classification STANDARD RURAL

Log point	*	**	PHYSICAL CONDITION						*	**	TRAFFIC CONTROL DEVICES			SPEED		ACCIDENTS	Test Runs
														85%	PACE		
8.3																	
8.2																	
8.1																	
8.0																	
7.9																	
7.8																	
7.7																	

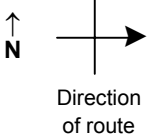
Edge of berm | 2 | 10 | Edge of pavement | 10 | 2 | Edge of berm

SPEED STUDY DATA SHEET

Date 10/03/06

County MUS

Municipality Muskingum County



Highway name & number 0363 (DEERFIELD RD)

Street classification STANDARD RURAL

Log point	*	**	PHYSICAL CONDITION						*	**	TRAFFIC CONTROL DEVICES			SPEED		ACCIDENTS	Test Runs
														85%	PACE		
9.0																	
8.9																	
8.8																	
8.7																	
8.6																	
8.5																	
8.4																	

Edge of berm | 2 | 10 | Edge of pavement | 10 | 2 | Edge of berm

SPEED STUDY DATA SHEET

Date 10/03/06

County MUS

Municipality Muskingum County



Highway name & number 0363 (DEERFIELD RD)

Street classification STANDARD RURAL

Log point	* **		PHYSICAL CONDITION										* **		TRAFFIC CONTROL DEVICES				SPEED		ACCIDENTS	Test Runs
																			85%	PACE		
9.7																						
9.6																						
9.5																						
9.4																						
9.3																						
9.2																						
9.1																						

○

|
|
|
|
|
|
|

Edge of berm | 2 | 10 | Edge of pavement | 10 | 2 | Edge of berm