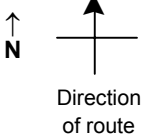


SPEED STUDY DATA SHEET

Date 09/28/06

County MUS

Municipality Muskingum County



Highway name & number 0408 (PLEASANT VALLEY RD)

Street classification STANDARD RURAL

Log point	*	**	PHYSICAL CONDITION					*	**	TRAFFIC CONTROL DEVICES			SPEED		ACCIDENTS	Test Runs
													85%	PACE		
4.4																
4.3										W13-1-25	T					
										W11-H13/truck	T					
4.2																
										W1-1L	T					
										W11-2	T					
										W1-2L	T					
4.1																
4.0																
3.9																
3.8																

Edge of berm | 3 | 11 | Edge of pavement | 11 | 3 | Edge of berm

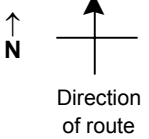
TR 47 (PLEASANT VALLEY CH)

SPEED STUDY DATA SHEET

Date 09/28/06

County MUS

Municipality Muskingum County



Highway name & number 0408 (PLEASANT VALLEY RD)

Street classification STANDARD RURAL

Log point	*	**	PHYSICAL CONDITION						*	**	TRAFFIC CONTROL DEVICES			SPEED		ACCIDENTS	Test Runs
														85%	PACE		
5.1																	
5.0																	
4.9																	
4.8																	
4.7													▬ W1-5L				
4.6																	
4.5																	

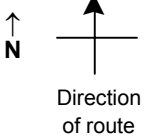
Edge of berm | 3 | 11
Edge of pavement | 11 | 3
Edge of berm

SPEED STUDY DATA SHEET

Date 09/28/06

County MUS

Municipality Muskingum County



Highway name & number 0408 (PLEASANT VALLEY RD)

Street classification STANDARD RURAL

Log point	* **		PHYSICAL CONDITION										* **		TRAFFIC CONTROL DEVICES				SPEED		ACCIDENTS	Test Runs				
																	85%	PACE								
5.8																	R2-5A	T			W1-5L					
5.7																					R2-1-50					
5.6																										
5.5																										
5.4																										
5.3																										
5.2																	W13-1-30	T			W1-5R					

TR 294 (HUNT RD)

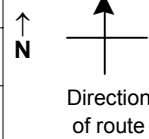
Edge of berm | 3 | 11 | Edge of pavement | 11 | 3 | Edge of berm

SPEED STUDY DATA SHEET

Date 09/28/06

County MUS

Municipality Muskingum County



Highway name & number 0408 (PLEASANT VALLEY RD)

Street classification STANDARD RURAL

Log point	* **		PHYSICAL CONDITION										* **		TRAFFIC CONTROL DEVICES				SPEED		ACCIDENTS	Test Runs
																			85%	PACE		
6.5																						
6.4																						
6.3																						
6.2																						
6.1																						
6.0																						
5.9																						

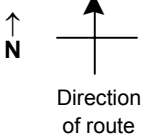
Edge of berm | 3 | 11 | Edge of pavement | 11 | 3 | Edge of berm

SPEED STUDY DATA SHEET

Date 09/28/06

County MUS

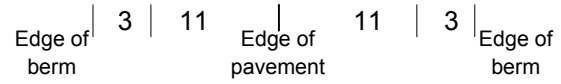
Municipality Muskingum County



Highway name & number 0408 (PLEASANT VALLEY RD)

Street classification STANDARD RURAL

Log point	* **		PHYSICAL CONDITION										* **		TRAFFIC CONTROL DEVICES				SPEED		ACCIDENTS	Test Runs					
																	85%	PACE									
7.2																											
7.1																											
7.0			Y CR 8 (COTTAGE HILL RD) TR 8 (BRAILER LN) Y																								
6.9																											
6.8																											
6.7																											
6.6																											

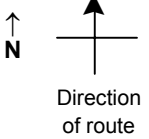


SPEED STUDY DATA SHEET

Date 09/28/06

County MUS

Municipality Muskingum County



Highway name & number 0408 (PLEASANT VALLEY RD)

Street classification STANDARD RURAL

Log point	* **		PHYSICAL CONDITION										* **		TRAFFIC CONTROL DEVICES				SPEED		ACCIDENTS	Test Runs			
																			85%	PACE					
7.9																	W1-2R	T			▲ W1-8				
																					▲ W1-8				
																					▲ W1-8				
																					▲ W1-8				
7.8																									
																					▲ W13-1-25				
																					▲ W1-5R				
7.7																									
7.6																	R2-1-50	T							
7.5																									
7.4																									
7.3																									

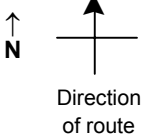
Edge of berm | 3 | 11 | Edge of pavement | 11 | 3 | Edge of berm

SPEED STUDY DATA SHEET

Date 09/28/06

County MUS

Municipality Muskingum County



Highway name & number 0408 (PLEASANT VALLEY RD)

Street classification STANDARD RURAL

Log point	* **		PHYSICAL CONDITION										* **		TRAFFIC CONTROL DEVICES				SPEED		ACCIDENTS	Test Runs
																			85%	PACE		
8.6																						
8.5			○																			
8.4																						
8.3			○																			
8.2			○																			
8.1			○																			
8.0			○																			

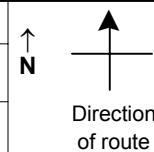
Edge of berm | 3 | 11 | Edge of pavement | 11 | 3 | Edge of berm

SPEED STUDY DATA SHEET

Date 09/28/06

County MUS

Municipality Muskingum County



Highway name & number 0408 (PLEASANT VALLEY RD)

Street classification STANDARD RURAL

Log point	* **		PHYSICAL CONDITION										* **		TRAFFIC CONTROL DEVICES					SPEED		ACCIDENTS	Test Runs	
																				85%	PACE			
9.3																								
9.2																								
9.1																								
9.0																								
8.9																								
8.8																								
8.7																								

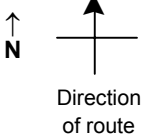
Edge of berm
3
11
Edge of pavement
11
3
Edge of berm

SPEED STUDY DATA SHEET

Date 09/28/06

County MUS

Municipality Muskingum County



Highway name & number 0408 (PLEASANT VALLEY RD)

Street classification STANDARD RURAL

Log point	* **		PHYSICAL CONDITION										* **		TRAFFIC CONTROL DEVICES					SPEED		ACCIDENTS	Test Runs
																				85%	PACE		
10.0			SR 146												R1-1								
9.9			● ○												R2-1-50								
9.8																							
9.7																							
9.6																							
9.5																							
9.4															W8-H22								

Edge of berm | 3 | 11 | Edge of pavement | 11 | 3 | Edge of berm