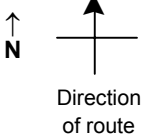


SPEED STUDY DATA SHEET

Date 10/04/06

County MUS

Municipality Muskingum County



Highway name & number 0416 (DRESDEN RD)

Street classification STANDARD RURAL

Log point	* **	PHYSICAL CONDITION						* **	TRAFFIC CONTROL DEVICES				SPEED		ACCIDENTS	Test Runs
									85%	PACE						
0.6																
0.5																
0.4																
0.3																
0.2																
0.1																
0.0																

CR 116 (MCGLADE SCHOOL RD)

R1-2

OM-3R
OM-3L

OM-3L
OM-3R

W5-3

W11-1

Edge of berm | 2 | 9 | Edge of pavement | 9 | 2 | Edge of berm

Sheet 1 of 1 sheets