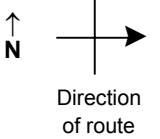


SPEED STUDY DATA SHEET

Date 09/26/06

County MUS

Municipality Muskingum County



Highway name & number 0427 (WILSON RD)

Street classification STANDARD RURAL

Log point	* **		PHYSICAL CONDITION										* **		TRAFFIC CONTROL DEVICES				SPEED		ACCIDENTS	Test Runs		
															85%	PACE								
0.6																								
0.5																								
0.4																								
0.3																								
0.2			TR 138 (JOHNSON HILL RD)																					
0.1																								
0.0			 SR 555												R12-1/16 Ton				OM-3L					
															OM-3R				OM-3R					
															OM-3L				R12-1/16 Ton					
															R1-1									

Edge of berm | 4 | 9 | Edge of pavement | 9 | 4 | Edge of berm

SPEED STUDY DATA SHEET

Date 09/26/06

County MUS

Municipality Muskingum County



Highway name & number 0427 (WILSON RD)

Street classification STANDARD RURAL

Direction of route

Log point	* **		PHYSICAL CONDITION										* **		TRAFFIC CONTROL DEVICES				SPEED		ACCIDENTS	Test Runs	
																	85%	PACE					
1.3																							
1.2																							
1.1																							
1.0																							
0.9																							
0.8																							
0.7																							

CR 66 (VIRGINIA RIDGE RD)

TR 78 (DOZER RIDGE RD)

R1-1

Edge of berm | 4 | 9 | Edge of pavement | 9 | 4 | Edge of berm

Sheet 2 of 2 sheets