

SPEED STUDY DATA SHEET

Date 10/03/06

County MUS

Municipality Muskingum County



Highway name & number 0430 (STONE CHURCH RD)

Street classification STANDARD RURAL

Direction of route

Log point	*	**	PHYSICAL CONDITION						*	**	TRAFFIC CONTROL DEVICES			SPEED		ACCIDENTS	Test Runs
														85%	PACE		
4.7																	
4.6																	
4.5																	
4.4																	
4.3																	
4.2																	
4.1																	

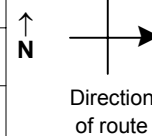
Edge of berm | 4 | 9 | Edge of pavement | 9 | 4 | Edge of berm

SPEED STUDY DATA SHEET

Date 10/03/06

County MUS

Municipality Muskingum County



Highway name & number 0430 (STONE CHURCH RD)

Street classification STANDARD RURAL

Log point	*	**	PHYSICAL CONDITION										*	**	TRAFFIC CONTROL DEVICES				SPEED		ACCIDENTS	Test Runs	
			85%		PACE																		
5.4																							
5.3																							
5.2																							
5.1																							
5.0																							
4.9																							
4.8																							

CR 14 (FERNCLIFF RD)

R1-1

Edge of berm | 4 | 9 | Edge of pavement | 9 | 4 | Edge of berm