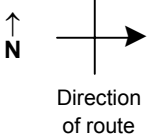


SPEED STUDY DATA SHEET

Date 10/02/06

County MUS

Municipality Muskingum County



Highway name & number 0449 (DIETZ LN)

Street classification STANDARD RURAL

Log point	* **		PHYSICAL CONDITION										* **		TRAFFIC CONTROL DEVICES				SPEED		ACCIDENTS	Test Runs		
																							85%	PACE
2.4																								
2.3																								
2.2			○																					
2.1			○																					
2.0			○																					
1.9			○																					
1.8			○																					

TR 449 (ELLERMAN RD)

W1-1L

R2-1-35

W13-1-20

W1-5L

W13-1-15

W1-5L

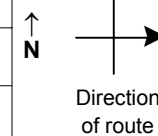
Edge of berm | 3 | 9 | Edge of pavement | 9 | 3 | Edge of berm

SPEED STUDY DATA SHEET

Date 10/02/06

County MUS

Municipality Muskingum County



Highway name & number 0449 (DIETZ LN)

Street classification STANDARD RURAL

Log point	* **	PHYSICAL CONDITION						* **	TRAFFIC CONTROL DEVICES				SPEED		ACCIDENTS	Test Runs
													85%	PACE		
3.1																
3.0																
2.9																
2.8																
2.7																
2.6																
2.5																

Edge of berm | 3 | 9 | Edge of pavement | 9 | 3 | Edge of berm

Sheet 3 of 7 sheets

SPEED STUDY DATA SHEET

Date 10/02/06

County MUS

Municipality Muskingum County



Highway name & number 0449 (DIETZ LN)

Street classification STANDARD RURAL

Direction of route

Log point	* **		PHYSICAL CONDITION										* **		TRAFFIC CONTROL DEVICES				SPEED		ACCIDENTS	Test Runs		
																	85%	PACE						
4.5																								
4.4																								
4.3																								
4.2															R2-1-35	T								
4.1																								
4.0																								
3.9																								

Edge of berm | 3 | 9 | Edge of pavement | 9 | 3 | Edge of berm

SPEED STUDY DATA SHEET

Date 10/02/06

County MUS

Municipality Muskingum County



Highway name & number 0449 (DIETZ LN)

Street classification STANDARD RURAL

Direction of route

Log point	* **		PHYSICAL CONDITION										* **		TRAFFIC CONTROL DEVICES				SPEED		ACCIDENTS	Test Runs
															85%	PACE						
5.9																						
5.8																						
5.7																						
5.6																						
5.5			○		∩	CR 73 (MILLERS LN)						∩		R2-1-35	┐		┐	R1-1				
5.4			○												W1-5R	┐						
5.3																						

Edge of berm | 3 | 9 | Edge of pavement | 9 | 3 | Edge of berm