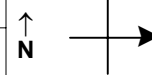


SPEED STUDY DATA SHEET

Date 09/26/06

County MUS

Municipality Muskingum County



Highway name & number 0452 (RIDGEVIEW RD)

Street classification STANDARD RURAL

Direction of route

Log point	*	**	PHYSICAL CONDITION						*	**	TRAFFIC CONTROL DEVICES			SPEED		ACCIDENTS	Test Runs
0.6																	
0.5																	
0.4																	
0.3																	
0.2												o o o o o					
0.1																	
0.0													┌ R1-2				
													└ R1-2				

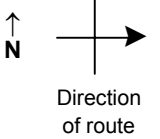
Edge of berm | 3 | 8 | Edge of pavement | 8 | 3 | Edge of berm

SPEED STUDY DATA SHEET

Date 09/26/06

County MUS

Municipality Muskingum County



Highway name & number 0452 (RIDGEVIEW RD)

Street classification STANDARD RURAL

Log point	*	**	PHYSICAL CONDITION										*	**	TRAFFIC CONTROL DEVICES			SPEED		ACCIDENTS	Test Runs		
																		85%	PACE				
1.3																							
1.2																							
1.1																							
1.0																							
0.9																							
0.8																							
0.7																							

TR 685 (OLIVE RD)

SPUR TO TR 233 (FENTON RD)
TR 233 (FENTON RD)

Edge of berm | 3 | 8 | Edge of pavement | 8 | 3 | Edge of berm

SPEED STUDY DATA SHEET

Date 09/26/06

County MUS

Municipality Muskingum County



Highway name & number 0452 (RIDGEVIEW RD)

Street classification STANDARD RURAL

Direction of route

Log point	*	**	PHYSICAL CONDITION										*	**	TRAFFIC CONTROL DEVICES				SPEED		ACCIDENTS	Test Runs	
			85%		PACE																		
2.0																							
1.9																							
1.8																							
1.7																							
1.6																							
1.5																							
1.4																							

CR 97 (SUGARGROVE RD)

Edge of berm | 3 | 8 | Edge of pavement | 8 | 3 | Edge of berm