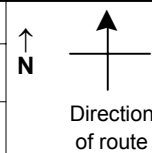


SPEED STUDY DATA SHEET

Date 10/02/06

County MUS

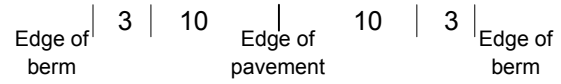
Municipality Muskingum County



Highway name & number 0483 (LUTZ LN)

Street classification STANDARD RURAL

Log point	* **	PHYSICAL CONDITION										* **	TRAFFIC CONTROL DEVICES				SPEED		ACCIDENTS	Test Runs		
																	85%	PACE				
0.6											○		W13-1-15	┐								
											○		W1-3L	┐								
0.5											○			┐								
											○			┐								
0.4											○			┐								
											○			┐								
0.3											○			┐								
											○			┐								
0.2											○			┐								
											○		W13-1-20	┐								
0.1											○		W1-5L	┐								
											○			┐								
0.0											○		R1-1	┐								
											○			┐								



CR 72 (N DIETZ RD)

SPEED STUDY DATA SHEET

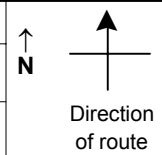
Date 10/02/06

County MUS

Municipality Muskingum County

Highway name & number 0483 (LUTZ LN)

Street classification STANDARD RURAL



Log point	*	**	PHYSICAL CONDITION							*	**	TRAFFIC CONTROL DEVICES			SPEED		ACCIDENTS	Test Runs
			85%	PACE	Edge of berm 3 10 Edge of pavement 10 3 Edge of berm			DOWNWARD RD										
1.3																		
1.2																		
1.1																		
1.0																		
0.9																		
0.8																		
0.7																		

Edge of berm | 3 | 10 | Edge of pavement | 10 | 3 | Edge of berm