

SPEED STUDY DATA SHEET

Date 09/28/06

County MUS

Municipality Muskingum County

↑
N

↑
Direction
of route

Highway name & number 0545 (VICKERS HILL RD)

Street classification STANDARD RURAL

Log point	*	**	PHYSICAL CONDITION						*	**	TRAFFIC CONTROL DEVICES			SPEED		ACCIDENTS	Test Runs
			85%	PACE	85%	PACE	W1-2L	W1-2R			85%	PACE					
0.6																	
0.5											W1-2L	T					
0.4																	
0.3													W1-2R				
0.2																	
0.1																	
0.0											R1-1	T	o.o.o.o				

Edge of berm
4 | 8
Edge of pavement
8 | 4
Edge of berm

SPEED STUDY DATA SHEET

Date 09/28/06

County MUS

Municipality Muskingum County

↑
N



Direction
of route

Highway name & number 0545 (VICKERS HILL RD)

Street classification STANDARD RURAL

Log point	* **		PHYSICAL CONDITION						* **		TRAFFIC CONTROL DEVICES			SPEED		ACCIDENTS	Test Runs
													85%	PACE			
1.3																	
1.2																	
1.1																	
1.0																	
0.9																	
0.8																	
0.7																	

TR 120 (GAUSE RD) Y

W1-8 T
W1-8 T

Edge of berm | 4 | 8 | Edge of pavement | 8 | 4 | Edge of berm

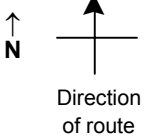
Sheet 2 of 6 sheets

SPEED STUDY DATA SHEET

Date 09/28/06

County MUS

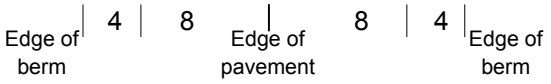
Municipality Muskingum County



Highway name & number 0545 (VICKERS HILL RD)

Street classification STANDARD RURAL

Log point	* **		PHYSICAL CONDITION										* **		TRAFFIC CONTROL DEVICES				SPEED		ACCIDENTS	Test Runs
																			85%	PACE		
2.0																						
1.9															W-203	T						
1.8																						
1.7																	S3-4					
1.6																						
1.5																						
1.4															W1-2R	T						

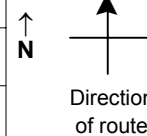


SPEED STUDY DATA SHEET

Date 09/28/06

County MUS

Municipality Muskingum County



Highway name & number 0545 (VICKERS HILL RD)

Street classification STANDARD RURAL

Log point	*	**	PHYSICAL CONDITION								*	**	TRAFFIC CONTROL DEVICES				SPEED		ACCIDENTS	Test Runs
			85%		PACE															
2.7																				
2.6			○																	
2.5																				
2.4																				
2.3																				
2.2																				
2.1																				

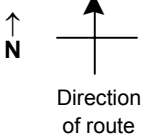
Edge of berm
4
8
Edge of pavement
8
4
Edge of berm

SPEED STUDY DATA SHEET

Date 09/28/06

County MUS

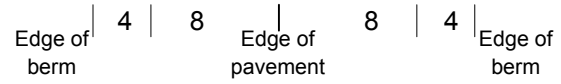
Municipality Muskingum County



Highway name & number 0545 (VICKERS HILL RD)

Street classification STANDARD RURAL

Log point	* **		PHYSICAL CONDITION										* **		TRAFFIC CONTROL DEVICES				SPEED		ACCIDENTS	Test Runs	
																	85%	PACE					
3.4																							
3.3																							
3.2																							
3.1																							
3.0																							
2.9																							
2.8																							

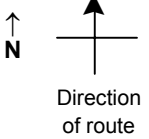


SPEED STUDY DATA SHEET

Date 09/28/06

County MUS

Municipality Muskingum County



Highway name & number 0545 (VICKERS HILL RD)

Street classification STANDARD RURAL

Log point	* **		PHYSICAL CONDITION										* **		TRAFFIC CONTROL DEVICES				SPEED		ACCIDENTS	Test Runs	
																	85%	PACE					
4.1																							
4.0																							
3.9																							
3.8																							
3.7			○			∩	CR 8 (CANAL RD)	∩					○				R1-1						
3.6																							
3.5																							

Edge of berm | 4 | 8 | Edge of pavement | 8 | 4 | Edge of berm