





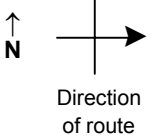


# SPEED STUDY DATA SHEET

Date 10/04/06

County MUS

Municipality Muskingum County



Highway name & number 0616 (RAIDERS RD)

Street classification STANDARD RURAL

Log point	* **		PHYSICAL CONDITION						* **		TRAFFIC CONTROL DEVICES				SPEED		ACCIDENTS	Test Runs
															85%	PACE		
				*	FRAZEYSBURG WCL	*					R2-1-55	T		I-H2A				
2.7											D2-2	T						
2.6																		
2.5											W2-2	T						
2.4				Y	CR 38 (HAMBY HILL RD)	Y												
2.3																		
2.2																		
2.1											W2-2	T						

Edge of berm | 9 | 13 | Edge of pavement | 13 | 9 | Edge of berm

# SPEED STUDY DATA SHEET

Date 10/04/06

County MUS

Municipality Muskingum County



Highway name & number 0616 (RAIDERS RD)

Street classification STANDARD RURAL

Log point	* **		PHYSICAL CONDITION								* **		TRAFFIC CONTROL DEVICES				SPEED		ACCIDENTS	Test Runs
																	85%	PACE		
3.4																				
3.3																				
3.2																				
3.1																				
3.0																				
2.9																				
2.8																				

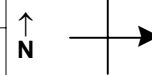
Edge of berm | 9 | 13 | Edge of pavement | 13 | 9 | Edge of berm

# SPEED STUDY DATA SHEET

Date 10/04/06

County MUS

Municipality Muskingum County



Highway name & number 0616 (RAIDERS RD)

Street classification STANDARD RURAL

Direction of route

Log point	* **		PHYSICAL CONDITION										* **		TRAFFIC CONTROL DEVICES					SPEED		ACCIDENTS		Test Runs			
4.1																											
4.0																											
3.9																											
3.8																											
3.7																											
3.6																											
3.5																											

\* RESUME \*  
\* FRAZEYSBURG ECL \*



LEAVE CORP  
R2-1-55

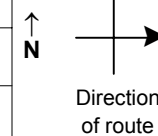
Edge of berm | 9 | 13 | Edge of pavement | 13 | 9 | Edge of berm

# SPEED STUDY DATA SHEET

Date 10/04/06

County MUS

Municipality Muskingum County



Highway name & number 0616 (RAIDERS RD)

Street classification STANDARD RURAL

Log point	* **	PHYSICAL CONDITION						* **	TRAFFIC CONTROL DEVICES				SPEED		ACCIDENTS	Test Runs
													85%	PACE		
4.8																
4.7																
4.6																
4.5																
4.4																
4.3																
4.2																

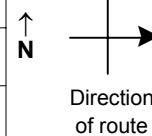
Edge of berm | 9 | 13 | Edge of pavement | 13 | 9 | Edge of berm

# SPEED STUDY DATA SHEET

Date 10/04/06

County MUS

Municipality Muskingum County



Highway name & number 0616 (RAIDERS RD)

Street classification STANDARD RURAL

Log point	* **	PHYSICAL CONDITION						* **	TRAFFIC CONTROL DEVICES			SPEED		ACCIDENTS	Test Runs
												85%	PACE		
5.5															
5.4															
5.3															
5.2															
5.1															
5.0															
4.9															

CR 301 (MOORE RD) Y



Edge of berm | 9 | 13 | Edge of pavement | 13 | 9 | Edge of berm

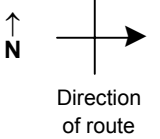


# SPEED STUDY DATA SHEET

Date 10/04/06

County MUS

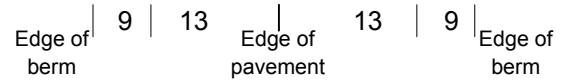
Municipality Muskingum County



Highway name & number 0616 (RAIDERS RD)

Street classification STANDARD RURAL

Log point	* **		PHYSICAL CONDITION										* **		TRAFFIC CONTROL DEVICES				SPEED		ACCIDENTS		Test Runs
															85%	PACE							
6.2																							
6.1																							
6.0																							
5.9																							
5.8			LONGABERGER HOMESTEAD																				
5.7																							
5.6																							

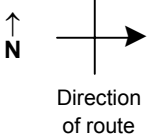


# SPEED STUDY DATA SHEET

Date 10/04/06

County MUS

Municipality Muskingum County



Highway name & number 0616 (RAIDERS RD)

Street classification STANDARD RURAL

Log point	* **			PHYSICAL CONDITION										* **			TRAFFIC CONTROL DEVICES				SPEED		ACCIDENTS	Test Runs
				85%	PACE																			
6.9				TR 118 (SCHOOL HOUSE RD)													●●●●●		●●●●●					
6.8																								
6.7														○										
6.6																	●●●●●		●●●●●					
6.5																								
6.4																	T							
6.3				LONGABERGER COMPANY													T							

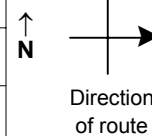
Edge of berm | 9 | 13 | Edge of pavement | 13 | 9 | Edge of berm

# SPEED STUDY DATA SHEET

Date 10/04/06

County MUS

Municipality Muskingum County



Highway name & number 0616 (RAIDERS RD)

Street classification STANDARD RURAL

Log point	* **		PHYSICAL CONDITION										* **		TRAFFIC CONTROL DEVICES				SPEED		ACCIDENTS	Test Runs		
																	85%	PACE						
7.6																								
7.5																								
7.4																								
7.3																								
7.2																								
7.1																								
7.0																								

TR 721 (SHORT RD) Y

oooo

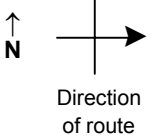
Edge of berm | 9 | 13 | Edge of pavement | 13 | 9 | Edge of berm

# SPEED STUDY DATA SHEET

Date 10/04/06

County MUS

Municipality Muskingum County



Highway name & number 0616 (RAIDERS RD)

Street classification STANDARD RURAL

Log point	*	**	PHYSICAL CONDITION						*	**	TRAFFIC CONTROL DEVICES			SPEED		ACCIDENTS	Test Runs
														85%	PACE		
8.3																	
8.2																	
8.1																	
8.0																	
7.9																	
7.8																	
7.7																	

TR 721 (SHORT RD)      Y

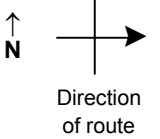
Edge of berm | 9 | 13 | Edge of pavement | 13 | 9 | Edge of berm

# SPEED STUDY DATA SHEET

Date 10/04/06

County MUS

Municipality Muskingum County



Highway name & number 0616 (RAIDERS RD)

Street classification STANDARD RURAL

Log point	* **		PHYSICAL CONDITION										* **		TRAFFIC CONTROL DEVICES					SPEED		ACCIDENTS	Test Runs								
																				85%	PACE										
9.0																															
8.9																															
8.8																															
8.7																															
8.6																															
8.5																															
8.4																															

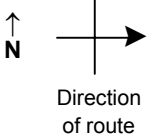
Edge of berm | 9 | 13 | Edge of pavement | 13 | 9 | Edge of berm

# SPEED STUDY DATA SHEET

Date 10/04/06

County MUS

Municipality Muskingum County



Highway name & number 0616 (RAIDERS RD)

Street classification STANDARD RURAL

Log point	* **	PHYSICAL CONDITION						* **	TRAFFIC CONTROL DEVICES			SPEED		ACCIDENTS	Test Runs
												85%	PACE		
9.7										S3-1					
9.6										S3-1					
9.5		●								W2-2 W11-H13/truck					
9.4		● ○								W3-3 M1-5-2 M2-1					
9.3										R2-1-55					
9.2										R3-H8BP					
9.1										R3-H8BH R3-H8BK					

CR 57 (BOTTOM RD)

SR 60

Edge of berm | 9 | 13 | Edge of pavement | 13 | 9 | Edge of berm

# SPEED STUDY DATA SHEET

Date 10/04/06

County MUS

Municipality Muskingum County



Highway name & number 0616 (RAIDERS RD)

Street classification STANDARD RURAL

Direction of route

Log point	*	**	PHYSICAL CONDITION										*	**	TRAFFIC CONTROL DEVICES			SPEED		ACCIDENTS	Test Runs	
			85%	PACE																		
10.4																						
10.3																						
10.2																						
10.1																						
10.0																						
9.9																S3-1	T	I				
9.8																W2-2	T	I				
																W11-H13/truck	T	I				

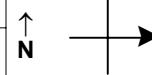
Edge of berm | 9 | 13 | Edge of pavement | 13 | 9 | Edge of berm

# SPEED STUDY DATA SHEET

Date 10/04/06

County MUS

Municipality Muskingum County



Highway name & number 0616 (RAIDERS RD)

Street classification STANDARD RURAL

Direction of route

Log point	*	**	PHYSICAL CONDITION						*	**	TRAFFIC CONTROL DEVICES			SPEED		ACCIDENTS	Test Runs
			85%	PACE	W	R	S	T			S	T					
11.1																	
11.0																	
10.9																	
10.8																	
10.7																	
10.6					CR 706 (N DRESDEN RD)					W1-8	┐						
										R1-1	┐						
										W1-8	┐						
										W1-8	┐						
										W3-1	┐						
10.5																	

Edge of berm
9
|
13
Edge of pavement
13
|
9
Edge of berm