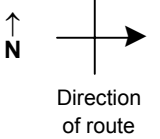


SPEED STUDY DATA SHEET

Date 09/26/06

County MUS

Municipality Muskingum County



Highway name & number 0652 (OLD TOWN RD)

Street classification STANDARD RURAL

Log point	*	**	PHYSICAL CONDITION						*	**	TRAFFIC CONTROL DEVICES			SPEED		ACCIDENTS	Test Runs
														85%	PACE		
0.6																	
0.5																	
0.4																	
0.3																	
0.2																	
0.1																	
0.0																	

Edge of berm | 5 | 9 | Edge of pavement | 9 | 5 | Edge of berm

SPEED STUDY DATA SHEET

Date 09/26/06

County MUS

Municipality Muskingum County



Highway name & number 0652 (OLD TOWN RD)

Street classification STANDARD RURAL

Direction of route

Log point	* **		PHYSICAL CONDITION					* **		TRAFFIC CONTROL DEVICES			SPEED		ACCIDENTS	Test Runs
												85%	PACE			
1.3																
1.2																
1.1																
1.0																
0.9																
0.8																
0.7																

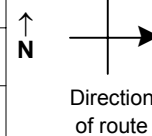
Edge of berm | 5 | 9 | Edge of pavement | 9 | 5 | Edge of berm

SPEED STUDY DATA SHEET

Date 09/26/06

County MUS

Municipality Muskingum County



Highway name & number 0652 (OLD TOWN RD)

Street classification STANDARD RURAL

Log point	*	**	PHYSICAL CONDITION						*	**	TRAFFIC CONTROL DEVICES				SPEED		ACCIDENTS	Test Runs
															85%	PACE		
2.7																		
2.6																		
2.5																		
2.4																		
2.3																		
2.2			∪		US 22		∪					▬	R1-1					
2.1													▬	W13-1-10				

Edge of berm
5 | 9
Edge of pavement
9 | 5
Edge of berm