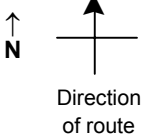


SPEED STUDY DATA SHEET

Date 10/10/06

County MUS

Municipality Muskingum County



Highway name & number 0660 (DILLON SCHOOL DR)

Street classification STANDARD RURAL

Log point	* **		PHYSICAL CONDITION					* **		TRAFFIC CONTROL DEVICES			SPEED		ACCIDENTS	Test Runs	
												85%	PACE				
0.6																	
0.5																	
0.4				∩	SR 146		∩										
0.3				∩	PARRY LANE												
0.2			●														
0.1			●	∩	CR 144 (DILLON FALLS RD)												
0.0			●	∩	FALLS LANE												
				∩	SR 146		∩										

Edge of berm | 2 | 9 | Edge of pavement | 9 | 2 | Edge of berm