

SPEED STUDY DATA SHEET

 Date 10/02/06

 County MUS

 Municipality Muskingum County

 ↑
N


Direction
of route

 Highway name & number 0683 (JOHN GLENN SCHOOL RD)

 Street classification STANDARD RURAL

Log point	* **		PHYSICAL CONDITION			* **		TRAFFIC CONTROL DEVICES		SPEED		ACCIDENTS	Test Runs
			85%	PACE									
0.6			*	SCHOOL DISTRICT CENTER				W11-2	T	—			
			*	BASEBALL DIAMOND POOL ENTRANCE	V					T	W11-2		
0.5													
0.4													
0.3													
0.2													
0.1													
0.0													
			V	SR 83	V			R1-1	T				

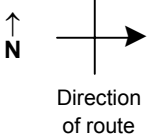
Edge of berm | 2 | 9 | Edge of pavement | 9 | 2 | Edge of berm

SPEED STUDY DATA SHEET

Date 10/02/06

County MUS

Municipality Muskingum County



Highway name & number 0683 (JOHN GLENN SCHOOL RD)

Street classification STANDARD RURAL

Log point	*	**	PHYSICAL CONDITION						*	**	TRAFFIC CONTROL DEVICES			SPEED		ACCIDENTS	Test Runs
														85%	PACE		
1.3																	
1.2																	
1.1																	
1.0																	
0.9																	
0.8																	
0.7											S4-3 S1-1	↑ ↑	↓				
													↑ R1-1				

