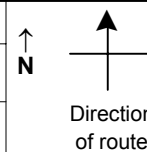


# SPEED STUDY DATA SHEET

Date 09/26/06

County MUS

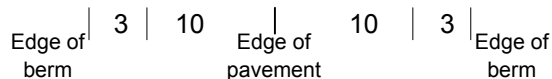
Municipality Muskingum County



Highway name & number 0696 (ROSEHILL RD)

Street classification STANDARD RURAL

Log point	* **	PHYSICAL CONDITION										* **	TRAFFIC CONTROL DEVICES			SPEED		ACCIDENTS	Test Runs
																85%	PACE		
0.6																			
0.5																			
0.4																			
0.3																			
0.2																			
0.1																			
0.0																			



# SPEED STUDY DATA SHEET

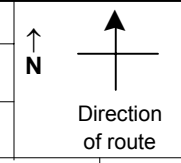
Date 09/26/06

County MUS

Municipality Muskingum County

Highway name & number 0696 (ROSEHILL RD)

Street classification STANDARD RURAL



Log point	* **	PHYSICAL CONDITION										* **	TRAFFIC CONTROL DEVICES					SPEED		ACCIDENTS	Test Runs
		Edge of berm		Edge of pavement		Edge of berm		85%	PACE												
1.3		○																			
1.2																					
1.1		○																			
1.0		○																			
0.9		○																			
0.8		○																			
0.7		○									●	R1-1	┐								
												R2-1-35	┐								

T129

Y

T88 (PACE RD)

R2-1-35

R2-1-35

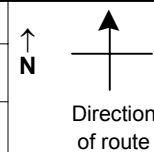
W13-1-10

Edge of berm | 3 | 10 | Edge of pavement | 10 | 3 | Edge of berm

# SPEED STUDY DATA SHEET

 Date 09/26/06

 County MUS

 Municipality Muskingum County

 Highway name & number 0696 (ROSEHILL RD)

 Street classification STANDARD RURAL

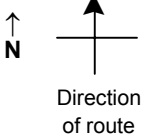
Log point	* **		PHYSICAL CONDITION						* **		TRAFFIC CONTROL DEVICES			SPEED		ACCIDENTS	Test Runs	
														85%	PACE			
2.0																		
1.9																		
1.8																		
1.7																		
1.6																		
1.5																		
1.4																		

Edge of berm	3		10	Edge of pavement	10		3	Edge of berm
-----------------	---	--	----	---------------------	----	--	---	-----------------

# SPEED STUDY DATA SHEET

 Date 09/26/06

 County MUS

 Municipality Muskingum County

 Highway name & number 0696 (ROSEHILL RD)

 Street classification STANDARD RURAL

Log point	* **	PHYSICAL CONDITION										* **	TRAFFIC CONTROL DEVICES				SPEED		ACCIDENTS	Test Runs		
																	85%	PACE				
													W1-1L	T								
2.7																						
													R2-1-35	T								
2.6													R2-1-35	T								
													R1-1	T								
													W1-5L	T								
2.5																						
													OM-3R	T								
													OM-3L	T								
2.4																						
2.3																						
2.2																						
2.1																						

Edge of berm | 3 | 10 | Edge of pavement | 10 | 3 | Edge of berm

# SPEED STUDY DATA SHEET

Date 09/26/06

County MUS

Municipality Muskingum County

↑  
N



Direction  
of route

Highway name & number 0696 (ROSEHILL RD)

Street classification STANDARD RURAL

Log point	*	**	PHYSICAL CONDITION						*	**	TRAFFIC CONTROL DEVICES			SPEED		ACCIDENTS	Test Runs
														85%	PACE		
3.4																	
3.3																	
3.2																	
3.1																	
3.0																	
2.9																	
2.8																	

SR 93  
TR 1677 (HECKEL DR)

R2-1-35

R1-1

TR 266 (LEWELLYN RD)

