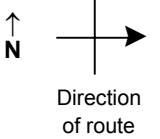


SPEED STUDY DATA SHEET

Date 10/04/06

County MUS

Municipality Muskingum County



Highway name & number 0708 (CLAY LITTICK RD)

Street classification STANDARD RURAL

Log point	* **		PHYSICAL CONDITION								* **		TRAFFIC CONTROL DEVICES				SPEED		ACCIDENTS	Test Runs
																	85%	PACE		
0.6																				
0.5																				
0.4																				
0.3																				
0.2																				
0.1																				
0.0																				

Edge of berm | 2 | 9 | Edge of pavement | 9 | 2 | Edge of berm