

# SPEED STUDY DATA SHEET

 Date 10/04/06

 County MUS

 Municipality Muskingum County

 Highway name & number 0723 (NORTH POINTE RD)

 Street classification STANDARD RURAL

Direction of route

Log point	* **		PHYSICAL CONDITION										* **		TRAFFIC CONTROL DEVICES					SPEED		ACCIDENTS	Test Runs															
																				85%	PACE																	
0.6																		W2-1	T																			
0.5																	R3-8	T																				
0.4																	R2-1-45	T																				
0.3																																						
0.2																	R2-1-45	T																				
0.1																																						
0.0																																						

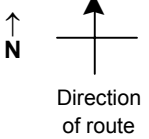
Edge of berm | 4 | 12 | Edge of pavement | 12 | 4 | Edge of berm

# SPEED STUDY DATA SHEET

Date 10/04/06

County MUS

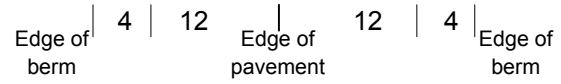
Municipality Muskingum County



Highway name & number 0723 (NORTH POINTE RD)

Street classification STANDARD RURAL

Log point	*	**	PHYSICAL CONDITION								*	**	TRAFFIC CONTROL DEVICES				SPEED		ACCIDENTS	Test Runs
			85%		PACE															
1.3																				
1.2																				
1.1																				
1.0												R2-1-55								
0.9									○			R2-1-55								
0.8																				
0.7																				

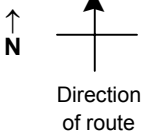


# SPEED STUDY DATA SHEET

Date 10/04/06

County MUS

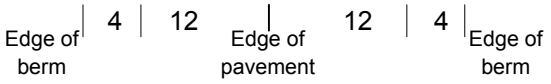
Municipality Muskingum County



Highway name & number 0723 (NORTH POINTE RD)

Street classification STANDARD RURAL

Log point	* **		PHYSICAL CONDITION										* **		TRAFFIC CONTROL DEVICES				SPEED		ACCIDENTS	Test Runs						
																	85%	PACE										
2.0																	R2-1-55	T		-	R2-1-55							
1.9																												
1.8																												
1.7																												
1.6																			o	o	o	o						
1.5																	R2-1-55	T		-	R2-1-55							
1.4																												



# SPEED STUDY DATA SHEET

Date 10/04/06

County MUS

Municipality Muskingum County

↑  
N



Direction  
of route

Highway name & number 0723 (NORTH POINTE RD)

Street classification STANDARD RURAL

Log point	* **		PHYSICAL CONDITION								* **		TRAFFIC CONTROL DEVICES				SPEED		ACCIDENTS	Test Runs		
																	85%	PACE				
2.7																						
													W2-1	T								
2.6													R3-8B	T								
2.5																						
2.4																						
2.3																						
2.2																						
2.1																						

Y CR 49 (POWELSON RD) Y

R2-1-55

R3-8B

R3-8B

W2-1

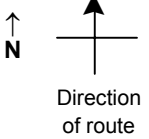
Edge of berm | 4 | 12 | Edge of pavement | 12 | 4 | Edge of berm

# SPEED STUDY DATA SHEET

Date 10/04/06

County MUS

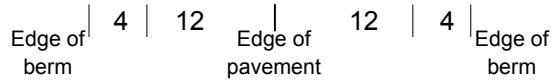
Municipality Muskingum County



Highway name & number 0723 (NORTH POINTE RD)

Street classification STANDARD RURAL

Log point	*	**	PHYSICAL CONDITION								*	**	TRAFFIC CONTROL DEVICES				SPEED		ACCIDENTS	Test Runs
			85%	PACE																
3.4																				
3.3																				
3.2																				
3.1																R2-1-55	T	R2-1-55		
3.0																				
2.9																				
2.8																				

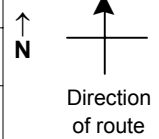


# SPEED STUDY DATA SHEET

Date 10/04/06

County MUS

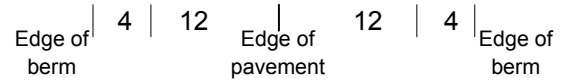
Municipality Muskingum County



Highway name & number 0723 (NORTH POINTE RD)

Street classification STANDARD RURAL

Log point	* **		PHYSICAL CONDITION								* **		TRAFFIC CONTROL DEVICES				SPEED		ACCIDENTS	Test Runs		
																	85%	PACE				
4.1														R2-1-55	┐		└	R2-1-55				
4.0																						
3.9																						
3.8																						
3.7																						
3.6														R2-1-55	┐		└	R2-1-55				
3.5																						

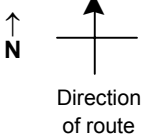


# SPEED STUDY DATA SHEET

Date 10/04/06

County MUS

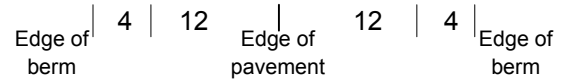
Municipality Muskingum County



Highway name & number 0723 (NORTH POINTE RD)

Street classification STANDARD RURAL

Log point	*	**	PHYSICAL CONDITION								*	**	TRAFFIC CONTROL DEVICES				SPEED		ACCIDENTS	Test Runs
			85%	PACE																
4.8																				
4.7																				
4.6																				
4.5												R2-1-55	T			▲ R2-1-55				
4.4																				
4.3																				
4.2																				

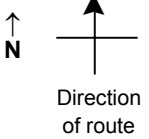


# SPEED STUDY DATA SHEET

Date 10/04/06

County MUS

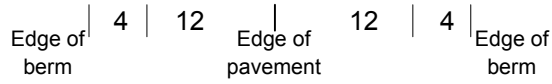
Municipality Muskingum County



Highway name & number 0723 (NORTH POINTE RD)

Street classification STANDARD RURAL

Log point	* **		PHYSICAL CONDITION								* **		TRAFFIC CONTROL DEVICES				SPEED		ACCIDENTS	Test Runs
																	85%	PACE		
5.5																				
													R2-1-55	T		R3-8B				
5.4																				
																W2-1				
5.3																				
5.2																				
5.1																				
5.0													R2-1-55	T		R2-1-55				
4.9																				



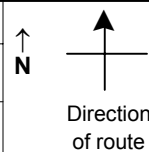


# SPEED STUDY DATA SHEET

Date 10/04/06

County MUS

Municipality Muskingum County



Highway name & number 0723 (NORTH POINTE RD)

Street classification STANDARD RURAL

Log point	*	**	PHYSICAL CONDITION						*	**	TRAFFIC CONTROL DEVICES				SPEED		ACCIDENTS	Test Runs	
			85%		PACE														
6.2																			
6.1																			
6.0																			
5.9																			
5.8																			
5.7																			
5.6																			

R2-1-55



R2-1-55

W2-1



R2-1-55

R3-8B

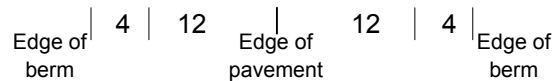


R3-8B



R3-8B

CR 116 (MCGLADE SCHOOL RD)

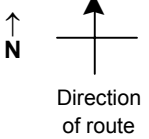


# SPEED STUDY DATA SHEET

Date 10/04/06

County MUS

Municipality Muskingum County



Highway name & number 0723 (NORTH POINTE RD)

Street classification STANDARD RURAL

Log point	* **	PHYSICAL CONDITION						* **	TRAFFIC CONTROL DEVICES			SPEED		ACCIDENTS	Test Runs
												85%	PACE		
6.9															
6.8															
6.7				∩	SR 60	∩				└ R3-8B					
6.6								R2-1-55	└		└ R3-8B				
6.5											└ JCT SR 60				
6.4															
6.3															

Edge of berm | 4 | 12 | Edge of pavement | 12 | 4 | Edge of berm