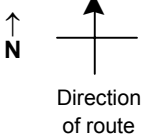


SPEED STUDY DATA SHEET

Date 10/03/06

County MUS

Municipality Muskingum County



Highway name & number 0797 (AIR PARK DR)

Street classification STANDARD RURAL

Log point	* **	PHYSICAL CONDITION										* **	TRAFFIC CONTROL DEVICES				SPEED		ACCIDENTS	Test Runs
																	85%	PACE		
1.4																				
1.3																				
1.2																				
1.1																				
1.0																				
0.9											●									
0.8											●									

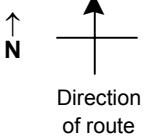
Edge of berm | 2 | 11 | Edge of pavement | 11 | 2 | Edge of berm

SPEED STUDY DATA SHEET

Date 10/03/06

County MUS

Municipality Muskingum County



Highway name & number 0797 (AIR PARK DR)

Street classification STANDARD RURAL

Log point	* **		PHYSICAL CONDITION								* **		TRAFFIC CONTROL DEVICES				SPEED		ACCIDENTS	Test Runs
																85%	PACE			
2.1																				
2.0																				
1.9																				
1.8																				
1.7																				
1.6																				
1.5																				

CR 796 (AIRPORT RD)

R2-1-35

R1-1



Edge of berm | 2 | 11 | Edge of pavement | 11 | 2 | Edge of berm

Sheet 2 of 2 sheets