

# SPEED STUDY DATA SHEET

Date 10/03/06

County MUS

Municipality Muskingum County

↑  
N



Direction  
of route

Highway name & number 0797 (RITCHEY PKWY)

Street classification STANDARD RURAL

Log point	* **		PHYSICAL CONDITION										* **		TRAFFIC CONTROL DEVICES					SPEED		ACCIDENTS	Test Runs									
																				85%	PACE											
0.6																																
0.5																																
0.4																																
0.3																																
0.2																																
0.1																																
0.0																																

∩ AIRPORT ENTRANCE

▬ R2-1-35

R2-1-35

\* BEGIN ROAD \*

Edge of berm | 2 | 11 | Edge of pavement | 11 | 2 | Edge of berm

Sheet 1 of 2 sheets

# SPEED STUDY DATA SHEET

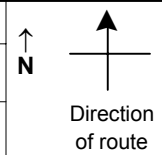
Date 10/03/06

County MUS

Municipality Muskingum County

Highway name & number 0797 (RITCHEY PKWY)

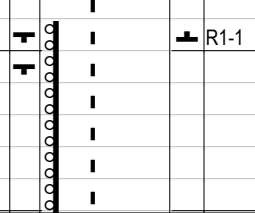
Street classification STANDARD RURAL



Log point	* **		PHYSICAL CONDITION						* **		TRAFFIC CONTROL DEVICES			SPEED		ACCIDENTS	Test Runs
														85%	PACE		
1.3																	
1.2																	
1.1																	
1.0																	
0.9																	
0.8																	
0.7																	

CR 797 (AIR PARK DR)

W14-2  
R2-1-35



R1-1



Edge of berm | 2 | 11 | Edge of pavement | 11 | 2 | Edge of berm

Sheet 2 of 2 sheets