

02-50-12-09-001

# ALAN DONAKER SURVEYING

**Alan Donaker, P.S.**

19849 TR 383

Walhonding, OH 43843

Fax: (740) 327-1083

Phone: (740) 327-7001



T-4

Being 13.896 acres more or less, in Section 12, First and Fourth Quarters, Township 3 North, Range 6 West, United States Military Lands, in the Township of Adams, in the County of Muskingum, in the State of Ohio, conveyed to Gerald E. and Iris K. Wagner, DR 524-690, (part, Second Parcel), Parcel No. 02-50-12-09-000 (part) and more particularly described as follows:

Commencing at a stone found at the Southeast corner of the Southeast Quarter of Section 12, said stone being the TRUE POINT OF BEGINNING;

thence, with the North line of Section 19, and the property line of Robert N. and Pearl M. Keefner, Trustees, DR 2595-793, the following 2 courses:

1. thence, N. 87° 54' 55" W. a distance of 717.73' to a 5/8" rebar set;
2. thence, N. 87° 54' 55" W. a distance of 15.74' to a point in the centerline of Lane Road;

thence, with the centerline of Lane Road, the following 10 courses:

1. thence, N. 10° 54' 41" E. a distance of 27.89' to a point;
2. thence, N. 07° 57' 16" E. a distance of 75.06' to a point;
3. thence, N. 04° 11' 47" E. a distance of 131.72' to a point;
4. thence, N. 03° 26' 13" E. a distance of 4.35' to a point;
5. thence, with a curve to the left, the curve data for which is: D = 25° 02' 08", R = 517.25', L = 226.01', Ch. B. N. 09° 04' 51" W., Ch. L. 224.22' to a point;
6. thence, N. 21° 35' 54" W. a distance of 45.58' to a point;
7. thence, N. 26° 16' 58" W. a distance of 54.73' to a point;
8. thence, N. 31° 34' 09" W. a distance of 169.63' to a point;
9. thence, N. 26° 21' 24" W. a distance of 42.71' to a point;
10. thence, with a curve to the right, the curve data for which is: D = 09° 25' 37", R = 358.07', L = 58.91', Ch. B. N. 21° 38' 34" W., Ch. L. 58.84' to a point;

thence, through the property of Gerald E. and Iris K. Wagner, DR 524-690, the following 2 courses:

1. thence, S. 87° 54' 55" E. a distance of 15.62' to a 5/8" rebar set;
2. thence, S. 87° 54' 55" E. a distance of 921.42' to a 5/8" rebar set;

thence, with the property line of William E. and Patty S. Adams, DR 703-41, S. 01° 41' 51" W. a distance of 780.73' to the TRUE POINT OF BEGINNING, containing 13.896 acres, more or less, including public road right-of-way and is subject to all easements, rights-of-way, or restrictions, whether recorded or implied.

Bearings are based on DR 1043-303 and are for angular calculations only.

All 5/8" rebars set are 30" long with plastic cap marked "AMD 8050".

Pertinent Documents: Tax Map and all Deeds shown

Surveys by: Richard Max Graves

Description and plat by Alan Donaker, Professional Surveyor, #8050, from a survey of the premises on July 15, in the year of our Lord Two Thousand Fifteen.

Page 1 of 1

**OFFICE COPY**  
**NOT RECORDABLE**

DESCRIPTION  
APPROVED  
By: *[Signature]*

APPROVED  
MUSKINGUM COUNTY  
PLANNING COMMISSION DIRECTOR

8/7/15  
Date

Fee Paid

02-50-12-09-000 A

This property is subject to all easements, rights-of-way or restrictions, whether recorded or implied.

ALAN DONAKER SURVEYING  
19849 TR 383  
Walhonding, OH 43843  
Telephone: (740) 327-7001  
Fax: (740) 327-1083

Pertinent Documents: Tax Map  
All Deeds and plats shown

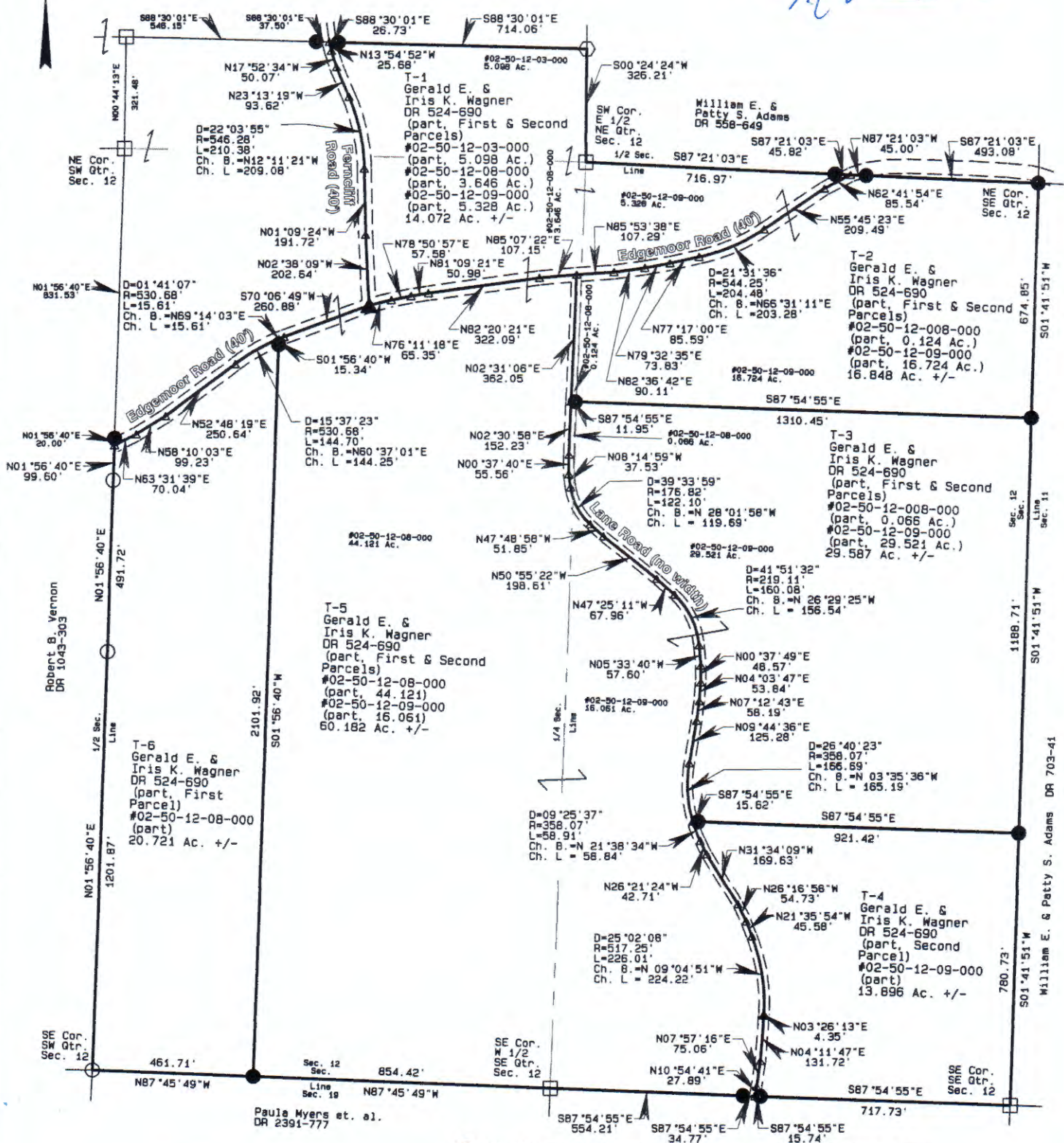
Bearings are based on  
DR 1043-303 and are for  
angular calculations only

Surveys By: Richard Max  
Graves

DESCRIPTION  
APPROVED

By: *[Signature]*

Ohio Franklin Realty LLC  
DR 2568-616



- All 5/8" rebar set are 30" long with plastic cap marked "AMD" 8050
- 5/8" rebar found
- 1.25" square bar found
- Stone found
- ▲ PK nail set
- △ Point

Approved for Transfer  
No On-Lot Sewage  
Zanesville-Muskingum Co.  
Health Department

*[Signature]*

APPROVED  
MUSKINGUM COUNTY  
PLANNING COMMISSION DIRECTOR

Gerald E. & Iris K. Wagner  
DR 524-690  
6 tracts  
First & Fourth Qtrs. T3N, R6W  
United States Military Lands  
Adams Township  
Muskingum County, Ohio  
Date: July 15, 2015

OFFICE COPY

I, Alan Donaker, P.S. 8050, hereby certify this plat to represent a boundary survey pursuant to Chapter 4733.37 Ohio Administrative Code and to be correct to the best of my knowledge and belief.

Fee Paid

GRAPHIC SCALE 1"=400'

