

ALAN DONAKER SURVEYING

Alan Donaker, P.S.

19849 TR 383

Walhonding, OH 43843

Fax: (740) 327-1083

Phone: (740) 327-7001

TRACT 1

Being 10.000 acres, more or less, in the Northeast Quarter of Section 11, Township 3 North, Range 6 West, United States Military Lands, in Township of Adams, in the County of Muskingum, in the State of Ohio, conveyed to Aaron S. and Martha Hostetler, DR 1994-409 (joint survivor) (part), Parcel No. 02-60-11-07-000 (part), and more particularly described as follows:

Commencing at a $\frac{3}{4}$ " pipe of record at the Northeast corner of Section 11, Township 3 North, Range 6 West;

thence, with the West line of Monroe Township, the following 3 courses:

1. thence, S. $01^{\circ} 12' 46''$ W. a distance of 790.09' to a $\frac{5}{8}$ " rebar set;
2. thence, S. $01^{\circ} 12' 46''$ W. a distance of 432.22' to a $\frac{5}{8}$ " rebar set;
3. thence, S. $01^{\circ} 12' 46''$ W. a distance of 100.02' to a $\frac{5}{8}$ " rebar found;

thence, with the property line of John R. and June L. McCort, DR 1730-947, N. $87^{\circ} 45' 48''$ W. a distance of 998.13' to a $\frac{5}{8}$ " rebar set, said rebar being the TRUE POINT OF BEGINNING:

thence, continuing with the property line of John R. and June L. McCort, DR 1730-947, the following 3 courses:

1. thence, N. $87^{\circ} 45' 48''$ W. a distance of 342.27' to a $\frac{5}{8}$ " rebar found;
2. thence, S. $01^{\circ} 22' 59''$ W. a distance of 493.93' to a $\frac{5}{8}$ " rebar set;
3. thence, S. $01^{\circ} 22' 59''$ W. a distance of 19.14' to a point in the centerline of Brush Run Road;

thence, with the centerline of Brush Run Road, the following 8 courses:

1. thence, N. $69^{\circ} 52' 47''$ W. a distance of 65.47' to a point;
2. thence, N. $61^{\circ} 19' 08''$ W. a distance of 57.79' to a point;
3. thence, N. $52^{\circ} 49' 05''$ W. a distance of 73.64' to a point;
4. thence, N. $48^{\circ} 04' 55''$ W. a distance of 82.08' to a point;
5. thence, N. $45^{\circ} 07' 20''$ W. a distance of 174.56' to a point;
6. thence, N. $48^{\circ} 47' 41''$ W. a distance of 109.72' to a point;
7. thence, N. $52^{\circ} 22' 58''$ W. a distance of 117.48' to a point;
8. thence, N. $51^{\circ} 44' 22''$ W. a distance of 63.26' to a point at the intersection of Brush Run Road and Edgemoor Road;

thence, with the centerline of Edgemoor Road, the following 9 courses:

1. thence, N. $31^{\circ} 54' 28''$ E. a distance of 45.00' to a point;
2. thence, N. $16^{\circ} 13' 21''$ E. a distance of 42.23' to a point;
3. thence, N. $11^{\circ} 47' 48''$ E. a distance of 42.58' to a point;
4. thence, N. $04^{\circ} 33' 50''$ E. a distance of 52.69' to a point;
5. thence, N. $05^{\circ} 42' 38''$ W. a distance of 37.44' to a point;
6. thence, N. $08^{\circ} 25' 37''$ W. a distance of 50.84' to a point;
7. thence, N. $35^{\circ} 18' 40''$ W. a distance of 54.78' to a point;

- 8. thence, N. 34° 41' 12" W. a distance of 57.55' to a point;
- 9. thence, N. 33° 21' 00" W. a distance of 6.85' to a point;

thence, through the property of Aaron S. and Martha Hostetler, DR 1994-409, the following 4 courses:

- 1. thence, S. 87° 45' 48" E. a distance of 25.00' to a 5/8" rebar set;
- 2. thence, S. 87° 45' 48" E. a distance of 359.36' to a 5/8" rebar set;
- 3. thence, S. 87° 45' 48" E. a distance of 593.34' to a 5/8" rebar set;
- 4. thence, S. 02° 14' 12" W. a distance of 276.66' to the TRUE POINT OF BEGINNING, containing 10.000 acres, more or less, including public road right-of-way and is subject to all easements, rights-of-way, or restrictions, whether recorded or implied.

Bearings are based on DR 1994-409 and are for angular calculations only.

All 5/8" rebars set are 30" long with plastic cap marked "AMD 8050".

Pertinent Documents: Tax Map, all Deeds and Plats shown

Surveys by: Terry J. Finley, Bruce D. Eckelberry

Description and plat by Alan Donaker, Professional Surveyor, #8050, from a survey of the premises on August 1, in the year of our Lord Two Thousand Eleven.

OFFICE COPY 9/1/11
NOT RECORDABLE

APPROVED
 MINOR LOT SPLIT ONLY
 MUSKINGUM COUNTY
 PLANNING COMMISSION DIRECTOR

9/27/11

Date Fee Paid

DESCRIPTION
 APPROVED
 By: [Signature] 9/20/11

This property is subject to all easements, rights-of-way or restrictions, whether recorded or implied

ALAN DONAKER SURVEYING
19849 TR 383
Walhonding, OH 43843
Telephone: (740) 327-7001
Fax: (740) 327-1083

Pertinent Documents: Tax Map
All Deeds and Plats Shown

Surveys by: Terry J. Finley,
Bruce D. Eckelberry

Bearings are based on
DR 1994-409 and are for
angular calculations only



Approved For Transfer
No On-Lot Sewage

Date 9/27/11

Zanesville - Muskingum Co.
Health Department

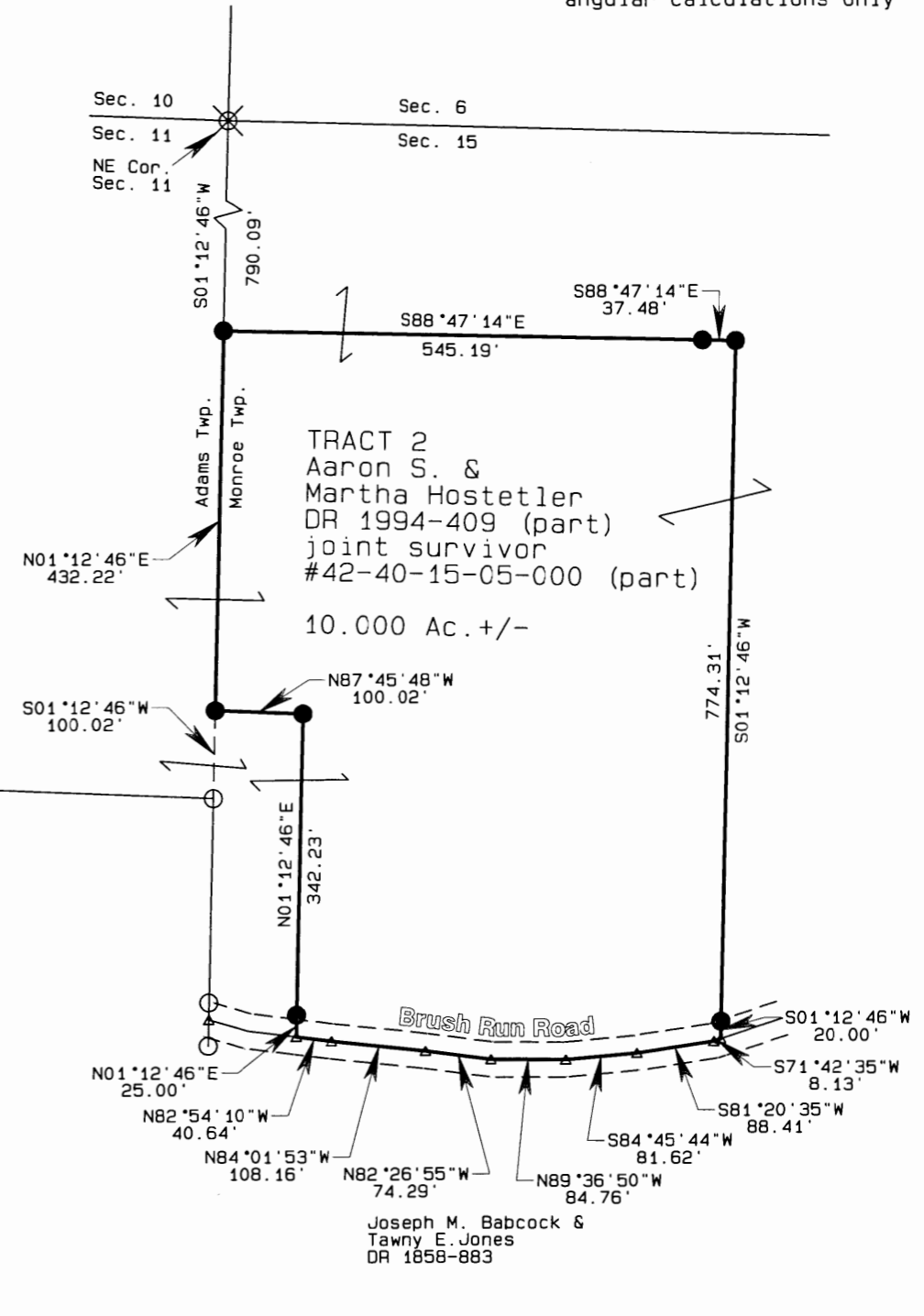
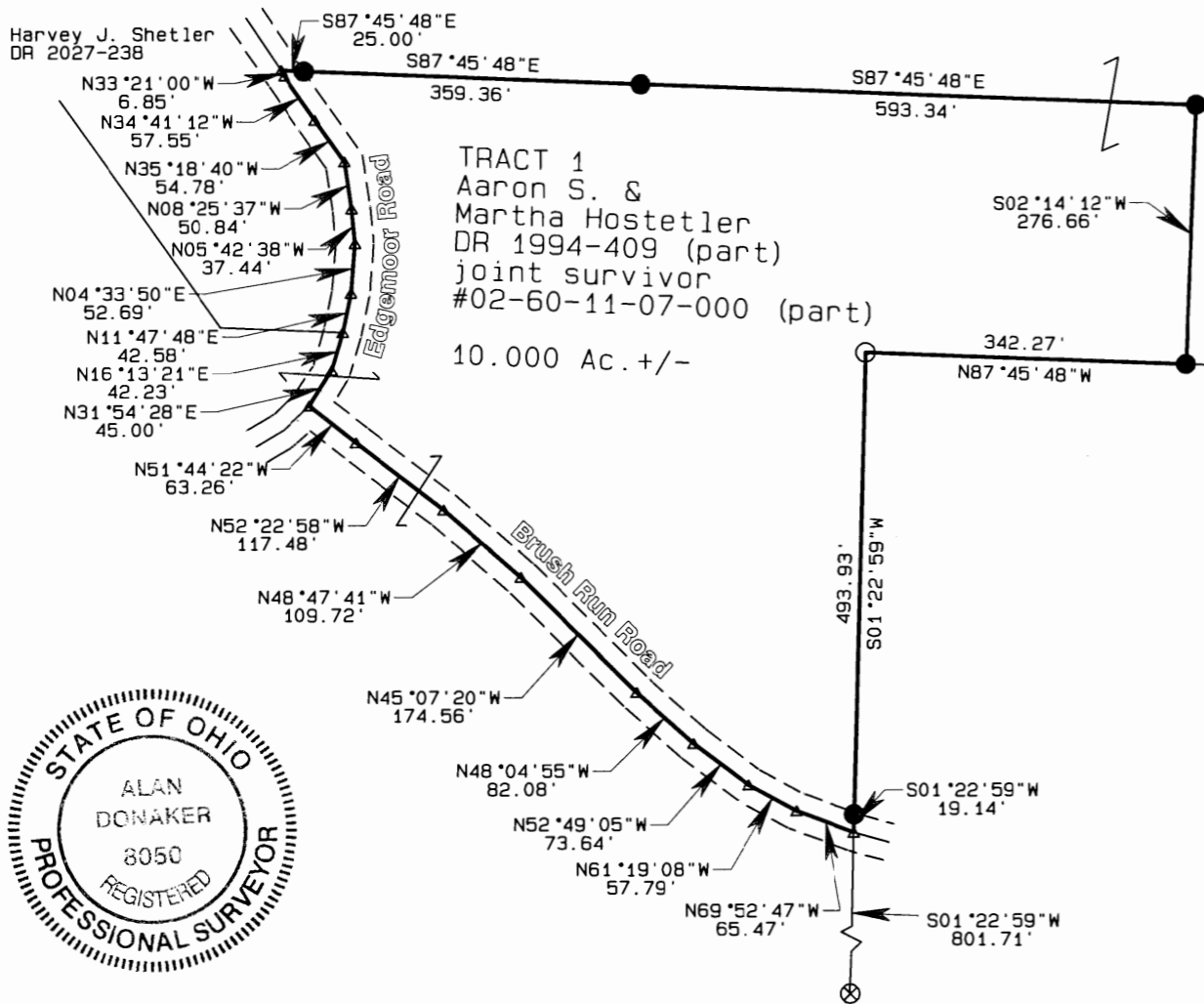
APPROVED
MINOR LOT SPLIT ONLY
MUSKINGUM COUNTY
PLANNING COMMISSION DIRECTOR

9/27/11

Date

Fee Paid

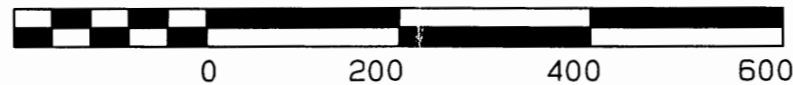
- All 5/8" rebars set are 30" long with plastic cap marked "AMD" 8050
- 5/8" rebar found
- ⊗ 1/2" rebar found
- ⊗ 3/4" pipe of record
- △ Point



DESCRIPTION
APPROVED
[Signature]

OFFICE COPY
I, Alan Donaker, P. S. 8050, hereby certify this plat to represent a boundary survey pursuant to Chapter 4733.37 Ohio Administrative Code and to be correct to the best of my knowledge and belief.

GRAPHIC SCALE 1"=200'



Aaron S. & Martha Hostetler
DR 1994-409
10.000 Ac +/- & 10.000 Ac +/-
NE Qtr. Sec. 11, T3N, R6W
NW Qtr. Sec. 15, T3N, R5W
United States Military Lands
Adams & Monroe Townships
Muskingum County, Ohio
Date: August 1, 2011