



LANDMARK SURVEYS

727 Cambridge Road
Coshocton, Ohio 43812

EARL R. DONAKER, P.S.

(614) 623-0993

1-800-842-3264

C. GLENN, RAYMOND C. & RUTH J. LAUTZENHEISER

109.000 Acres

TRACT 3

Being 109.000 acres, more or less, (55.596 acres, part of parcel 02-80-23-06), (40.000 acres, all of parcel 02-80-23-04), (13.404 acres, part of parcel 02-80-23-03), in the southwest quarter and in the northwest quarter of section 23, in the third quarter of township 3 north, range 6 west, United States Military Lands, in the township of Adams, in the county of Muskingum, in the State of Ohio, and more particularly described as follows:

Commencing at a stone found at the southwest corner of section 23;

thence, with the section line, N.01°58'38"W. 1942.29' to a 5/8" steel pin set, said 5/8" steel pin set being the TRUE POINT OF BEGINNING;

thence, continuing with the section line, N.01°58'38"W. 1575.16' to a point;

thence, through the property of C. Glenn Lautzenheiser, and Raymond C. & Ruth J. Lautzenheiser, 864/42, the following 2 courses:

1. thence, N.87°51'49"E. 2630.80' to a 5/8" steel pin set;
2. thence, continuing N.87°51'49"E. 30.00' to a point on the north & south 1/4 section line and also in Symmes Creek Road;

thence, with the north & south 1/4 section line, S.01°55'41"E. 1122.67' to a 5/8" steel pin set;

thence, with the property line of Ralph L. & Eleanor R. Vernon, 548/327, S.87°57'46"W. 16.12' to a point in the centerline of Symmes Creek Road, TR 168;

thence, with the centerline of Symmes Creek Road, TR 168, and the property line of Ralph L. & Eleanor R. Vernon, 548/327, the following 7 courses:

1. thence, with a curve to the right having the following properties:
Delta = 03°31'00"; Radius = 327.98'; Arc = 20.13'; Long Chord = S.15°45'09"W. 20.13' to a point;
2. thence, S.17°30'40"W. 87.04' to a point;
3. thence, with a curve to the right having the following properties:
Delta = 04°57'20"; Radius = 1068.59'; Arc = 92.42'; Long Chord = S.19°59'20"W. 92.39' to a point;
4. thence, S.22°28'00"W. 18.95' to a point;
5. thence, with a curve to the left having the following properties:
Delta = 29°40'40"; Radius = 634.02'; Arc = 328.41'; Long Chord = S.07°37'40"W. 324.75' to a point;
6. thence, S.07°12'40"E. 57.33' to a point;
7. thence, with a curve to the right having the following properties:
Delta = 10°16'42"; Radius = 351.91'; Arc = 63.13'; Long Chord = S.02°04'19"E. 63.05' to a point;

continued

727 Cambridge Road
Coshocton, Ohio 43812



LANDMARK SURVEYS

EARL R. DONAKER, P.S.

(614) 623-0993
1-800-842-3264

continued

thence, through the property of C. Glenn Lautzenheiser, and Raymond C. & Ruth J. Lautzenheiser, 864/42, the following 7 courses:

1. thence, S.73°15'31"W. 16.14' to a 5/8" steel pin set;
2. thence, continuing S.73°15'31"W. 224.59' to a 5/8" steel pin set;
3. thence, S.63°11'42"W. 1020.00' to a 5/8" steel pin set;
4. thence, N.29°57'49"W. 337.28' to a 5/8" steel pin set;
5. thence, continuing N.29°57'49"W. 410.15' to a 5/8" steel pin set;
6. thence, continuing N.29°57'49"W. 25.00' to a point;
7. thence, S.87°34'19"W. 996.33' to the TRUE PLACE OF BEGINNING, containing 109.000 acres, more or less, including public road right-of-way and is subject to all easements, rights-of-way, or restrictions, whether recorded or implied.

Bearings are based on Deed Book 864, page 42, and are for angular calculations only. N.00°00'00"W (North). All 5/8" steel pins set are 30" long.

Pertinent documents: tax maps: 56-01, 56-20, 02-80, 02-40, 02-70, 02-50; deeds: 864/42, 590/43, 850/65, 850/63, 548/327, 1043/103, 557/534, 554/35, 954/328, 538/399, 548/258, 467/344, 1002/103; surveys by: Jerry Lee Gamble.

Prior deed: 864/42.

Description and plat by Landmark Surveys, Earl R. Donaker, Professional Surveyor, #7142, from a survey of the premises in the month of September, in the year of our Lord one thousand nine hundred and ninety-two.

REPRODUCTION APPROVED
FOR TRANSFER

J. L. Gamble
10-08-92

THIS PROPERTY IS SUBJECT TO ALL EASEMENTS, RIGHTS-OF-WAY, OR RESTRICTIONS, WHETHER RECORDED OR IMPLIED.

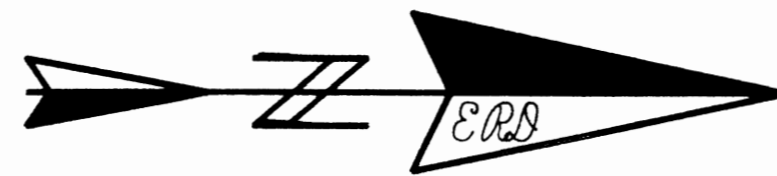
727 Cambridge Road
Coshocton, Ohio 43812

LANDMARK SURVEYS
EARL R. DONAKER, P.S.

tel: (614) 623-0993
1-800-842-3264

0 100 200 300 400
SCALE: 1" = 200'
ORIGINAL PLAT 24"x36"

NOTE: Adjoiner's Cabin is 11' +/- from property line. fence deviates around creek



NOTE: REMAINS OF WIRE FENCE ON THE WEST & NORTH LINES IS TREE TO TREE WITH SOME POSTS AND MAY BE EITHER SIDE OF THE TRUE PROPERTY LINE.

Pertinent documents: Tax maps: 56-01, 56-20, 02-80, 02-40, 02-70, 02-50

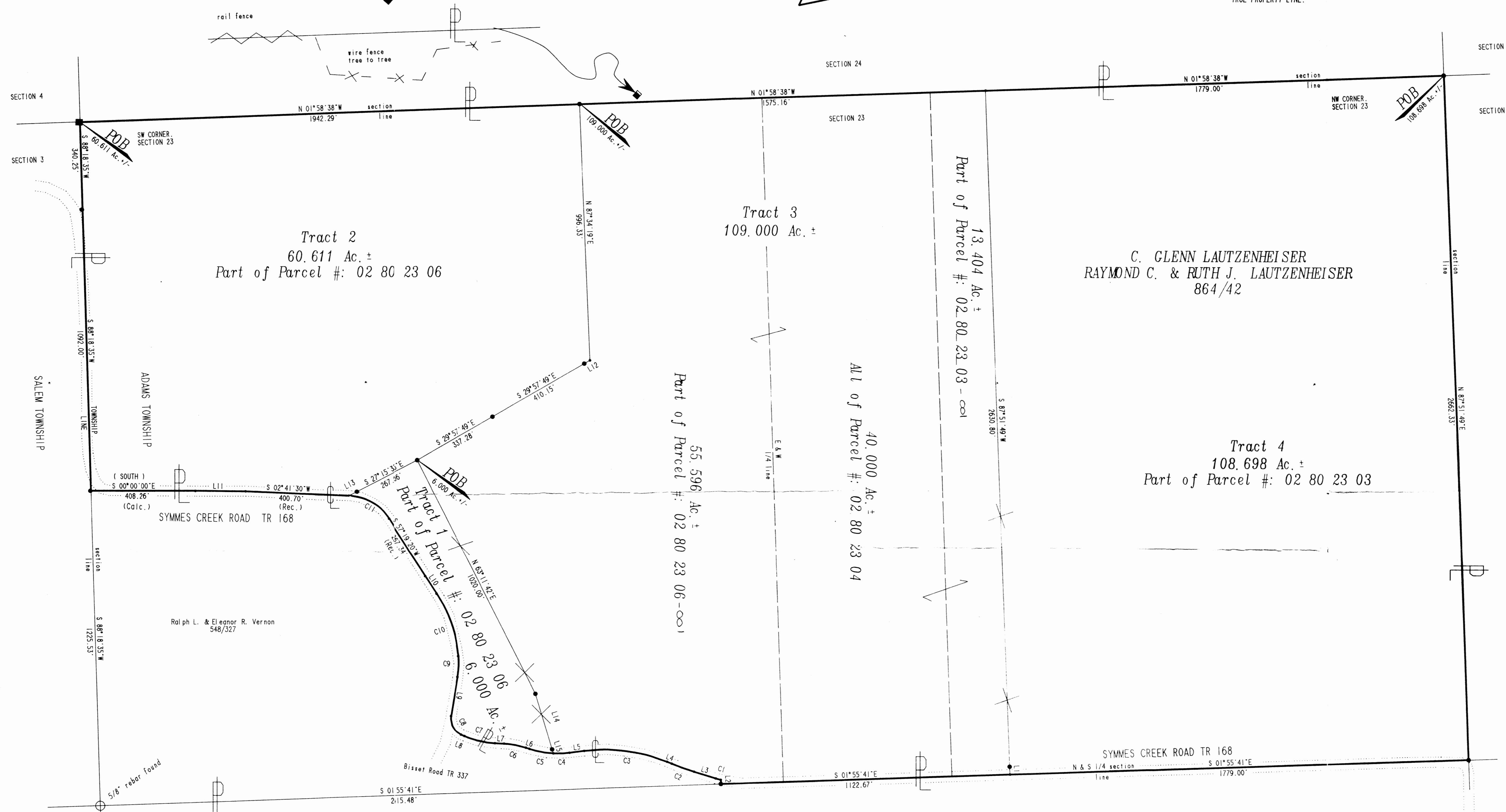
Deeds: 864/42, 590/43, 850/65, 850/63, 548/327, 1043/103, 357/334, 354/335, 954/326, 538/399, 548/258, 467/344, 1002/103

Surveys by: Jerry Lee Gamble

Bearings are based on D.B. 864/42, N.0000°00'W. (NORTH) and are for angular calculations only.

- All 5/8" steel pins set are 30" long, plastic cap marked, ERD 7142
- pins found as marked
- stone found v/cross
- point
- fiberglass rod set on line

NOTE: All distances between monumentation was measured. Distances to points were calculated. Record distances as marked. (Rec.)



LINE	BEARING	DISTANCE
L 1	S 87°51'49"W (Rec.)	30.00'
L 2	S 87°57'46"W (Rec.)	16.12'
L 3	S 17°30'40"W (Rec.)	87.04'
L 4	S 22°28'00"W (Rec.)	18.95'
L 5	S 07°12'40"E (Rec.)	57.33'
L 6	S 18°26'00"W (Rec.)	14.94'
L 7	S 02°40'20"W (Rec.)	34.84'
L 8	S 23°04'50"W (Rec.)	14.59'
L 9	N 80°31'30"W (Rec.)	153.81'
L 10	S 56°38'20"W (Rec.)	81.08'
L 11	S 00°37'20"W (Rec.)	194.88'
L 12	S 29°57'49"E	25.00'
L 13	S 27°15'33"E	35.00'
L 14	N 73°15'31"E	224.59'
L 15	N 73°15'31"E	16.14'

CURVE	DELTA ANGLE	RADIUS	ARC	TANGENT	CHORD	CHORD BEARING
C 1	03°31'00"	327.98'	20.13'	10.37'	20.13'	S 15°45'09"W (Rec.)
C 2	04°57'20"	1068.59'	92.42'	46.24'	92.39'	S 19°59'20"W (Rec.)
C 3	29°40'40"	634.02'	328.41'	167.38'	324.75'	S 07°37'40"W (Rec.)
C 4	10°16'42"	351.91'	63.13'	31.65'	63.05'	S 02°04'19"E (Calc.)
C 5	15°21'58"	351.91'	94.38'	47.17'	94.10'	S 10°45'01"W (Calc.)
C 6	15°45'40"	314.66'	86.56'	43.35'	86.29'	S 10°33'10"W (Rec.)
C 7	20°24'30"	342.22'	121.90'	61.60'	121.25'	S 12°52'35"W (Rec.)
C 8	76°23'40"	66.07'	88.09'	51.99'	81.71'	S 61°16'40"W (Rec.)
C 9	14°32'58"	318.11'	80.78'	40.51'	80.56'	N 87°47'59"W (Rec.)
C 10	28°17'12"	528.56'	260.95'	133.19'	258.31'	S 70°46'56"W (Rec.)
C 11	54°37'50"	195.22'	186.14'	100.32'	179.17'	S 30°00'25"W (Rec.)



Earl R. Donaker, P.S. 7142, hereby certify that I am duly qualified to represent a boundary survey pursuant to Chapter 4733-37, Ohio Administrative Code, and to be correct to the best of my knowledge and belief.

C. GLENN LAUTZENHEISER, et al.
ACRES: 284.309
SECTION: 23
THIRD QUARTER, T 3N R 6W
UNITED STATES MILITARY LANDS
TOWNSHIP: ADAMS
COUNTY: MUSKINGUM, OHIO
DATE: SEPTEMBER, 1992

"Remove not the old landmark." Proverbs 23:10

DESCRIPTION APPROVED FOR AUDITOR'S TRANSFER
C. J. Gamble
10-07-92
10-08-92

02-80-23-03-001 ✓
02-80-23-04-000
02-80-23-06-001



LANDMARK SURVEYS

727 Cambridge Road
Coshocton, Ohio 43812

EARL R. DONAKER, P.S.

(614) 623-0993

1-800-842-3264

C. GLENN, RAYMOND C. & RUTH J. LAUTZENHEISER

109.000 Acres

TRACT 3

Being 109.000 acres, more or less, (55.596 acres, part of parcel 02-80-23-06), (40.000 acres, all of parcel 02-80-23-04), (13.404 acres, part of parcel 02-80-23-03), in the southwest quarter and in the northwest quarter of section 23, in the third quarter of township 3 north, range 6 west, United States Military Lands, in the township of Adams, in the county of Muskingum, in the State of Ohio, and more particularly described as follows:

Commencing at a stone found at the southwest corner of section 23;

thence, with the section line, N.01°58'38"W. 1942.29' to a 5/8" steel pin set, said 5/8" steel pin set being the TRUE POINT OF BEGINNING;

thence, continuing with the section line, N.01°58'38"W. 1575.16' to a point;

thence, through the property of C. Glenn Lautzenheiser, and Raymond C. & Ruth J. Lautzenheiser, 864/42, the following 2 courses:

1. thence, N.87°51'49"E. 2630.80' to a 5/8" steel pin set;
2. thence, continuing N.87°51'49"E. 30.00' to a point on the north & south 1/4 section line and also in Symmes Creek Road;

thence, with the north & south 1/4 section line, S.01°55'41"E. 1122.67' to a 5/8" steel pin set;

thence, with the property line of Ralph L. & Eleanor R. Vernon, 548/327, S.87°57'46"W. 16.12' to a point in the centerline of Symmes Creek Road, TR 168;

thence, with the centerline of Symmes Creek Road, TR 168, and the property line of Ralph L. & Eleanor R. Vernon, 548/327, the following 7 courses:

1. thence, with a curve to the right having the following properties:
Delta = 03°31'00"; Radius = 327.98'; Arc = 20.13'; Long Chord = S.15°45'09"W. 20.13' to a point;
2. thence, S.17°30'40"W. 87.04' to a point;
3. thence, with a curve to the right having the following properties:
Delta = 04°57'20"; Radius = 1068.59'; Arc = 92.42'; Long Chord = S.19°59'20"W. 92.39' to a point;
4. thence, S.22°28'00"W. 18.95' to a point;
5. thence, with a curve to the left having the following properties:
Delta = 29°40'40"; Radius = 634.02'; Arc = 328.41'; Long Chord = S.07°37'40"W. 324.75' to a point;
6. thence, S.07°12'40"E. 57.33' to a point;
7. thence, with a curve to the right having the following properties:
Delta = 10°16'42"; Radius = 351.91'; Arc = 63.13'; Long Chord = S.02°04'19"E. 63.05' to a point;

continued



LANDMARK SURVEYS

127 Cambridge Road
Coshocton, Ohio 43812

EARL R. DONAKER, P.S.

(614) 623-0993
1-800-842-3264

continued

thence, through the property of C. Glenn Lautzenheiser, and Raymond C. & Ruth J. Lautzenheiser, 864/42, the following 7 courses:

1. thence, S.73°15'31"W. 16.14' to a 5/8" steel pin set;
2. thence, continuing S.73°15'31"W. 224.59' to a 5/8" steel pin set;
3. thence, S.63°11'42"W. 1020.00' to a 5/8" steel pin set;
4. thence, N.29°57'49"W. 337.28' to a 5/8" steel pin set;
5. thence, continuing N.29°57'49"W. 410.15' to a 5/8" steel pin set;
6. thence, continuing N.29°57'49"W. 25.00' to a point;
7. thence, S.87°34'19"W. 996.33' to the TRUE PLACE OF BEGINNING, containing 109.000 acres, more or less, including public road right-of-way and is subject to all easements, rights-of-way, or restrictions, whether recorded or implied.

Bearings are based on Deed Book 864, page 42, and are for angular calculations only. N.00°00'00"W (North). All 5/8" steel pins set are 30" long.

Pertinent documents: tax maps: 56-01, 56-20, 02-80, 02-40, 02-70, 02-50; deeds: 864/42, 590/43, 850/65, 850/63, 548/327, 1043/103, 557/534, 554/35, 954/328, 538/399, 548/258, 467/344, 1002/103; surveys by: Jerry Lee Gamble.

Prior deed: 864/42.

Description and plat by Landmark Surveys, Inc. R. Donaker, Professional Surveyor, #7142, from a survey of the premises in the month of September, in the year of our Lord one thousand nine hundred and ninety-two.

OFFICE COPY
NOT RECORDABLE

DESCRIPTION APPROVED
FOR AUDITOR'S TRANSFER

BY J. L. Gamble
10-08-92

THIS PROPERTY IS SUBJECT TO ALL EASEMENTS, RIGHTS-OF-WAY, OR RESTRICTIONS, WHETHER RECORDED OR IMPLIED.

727 Cambridge Road
Coshocton, Ohio 43812

LANDMARK SURVEYS
EARL R. DONAKER, P. S.

tel: (614) 623-0993
1-800-842-3264

8975 SYMMES CREEK TR.
9205 SYMMES CREEK TR.

02-80-23-03-001 02-80-23-06-001
02-80-23-03-000 PS 02-80-23-06-002

0 100 200 300 400
SCALE: 1" = 200'
ORIGINAL PLAT 24" X 36"

NOTE: Adjoiner's Cabin is 11' +/- from property line. fence deviates around creek

NOTE: REMAINS OF WIRE FENCE ON THE WEST & NORTH LINES IS TREE TO TREE WITH SOME POSTS AND MAY BE EITHER SIDE OF THE TRUE PROPERTY LINE.

Pertinent documents: Tax maps: 56-01, 56-20, 02-80, 02-40, 02-70, 02-50

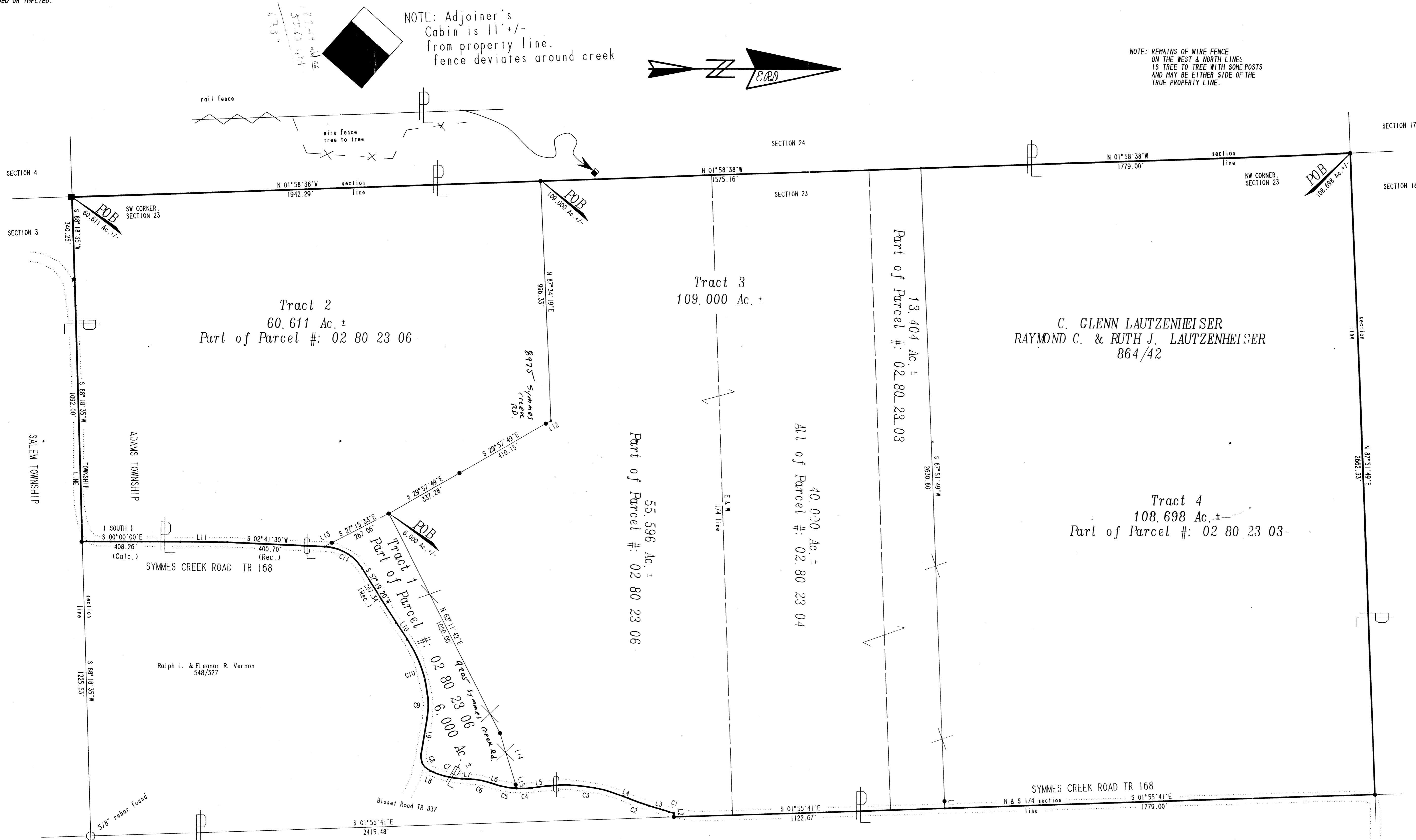
Deeds: 864/42, 590/43, 850/65, 850/63, 548/327, 1043/103, 557/534, 554/35, 954/328, 538/399, 548/258, 467/344, 1002/103

Surveys by: Jerry Lee Gamble

Bearings are based on D.B. 864/42, N. 00°00'00"W. (NORTH) and are for angular calculations only.

- All 5/8" steel pins set are 30" long, plastic cap marked "ERD 7142"
- pins found as marked
- stone found w/cross
- point
- ✕ fiberglass rod set on line

NOTE: All distances between monumentation was measured. Distances to points were calculated. Record distances as marked. (Rec.)



LINE	BEARING	DISTANCE
L 1	S 87°51'49"W (Rec.)	30.00'
L 2	S 87°57'46"W (Rec.)	16.12'
L 3	S 17°30'40"W (Rec.)	87.04'
L 4	S 22°28'00"W (Rec.)	18.95'
L 5	S 07°12'40"E (Rec.)	57.33'
L 6	S 18°26'00"W (Rec.)	14.94'
L 7	S 02°40'20"W (Rec.)	34.84'
L 8	S 23°04'50"W (Rec.)	14.59'
L 9	N 80°31'30"W (Rec.)	153.81'
L 10	S 56°38'20"W (Rec.)	81.08'
L 11	S 00°37'20"W (Rec.)	194.88'
L 12	S 29°57'49"E	25.00'
L 13	S 27°15'33"E	35.00'

CURVE	DELTA ANGLE	RADIUS	ARC	TANGENT	CHORD	CHORD BEARING
C 1	03°31'00"	327.98'	20.13'	10.07'	20.13'	S 15°45'09"W (Rec.)
C 2	04°57'20"	1068.59'	92.42'	46.24'	92.39'	S 19°59'20"W (Rec.)
C 3	29°40'40"	634.02'	328.41'	167.98'	324.75'	S 07°37'40"W (Rec.)
C 4	10°16'42"	351.91'	63.13'	31.65'	63.05'	S 02°04'19"E (Calc.)
C 5	15°21'58"	351.91'	94.38'	47.47'	94.10'	S 10°45'01"W (Calc.)
C 6	15°45'40"	314.66'	86.56'	43.55'	86.29'	S 10°33'10"W (Rec.)
C 7	20°24'30"	342.22'	121.90'	61.60'	121.25'	S 12°52'35"W (Rec.)
C 8	76°23'40"	66.07'	88.09'	51.99'	81.71'	S 61°16'40"W (Rec.)
C 9	14°32'58"	318.11'	80.78'	40.61'	80.56'	N 87°47'59"W (Rec.)
C 10	28°17'12"	528.56'	260.95'	133.19'	258.31'	S 70°46'56"W (Rec.)
C 11	54°37'50"	195.22'	186.14'	100.83'	179.17'	S 30°00'25"W (Rec.)



C. GLENN LAUTZENHEISER, et al.
ACRES: 284,700