

ALAN DONAKER SURVEYING

Alan Donaker, P.S.

19849 TR 383

Walhonding, OH 43843

Phone: (740) 327-7001

Fax: (740) 327-6101

Being 4.246 acres, more or less, in the Southwest Quarter of Section 23, Township 3 North, Range 6 West, United States Military Lands, in the Township of Adams, in the County of Muskingum, in the State of Ohio, conveyed to Dennis M. Kimberlin, DR 1071-313 (part), Parcel No. 02-80-23-06-002 (part), and more particularly described as follows:

Commencing at a stone of record at the Southwest corner of Section 23;

thence, with the Township line between Adams Township and Salem Township, the following two (2) courses;

1. thence, N. 88° 18' 35" E. a distance of 340.25' to a 5/8" steel pin of record;
2. thence, N. 88° 18' 35" E. a distance of 1092.00' to a 5/8" steel pin of record;

thence, with the centerline of Symmes Creek Road, Township Road 168, and the property line of David B. and Susie J. Tilly, DR 1153-450, the following five (5) courses;

1. thence, N. 00° 00' 00" E. a distance of 408.26' to a point;
2. thence, N. 00° 37' 20" E. a distance of 194.88' to a point;
3. thence, N. 02° 41' 30" E. a distance of 400.70' to a point;
4. thence, with a curve to the right, the curve data for which is: Delta 54° 37' 50", Radius 195.22', Arc 186.14', Tangent 100.83', Chord 179.17', Chord Bearing N. 30° 00' 25" E., to a point;
5. thence, N. 57° 19' 20" E. a distance of 214.54' to a point, said point being the TRUE POINT OF BEGINNING;

thence, through the property of Dennis M. Kimberlin, DR 1071-313, the following two (2) courses;

1. thence, N. 28° 22' 06" W. a distance of 18.99' to a 5/8" steel pin set;
2. thence, N. 28° 22' 06" W. a distance of 163.10' to a 5/8" steel pin set;

thence, with the property line of David B. and Susie J. Tilly, DR 1153-450, the following three (3) courses;

1. thence, N. 63° 11' 42" E. a distance of 659.22' to a 5/8" steel pin found;
2. thence, N. 73° 15' 31" E. a distance of 224.59' to a 5/8" steel pin found;
3. thence, N. 73° 15' 31" E. a distance of 16.14' to a point in the centerline of Symmes Creek Road Township Road 168;

thence, with the centerline of Symmes Road, Township Road 168, and the property line of Ralph L. and Eleanor R. Vernon, DR 548-327, the following twelve (12) courses;

1. thence, with a curve to the right, the curve data for which is: Delta $15^{\circ} 21' 58''$, Radius 351.91', Arc 94.38', Tangent 47.47', Chord 94.10', Chord Bearing S. $10^{\circ} 45' 01''$ W., to a point;
2. thence, S. $18^{\circ} 26' 00''$ W. a distance of 14.94' to a point;
3. thence, with a curve to the left, the curve data for which is: Delta $15^{\circ} 45' 40''$, Radius 314.66', Arc 86.56', Tangent 43.55', Chord 86.29', Chord Bearing S. $10^{\circ} 33' 10''$ W., to a point;
4. thence, S. $02^{\circ} 40' 20''$ W. a distance of 34.84' to a point;
5. thence, with a curve to the right, the curve data for which is: Delta $20^{\circ} 24' 30''$, Radius 342.22', Arc 121.90', Tangent 61.60', Chord 121.25', Chord Bearing S. $12^{\circ} 52' 35''$ W., to a point;
6. thence, S. $23^{\circ} 04' 50''$ W. a distance of 14.59' to a point;
7. thence, with a curve to the right, the curve data for which is: Delta $76^{\circ} 23' 40''$, Radius 66.07', Arc 88.09', Tangent 51.99', Chord 81.71', Chord Bearing S. $61^{\circ} 16' 40''$ W., to a point;
8. thence, N. $80^{\circ} 31' 30''$ W. a distance of 153.81' to a point;
9. thence, with a curve to the left, the curve data for which is: Delta $14^{\circ} 32' 58''$, Radius 318.11', Arc 80.78', Tangent 40.61', Chord 80.56', Chord Bearing N. $87^{\circ} 47' 59''$ W., to a point;
10. thence, with a curve to the left, the curve data for which is: Delta $28^{\circ} 17' 12''$, Radius 528.56', Arc 260.95', Tangent 133.19', Chord 258.31', Chord Bearing S. $70^{\circ} 46' 56''$ W., to a point;
11. thence, S. $56^{\circ} 38' 20''$ W. a distance of 81.08' to a point;
12. thence, S. $57^{\circ} 19' 20''$ W. a distance of 52.80' to the TRUE POINT OF BEGINNING, containing 4.246 acres, more or less, including public road right-of-way and is subject to all easements, rights-of-way, or restrictions, whether recorded or implied.

Bearings are based on DR 1071-313 and are for angular calculations only.

All 5/8" steel pins set are 30" long with plastic cap marked "AMD 8050".

Pertinent Documents: Tax Map;

DR: 1071-313, 1153-450, 548-327

Surveys by: Earl R. Donaker

Description and plat by Alan Donaker, Professional Surveyor, #8050, from a survey of the premises in the month of May in the year of our Lord Two Thousand two.

**OFFICE COPY
NOT RECORDABLE**

RECORDED & INDEXED
FOR AUDIENCE TRAILER
BY *[Signature]*
5-20-2002

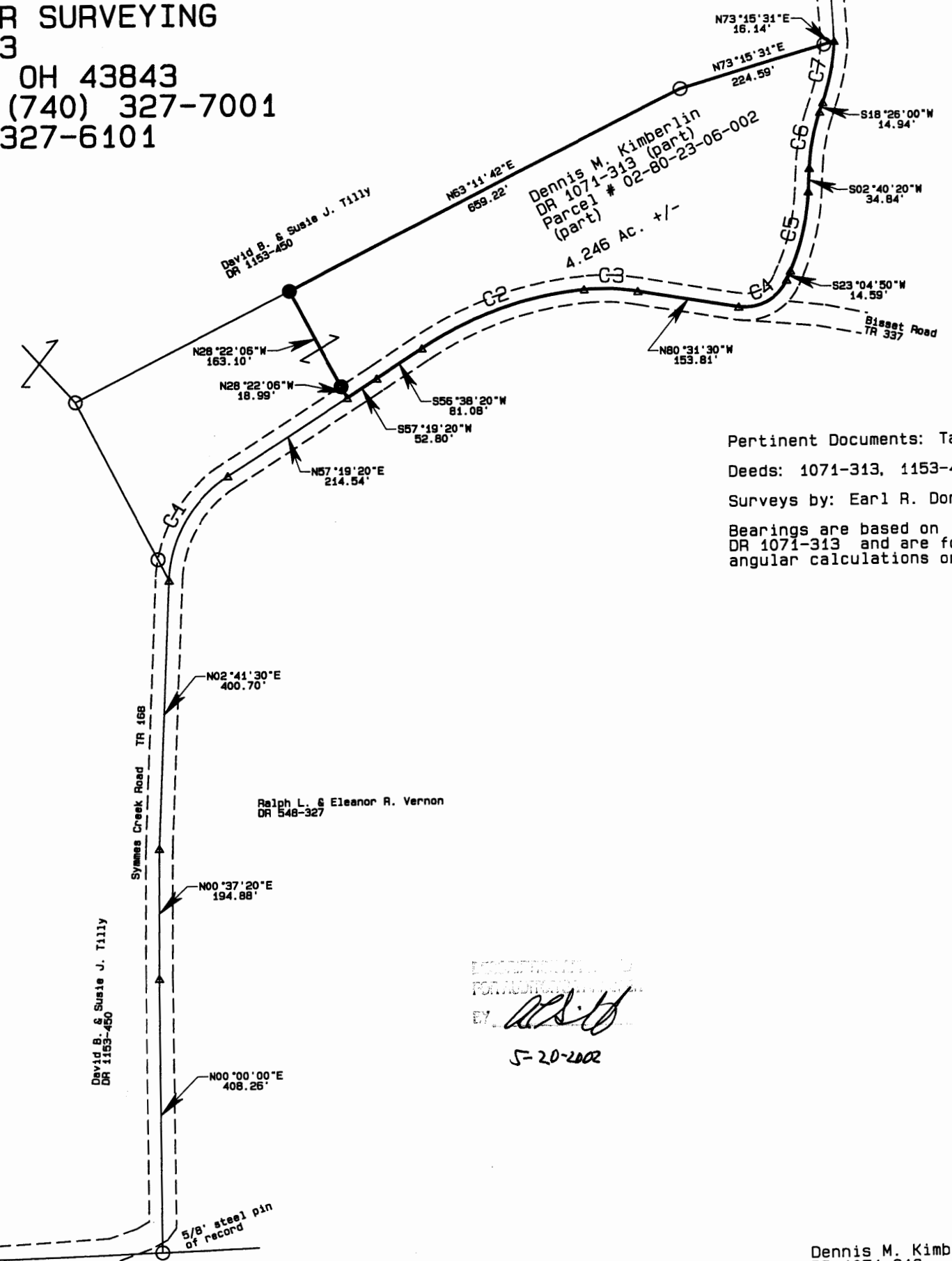
This property is subject to all easements, rights-of-way or restrictions, whether recorded or implied

ALAN DONAKER SURVEYING
 19849 TR 383
 Walhonding, OH 43843
 Telephone: (740) 327-7001
 Fax: (740) 327-6101



- All 5/8" steel pins set are 30" long with plastic cap marked "AMD 8050"
- 5/8" steel pin found or as marked
- Stone of record
- ▲ Point

LINE	DELTA	RADIUS	ARC	TANGENT	CHORD	CHORD BEARING
C1	54°37'50"	195.22'	186.14'	100.83'	179.17'	N30°00'25"E
C2	28°17'12"	528.56'	260.95'	133.19'	258.31'	S70°46'56"W
C3	14°32'58"	318.11'	80.78'	40.61'	80.56'	N87°47'59"W
C4	76°23'40"	66.07'	88.09'	51.99'	81.71'	S61°16'40"W
C5	20°24'30"	342.22'	121.90'	61.60'	121.25'	S12°52'35"W
C6	15°45'40"	314.66'	86.56'	43.55'	86.29'	S10°33'10"W
C7	15°21'58"	351.91'	94.38'	47.47'	94.10'	S10°45'01"W

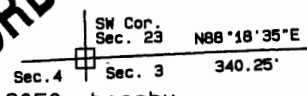


Pertinent Documents: Tax Map
 Deeds: 1071-313, 1153-450, 548-
 Surveys by: Earl R. Donaker
 Bearings are based on
 DR 1071-313 and are for
 angular calculations only

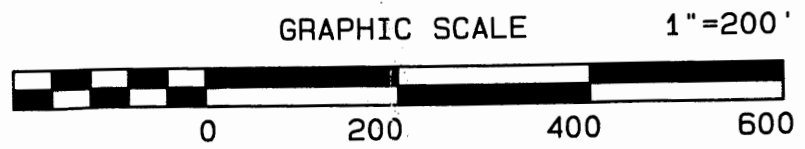


**OFFICE COPY
 NOT RECORDABLE**

I, Alan Donaker, S. 8050, hereby certify this plat to represent a boundary survey pursuant to Chapter 4733.37 of the Administrative Code and to be correct to the best of my knowledge and belief.



Adams Twp.
 Township
 Line
 Salem Twp.



FOR RECORD
 BY: *[Signature]*
 5-20-2002

Dennis M. Kimberlin
 DR 1071-313
 4.246 Ac +/-
 S.W. Quarter,
 Sec. 23, T3N, R6W
 United States Military L
 Adams Township
 Muskingum County, Ohio
 Date: May 2002


LANDMARK SURVEY
EARL R. DONAKER

727 Cambridge Road
 Coshocton, Ohio 43812

C. GLENN, RAYMOND C. & RUTH J. LAUTZENHEISER

(614) 623-0993
 1-800-842-3264
 6.000 Acres

TRACT 1

Being 6.000 acres, more or less, part of parcel 02-80-23-06, in the southwest quarter of section 23, in the third quarter of township 3 north, range 6 west, United States Military Lands, in the township of Adams, in the county of Muskingum, in the State of Ohio, and more particularly described as follows:

Commencing at a stone found at the southwest corner of section 23;

thence, with the section line, N.01°58'38"W. 1942.29' to a 5/8" steel pin set;

thence, through the property of C. Glenn Lautzenheiser, and Raymond C. & Ruth J. Lautzenheiser, 864/42, the following 4 courses:

1. thence, N.87°34'19"E. 996.33' to a point;
2. thence, S.29°57'49"E. 25.00' to a 5/8" steel pin set;
3. thence, continuing S.29°57'49"E. 410.15' to a 5/8" steel pin set;
4. thence, continuing S.29°57'49"E. 337.28' to a 5/8" steel pin set, said 5/8" steel pin set being the TRUE POINT OF BEGINNING;

thence, continuing through the property of C. Glenn Lautzenheiser, and Raymond C. & Ruth J. Lautzenheiser, 864/42, the following 3 courses:

1. thence, N.63°11'42"E. 1020.00' to a 5/8" steel pin set;
2. thence, N.73°15'31"E. 224.59' to a 5/8" steel pin set;
3. thence, continuing N.73°15'31"E. 16.14' to a point in the centerline of Symmes Creek Road, TR 168;

thence, with the centerline of Symmes Creek Road, TR 168 and the property line of Ralph L. & Eleanor R. Vernon, 548/327, the following 13 courses:

1. thence, with a curve to the right having the following properties:
 Delta = 15°21'58"; Radius = 351.91'; Arc = 94.38'; Long Chord = S.10°45'01"W. 94.10' to a point;
2. thence, S.18°26'00"W. 14.94' to a point;
3. thence, with a curve to the left having the following properties:
 Delta = 15°45'40"; Radius = 314.66'; Arc = 86.56'; Long Chord = S.10°33'10"W. 86.29' to a point;
4. thence, S.02°40'20"W. 34.84' to a point;
5. thence, with a curve to the right having the following properties:
 Delta = 20°24'30"; Radius = 342.22'; Arc = 121.90'; Long Chord = S.12°52'35"W. 121.25' to a point;
6. thence, S.23°04'50"W. 14.59' to a point;
7. thence, with a curve to the right having the following properties:
 Delta = 76°23'40"; Radius = 66.07'; Arc = 88.09'; Long Chord = S.61°16'40"W. 81.71' to a point;
8. thence, N.80°31'30"W. 153.81' to a point;
9. thence, with a curve to the left having the following properties:
 Delta = 14°32'58"; Radius = 318.11'; Arc = 80.78'; Long Chord = N.87°47'59"W. 80.56' to a point;

continued



LANDMARK SURVEYS

EARL R. DONAKER, P.S.

727 Cambridge Road
Coshocton, Ohio 43812

(614) 623-0993
1-800-842-3264

continued

10. thence, with a curve to the left having the following properties:
Delta = $28^{\circ}17'12''$; Radius = 528.56'; Arc = 260.95'; Long Chord =
S. $70^{\circ}46'56''$ W. 258.31' to a point;
11. thence, S. $56^{\circ}38'20''$ W. 81.08' to a point;
12. thence, S. $57^{\circ}19'20''$ W. 267.34' to a point;
13. thence, with a curve to the left having the following properties:
Delta = $54^{\circ}37'50''$; Radius = 195.22'; Arc = 186.14'; Long Chord =
S. $30^{\circ}00'25''$ W. 179.17' to a point;

thence, through the property of C. Glenn Lautzenheiser, and Raymond C. & Ruth J. Lautzenheiser, 864/42, the following 2 courses:

1. thence, N. $27^{\circ}15'33''$ W. 35.00' to a 5/8" steel pin set;
2. thence, continuing N. $27^{\circ}15'33''$ W. 267.06' to the TRUE POINT OF BEGINNING, containing 6.000 acres, more or less, including public road right-of-way and is subject to all easements, rights-of-way, or restrictions, whether recorded or implied.

Bearings are based on Deed Book 864, page 42, and are for angular calculations only. N. $00^{\circ}00'00''$ W (North). All 5/8" steel pins set are 30" long.

Pertinent documents: tax maps: 56-01, 56-20, 02-80, 02-40, 02-70, 02-50; deeds: 864/42, 590/43, 850/65, 850/63, 548/327, 1043/103, 557/534, 554/35, 954/328, 538/399, 548/258, 467/344, 1002/103; surveys by: Jerry Lee Gamble.

Prior deed: 864/42.

Description and plat by Landmark Surveys, Earl R. Donaker, Professional Surveyor, #7142, from a survey of the premises in the month of September, in the year of our Lord one thousand nine hundred and ninety-two.

DESCRIPTION APPROVED
FOR AUDITOR'S TRANSFER

BY JL Gamble
10-07-92

OFFICE COPY
NOT RECORDABLE

THIS PROPERTY IS SUBJECT TO ALL EASEMENTS, RIGHTS-OF-WAY, OR RESTRICTIONS, WHETHER RECORDED OR IMPLIED.

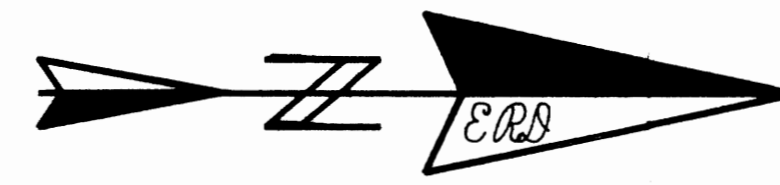
727 Cambridge Road
Coshocton, Ohio 43812

LANDMARK SURVEYS
EARL R. DONAKER, P. S.

tel: (614) 623-0993
1-800-842-3264

0 100 200 300 400
SCALE: 1" = 200'
ORIGINAL PLAT 24" X 36"

NOTE: Adjoiner's Cabin is 11' +/- from property line. fence deviates around creek



NOTE: REMAINS OF WIRE FENCE ON THE WEST & NORTH LINES IS TREE TO TREE WITH SOME POSTS AND MAY BE EITHER SIDE OF THE TRUE PROPERTY LINE.

Pertinent documents: Tax maps: 56-01, 56-20, 02-80, 02-40, 02-70, 02-50

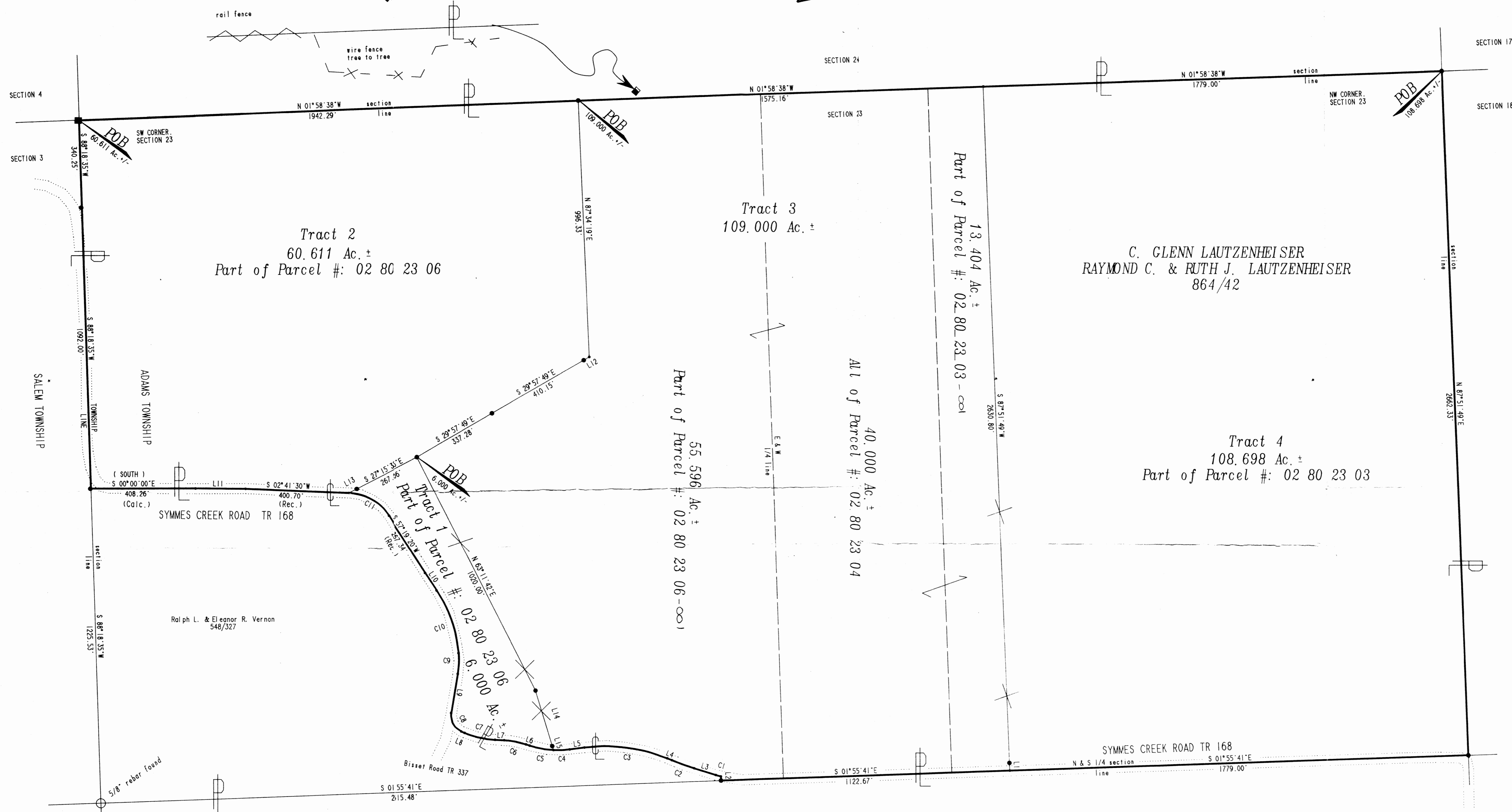
Deeds: 864/42, 590/43, 850/65, 850/63, 548/327, 1043/103, 557/534, 554/35, 954/328, 538/399, 548/258, 467/344, 1002/103

Surveys by: Jerry Lee Gamble

Bearings are based on D.B. 864/42, N.00°00'00"W. (NORTH) and are for angular calculations only.

- All 5/8" steel pins set are 30" long, plastic cap marked "ERD 7142"
- pins found as marked
- stone found w/cross
- point
- ✕ fiberglass rod set on line

NOTE: All distances between monumentation was measured. Distances to points were calculated. Record distances as marked. (Rec.)



LINE	BEARING	DISTANCE
L 1	S 87°51'49"W (Rec.)	30.00'
L 2	S 87°57'46"W (Rec.)	16.12'
L 3	S 17°30'40"W (Rec.)	87.04'
L 4	S 22°28'00"W (Rec.)	18.95'
L 5	S 07°12'40"E (Rec.)	57.33'
L 6	S 18°26'00"W (Rec.)	14.94'
L 7	S 02°40'20"W (Rec.)	34.84'
L 8	S 23°04'50"W (Rec.)	14.59'
L 9	N 80°31'30"W (Rec.)	153.81'
L 10	S 56°38'20"W (Rec.)	81.08'
L 11	S 00°37'20"W (Rec.)	194.88'
L 12	S 29°57'49"E	25.00'
L 13	S 27°15'33"E	35.00'
L 14	N 73°15'31"E	224.59'
L 15	N 73°15'31"E	16.14'

CURVE	DELTA ANGLE	RADIUS	ARC	TANGENT	CHORD	CHORD BEARING
C 1	03°31'00"	327.98'	20.13'	10.37'	20.13'	S 15°45'09"W (Rec.)
C 2	04°57'20"	1068.59'	92.42'	46.24'	92.39'	S 19°59'20"W (Rec.)
C 3	29°40'40"	634.02'	328.41'	167.98'	324.75'	S 07°37'40"W (Rec.)
C 4	10°16'42"	351.91'	63.13'	31.55'	63.05'	S 02°04'19"E (Calc.)
C 5	15°21'58"	351.91'	94.38'	47.47'	94.10'	S 10°45'01"W (Rec.)
C 6	15°45'40"	314.66'	86.56'	43.35'	86.29'	S 10°33'10"W (Rec.)
C 7	20°24'30"	342.22'	121.90'	61.60'	121.25'	S 12°52'35"W (Rec.)
C 8	76°23'40"	66.07'	88.09'	51.99'	81.71'	S 61°16'40"W (Rec.)
C 9	14°32'58"	318.11'	80.78'	40.51'	80.56'	N 87°47'59"W (Rec.)
C 10	28°17'12"	528.56'	260.95'	133.19'	258.31'	S 70°46'56"W (Rec.)
C 11	54°37'50"	195.22'	186.14'	100.33'	179.17'	S 30°00'25"W (Rec.)



I, Earl R. Donaker, P. S. 7142, hereby certify this plat to represent a boundary survey pursuant to Chapter 4733-37, Ohio Administrative Code and to be correct to the best of my knowledge and belief.

DESCRIPTION APPROVED FOR AUDITOR'S TRANSFER
10-07-92
10-08-92

C. GLENN LAUTZENHEISER, et al.
ACRES: 284.309
SECTION: 23
THIRD QUARTER, T 3N, R 6W,
UNITED STATES MILITARY LANDS
TOWNSHIP: ADAMS
COUNTY: MUSKINGUM, OHIO
DATE: SEPTEMBER, 1992

"Remove not the old landmark." Proverbs 23:10

9205 SYMMES CREEK RD

idge Road
Ohio 43812



LANDMARK SURVEYS
EARL R. DONAKEN, P.S.

(614) 623-0993

1-800-842-3264

C. GLENN, RAYMOND C. & RUTH J. LAUTZENHEISER

6.000 Acres

TRACT 1

Being 6.000 acres, more or less, part of parcel 02-80-23-06, in the southwest quarter of section 23, in the third quarter of township 3 north, range 6 west, United States Military Lands, in the township of Adams, in the county of Muskingum, in the State of Ohio, and more particularly described as follows:

Commencing at a stone found at the southwest corner of section 23;

thence, with the section line, N.01°58'38"W. 1942.29' to a 5/8" steel pin set;

thence, through the property of C. Glenn Lautzenheiser, and Raymond C. & Ruth J. Lautzenheiser, 864/42, the following 4 courses:

1. thence, N.87°34'19"E. 996.33' to a point;
2. thence, S.29°57'49"E. 25.00' to a 5/8" steel pin set;
3. thence, continuing S.29°57'49"E. 410.15' to a 5/8" steel pin set;
4. thence, continuing S.29°57'49"E. 337.28' to a 5/8" steel pin set, said 5/8" steel pin set being the TRUE POINT OF BEGINNING;

thence, continuing through the property of C. Glenn Lautzenheiser, and Raymond C. & Ruth J. Lautzenheiser, 864/42, the following 3 courses:

1. thence, N.63°11'42"E. 1020.00' to a 5/8" steel pin set;
2. thence, N.73°15'31"E. 224.59' to a 5/8" steel pin set;
3. thence, continuing N.73°15'31"E. 16.14' to a point in the centerline of Symmes Creek Road, TR 168;

thence, with the centerline of Symmes Creek Road, TR 168 and the property line of Ralph L. & Eleanor R. Vernon, 548/327, the following 13 courses:

1. thence, with a curve to the right having the following properties:
Delta = 15°21'58"; Radius = 351.91'; Arc = 94.38'; Long Chord = S.10°45'01"W. 94.10' to a point;
2. thence, S.18°26'00"W. 14.94' to a point;
3. thence, with a curve to the left having the following properties:
Delta = 15°45'40"; Radius = 314.66'; Arc = 86.56'; Long Chord = S.10°33'10"W. 86.29' to a point;
4. thence, S.02°40'20"W. 34.84' to a point;
5. thence, with a curve to the right having the following properties:
Delta = 20°24'30"; Radius = 342.22'; Arc = 121.90'; Long Chord = S.12°52'35"W. 121.25' to a point;
6. thence, S.23°04'50"W. 14.59' to a point;
7. thence, with a curve to the right having the following properties:
Delta = 76°23'40"; Radius = 66.07'; Arc = 88.09'; Long Chord = S.61°16'40"W. 81.71' to a point;
8. thence, N.80°31'30"W. 153.81' to a point;
9. thence, with a curve to the left having the following properties:
Delta = 14°32'58"; Radius = 318.11'; Arc = 80.78'; Long Chord = N.87°47'59"W. 80.56' to a point;

continued

727 Cambridge Road
Coshocton, Ohio 43812



LANDMARK SURVEYS

EARL R. DONAKER, P.S.

(614) 623-0993
1-800-842-3264

continued

10. thence, with a curve to the left having the following properties:
Delta = $28^{\circ}17'12''$; Radius = 528.56'; Arc = 260.95'; Long Chord =
S. $70^{\circ}46'56''$ W. 258.31' to a point;
11. thence, S. $56^{\circ}38'20''$ W. 81.08' to a point;
12. thence, S. $57^{\circ}19'20''$ W. 267.34' to a point;
13. thence, with a curve to the left having the following properties:
Delta = $54^{\circ}37'50''$; Radius = 195.22'; Arc = 186.14'; Long Chord =
S. $30^{\circ}00'25''$ W. 179.17' to a point;

thence, through the property of C. Glenn Lautzenheiser, and Raymond C. & Ruth J. Lautzenheiser, 864/42, the following 2 courses:

1. thence, N. $27^{\circ}15'33''$ W. 35.00' to a 5/8" steel pin set;
2. thence, continuing N. $27^{\circ}15'33''$ W. 267.06' to the TRUE POINT OF BEGINNING, containing 6.000 acres, more or less, including public road right-of-way and is subject to all easements, rights-of-way, or restrictions, whether recorded or implied.

Bearings are based on Deed Book 864, page 42, and are for angular calculations only. N. $00^{\circ}00'00''$ W (North). All 5/8" steel pins set are 30" long.

Pertinent documents: tax maps: 56-01, 56-20, 02-80, 02-40, 02-70, 02-50; deeds: 864/42, 590/43, 850/65, 850/63, 548/327, 1043/103, 557/534, 554/35, 954/328, 538/399, 548/258, 467/344, 1002/103; surveys by: Jerry Lee Gamble.

Prior deed: 864/42.

Description and plat by Landmark Surveys, Earl R. Donaker, Professional Surveyor, #7142, from a survey of the premises in the month of September, in the year of our Lord one thousand nine hundred and ninety-two.

DESCRIPTION APPROVED
FOR AUDITOR'S TRANSFER

BY JL Gamble
10-07-92

OFFICE COPY
NOT RECORDABLE

THIS PROPERTY IS SUBJECT TO ALL EASEMENTS, RIGHTS-OF-WAY, OR RESTRICTIONS, WHETHER RECORDED OR IMPLIED.

727 Cambridge Road
Coshocton, Ohio 43812

LANDMARK SURVEYS
EARL R. DONAKER, P.S.

tel: (614) 623-0993
1-800-842-3264

8975 SYMMES CREEK TR
9205 SYMMES CREEK TR

02-80-23-04-000 02-80-23-06-000
02-80-23-03-001 02-80-23-06-001
02-80-23-03-000 PS 02-80-23-06-002

0 100 200 300 400
SCALE: 1" = 300'
ORIGINAL PLAT 24" X 36"

NOTE: Adjoiner's Cabin is 11' +/- from property line. fence deviates around creek

NOTE: REMAINS OF WIRE FENCE ON THE WEST & NORTH LINES IS TREE TO TREE WITH SOME POSTS AND MAY BE EITHER SIDE OF THE TRUE PROPERTY LINE.

Pertinent documents: Tax maps: 56-01, 56-20, 02-80, 02-40, 02-70, 02-50

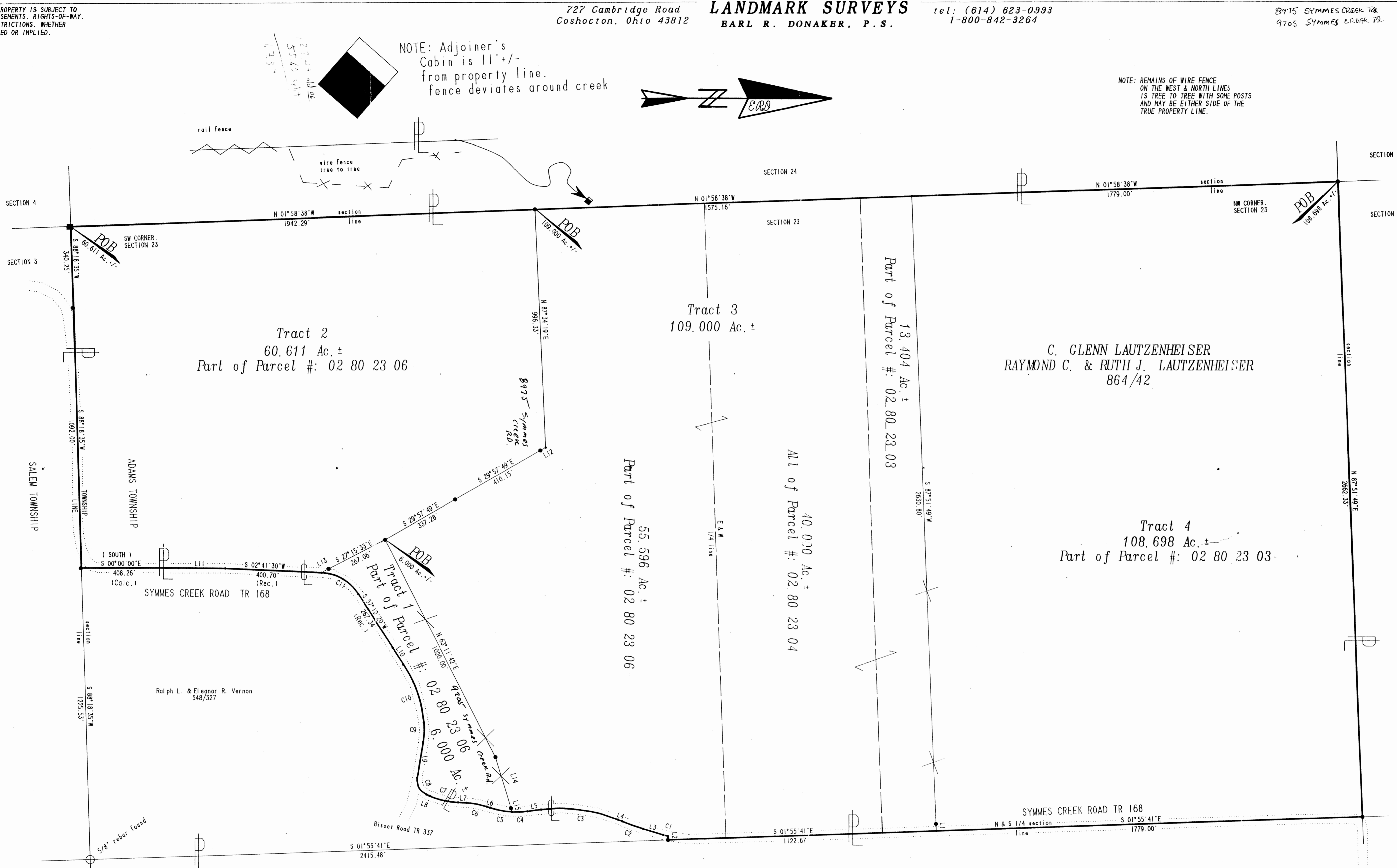
Deeds: 864/42, 590/43, 850/65, 850/63, 548/327, 1043/103, 557/534, 554/335, 954/328, 538/399, 548/258, 467/344, 1002/103

Surveys by: Jerry Lee Gamble

Bearings are based on D.B. 864/42, N. 00°00'00"W. (NORTH) and are for angular calculations only.

- - All 5/8" steel pins set are 30" long, plastic cap marked "ERD 7142"
- - pins found as marked
- - stone found s/cross
- - point
- ✕ - fiberglass rod set on line

NOTE: All distances between monumentation was measured. Distances to points were calculated. Record distances as marked. (Rec.)



LINE	BEARING	DISTANCE
L 1	S 87°51'49"W (Rec.)	30.00'
L 2	S 87°57'46"W (Rec.)	16.12'
L 3	S 17°30'40"W (Rec.)	87.04'
L 4	S 22°28'00"W (Rec.)	18.95'
L 5	S 07°12'40"E (Rec.)	57.33'
L 6	S 18°26'00"W (Rec.)	14.94'
L 7	S 02°40'20"W (Rec.)	34.84'
L 8	S 23°04'50"W (Rec.)	14.59'
L 9	N 80°31'30"W (Rec.)	153.81'
L 10	S 56°38'20"W (Rec.)	81.08'
L 11	S 00°37'20"W (Rec.)	194.88'
L 12	S 29°57'49"E	25.00'
L 13	S 27°15'33"E	35.00'
L 14	N 73°15'31"E	224.59'
L 15	N 73°15'31"E	16.14'

CURVE	DELTA ANGLE	RADIUS	ARC	TANGENT	CHORD	CHORD BEARING
C 1	03°31'00"	327.98'	20.13'	10.07'	20.13'	S 15°45'09"W (Rec.)
C 2	04°57'20"	1068.59'	92.42'	46.24'	92.39'	S 19°59'20"W (Rec.)
C 3	29°40'40"	634.02'	328.41'	167.98'	324.75'	S 07°37'40"W (Rec.)
C 4	10°16'42"	351.91'	63.13'	31.65'	63.05'	S 02°04'19"E (Calc.)
C 5	15°21'58"	351.91'	94.38'	47.47'	94.10'	S 10°45'01"W (Calc.)
C 6	15°45'40"	314.66'	86.56'	43.55'	86.29'	S 10°33'10"W (Rec.)
C 7	20°24'30"	342.22'	121.90'	61.60'	121.25'	S 12°52'35"W (Rec.)
C 8	76°23'40"	66.07'	88.09'	51.99'	81.71'	S 61°16'40"W (Rec.)
C 9	14°32'58"	318.11'	80.78'	40.61'	80.56'	N 87°47'59"W (Rec.)
C 10	28°17'12"	528.56'	260.95'	133.19'	258.31'	S 70°46'56"W (Rec.)
C 11	54°37'50"	195.22'	186.14'	100.83'	179.17'	S 30°00'25"W (Rec.)

STATE OF OHIO
EARL R. DONAKER
P.S. 7142
REGISTERED PROFESSIONAL SURVEYOR
Earl R. Donaker
I, Earl R. Donaker, P.S. 7142, hereby certify this plat to represent a boundary survey pursuant to Chapter 4733-37, Ohio Administrative Code, and to be correct to the best of my knowledge and belief.

DESCRIPTION APPROVED FOR AUDITOR'S TRANSFER
By: *J. J. Gambler*
10-07-92
10-68-92

C. GLENN LAUTZENHEISER et al.
ACRES: 284.309
SECTION: 23
THIRD QUARTER, T 3N. R 6W.
UNITED STATES MILITARY LANDS
TOWNSHIP: ADAMS
COUNTY: MUSKINGUM, OHIO
DATE: SEPTEMBER, 1992

"Remove not the old landmark." Proverbs 23:10