



Linn Engineering, Inc.

Civil Engineering Consultants

740-452-7434 • 1-800-991-7434 • FAX 740-452-5198

534 Market Street • P.O. Box 2086 • Zanesville, Ohio 43702-2086

TRACT 42

OFFICE COPY
NOT RECORDABLE

Situated in the State of Ohio, County of Muskingum, Township of Blue Rock, bounded and described as follows:

Being part of the Southwest Quarter and South Half of Section 27 and part of the North Half of Section 34, Township 12, Range 12 of Blue Rock Township of Congress Lands East of the Scioto River, also being part of lands now owned by Ohio Power Company as described in Muskingum County Deed Reference 558-722 and 568-471, and more particularly described as follows:

Beginning for reference at an iron pin found at the Southeast Corner of the Southeast Quarter of Section 27, Blue Rock Township, Township 12, Range 12 of the Congress Lands East of the Scioto River;

thence along the south line of said Section 27 North 87 degrees 28 minutes 35 seconds West for a distance of 1076.46 feet to the centerline of Peyton Road (CR-231) to the principal place of beginning;

thence along the said centerline of Peyton Road the following six courses:

- 1) South 03 degrees 42 minutes 34 seconds East for a distance of 33.37 feet to a point;
- 2) South 04 degrees 27 minutes 28 seconds West for a distance of 92.90 feet to a point;
- 3) a curve to the right having a radius of 520.00 feet and an arc length of 172.31 feet, being subtended by a chord bearing South 16 degrees 50 minutes 37 seconds West for a distance of 171.52 feet to a point;
- 4) South 38 degrees 50 minutes 02 seconds West for a distance of 86.04 feet to a point;
- 5) South 48 degrees 34 minutes 02 seconds West for a distance of 291.59 feet to a point;
- 6) South 43 degrees 42 minutes 12 seconds West for a distance of 593.82 feet to a point at the intersection with the centerline of Roberts Road (TR-466);

thence along the said centerline of Roberts Road the following eleven courses:

- 1) North 43 degrees 45 minutes 25 seconds West for a distance of 120.30 feet to a point;
- 2) a curve to the right having a radius of 898.00 feet and an arc length of 340.83 feet, being subtended by a chord bearing North 31 degrees 09 minutes 58 seconds West for a distance of 338.79 feet to a point;
- 3) North 16 degrees 18 minutes 33 seconds West for a distance of 532.70 feet to a point;
- 4) a curve to the left having a radius of 242.33 feet and an arc length of 314.79 feet, being subtended by a chord bearing North 50 degrees 57 minutes 37 seconds West for a distance of 293.12 feet to a point;
- 5) South 88 degrees 28 minutes 01 seconds West for a distance of 265.12 feet to a point;
- 6) North 87 degrees 31 minutes 43 seconds West for a distance of 181.51 feet to a point;
- 7) North 83 degrees 53 minutes 14 seconds West for a distance of 110.53 feet to a point;
- 8) North 81 degrees 20 minutes 45 seconds West for a distance of 150.95 feet to a point;
- 9) North 87 degrees 09 minutes 33 seconds West for a distance of 646.33 feet to a point;
- 10) North 82 degrees 01 minutes 03 seconds West for a distance of 50.70 feet to a point;
- 11) North 75 degrees 19 minutes 32 seconds West for a distance of 13.16 feet to a point;

thence leaving Roberts Road and through lands now owned by Ohio Power Company (DR 568-471) the following four courses;

✓

- 1) North 03 degrees 00 minutes 19 seconds East for a distance of 367.84 feet to an iron pin set, passing an iron pin set at 13.00 feet;
- 2) North 39 degrees 22 minutes 54 seconds East for a distance of 606.10 feet to an iron pin set;
- 3) North 39 degrees 56 minutes 02 seconds East for a distance of 468.28 feet to an iron pin set;
- 4) North 60 degrees 54 minutes 51 seconds East for a distance of 137.58 feet to an iron pin set on the south line of lands now owned by A.I. Fritter and R.J. Hughes (OR 1631-424);

thence along said Fritter and Hughes south line South 87 degrees 24 minutes 07 seconds East for a distance of 525.00 feet to an iron pin found on the southeast corner of said lands;

thence along said Fritter and Hughes east line North 03 degrees 06 minutes 41 seconds East for a distance of 330.00 feet to an iron pin set on the southwest corner of lands now owned by N. Betz (OR 1659-72);

thence along said Betz's south line the following four courses:

- 1) South 86 degrees 57 minutes 25 seconds East for a distance of 841.50 feet to an iron pin set;
- 2) South 03 degrees 02 minutes 35 seconds West for a distance of 99.00 feet to an iron pin set;
- 3) South 73 degrees 02 minutes 45 seconds East for a distance of 973.50 feet to an iron pin set;
- 4) South 19 degrees 32 minutes 45 seconds East for a distance of 272.94 feet to an iron pin found on the northwest corner of lands now owned by C.L. Wilkins (OR 1779-689);

thence along said Wilken's west line the following two courses:

- 1) South 36 degrees 05 minutes 05 seconds West for a distance of 733.26 feet to an iron pin set;
- 2) South 01 degrees 14 minutes 22 seconds East for a distance of 462.00 feet to an iron pin set on the section line;

thence along the section line North 87 degrees 28 minutes 35 seconds West 15.33 feet to the centerline of Peyton Road and the principal place of beginning;

containing 107.80 acres, more or less, subject to all legal road right of ways and applicable easements, written or implied.

Iron pins set are 5/8 inch diameter by 30 inch long rebar with plastic identification caps.

Bearings are based on NAD 83, Ohio State Plane Coordinate System, South Zone, Grid North, as per GPS observations of Muskingum County GPS Monuments.

This description is written based on a survey completed October 22, by Jack D. Newcome, Reg. No. 7321.

Jack D. Newcome, Reg. No. 7321

Date

DESCRIPTION APPROVED
FOR AUDITOR'S TRANSFER

BY

11-3-2003

PARCEL NO.:

Part of: 06-80-27-09-000 (59.45 Ac.)
Part of: 06-80-27-08-000 (31.23 Ac.)
Part of: 06-80-34-02-000 (17.12 Ac.)

ADDRESS N/A

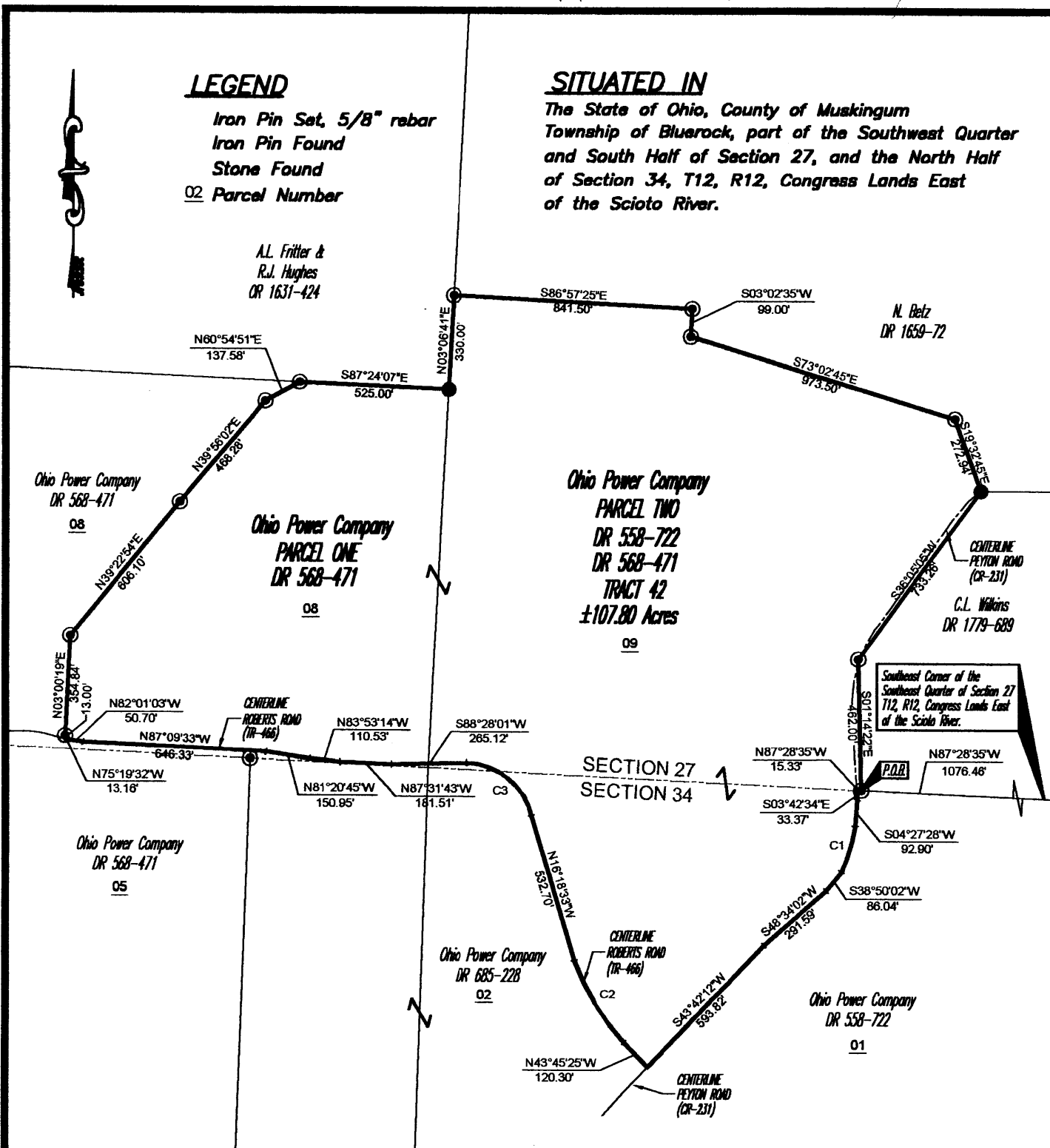
06-80-27-08
06-80-34-02-002

LEGEND

Iron Pin Set, 5/8" rebar
Iron Pin Found
Stone Found
02 Parcel Number

SITUATED IN

The State of Ohio, County of Muskingum
Township of Bluerock, part of the Southwest Quarter
and South Half of Section 27, and the North Half
of Section 34, T12, R12, Congress Lands East
of the Scioto River.



CURVE TABLE

CURVE	LENGTH	RADIUS	DELTA	CHORD	BEARING
C1	172.31	520.00	18°59'10"	171.52	S16°50'37"W
C2	340.83	898.00	21°44'47"	338.79	N31°09'58"W
C3	314.79	242.33	74°25'40"	293.12	N50°57'37"W

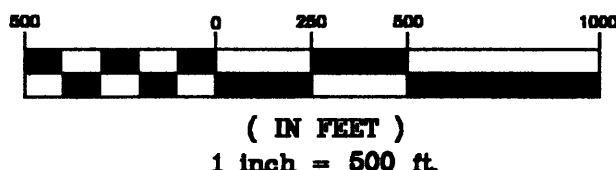
BASIS OF BEARING

Bearings are based on NAD 83, Ohio State Plane
Coordinate System, South Zone, Grid North, as
per GPS Observations of Muskingum County GPS
Monuments.

PARCEL NO.

Part of: 06-80-27-09-000 (±59.45 ac.)
Part of: 06-80-27-08-000 (±31.23 ac.)
Part of: 06-80-34-02-000 (±17.12 ac.)

GRAPHIC SCALE



REFERENCES

DR 1631-424
DR 1659-72
DR 1130-577
DR 558-722
DR 568-471
DR 685-228

DESCRIPTION APPROVED
FOR AUDITOR'S TRANSFER
BY

11-3-2003

Jack L. Newcome
Reg. Surveyor No. 7321

Date

Project No.: AEP-424



Linn Engineering, Inc. 740-462-7434
Civil Engineering Consultants
P.O. Box 2088 Zanesville, Ohio 43702-2088



Linn Engineering, Inc.

Civil Engineering Consultants

740-452-7434 • 1-800-991-7434 • FAX 740-452-5198

534 Market Street • P.O. Box 2086 • Zanesville, Ohio 43702-2086

TRACT 42

OFFICE COPY
NOT RECORDABLE

Situated in the State of Ohio, County of Muskingum, Township of Blue Rock, bounded and described as follows:

Being part of the Southwest Quarter and South Half of Section 27 and part of the North Half of Section 34, Township 12, Range 12 of Blue Rock Township of Congress Lands East of the Scioto River, also being part of lands now owned by Ohio Power Company as described in Muskingum County Deed Reference 568-471, 648-202 and 687-241, and more particularly described as follows:

Beginning for reference at an iron pin found at the Southeast Corner of the Southeast Quarter of Section 27, Blue Rock Township, Township 12, Range 12 of the Congress Lands East of the Scioto River;

thence along the south line of said Section 27 North 87 degrees 28 minutes 35 seconds West for a distance of 1076.46 feet to the centerline of Peyton Road (CR-231) to the principal place of beginning;

thence along the said centerline of Peyton Road the following six courses:

- 1) South 03 degrees 42 minutes 34 seconds East for a distance of 33.37 feet to a point;
- 2) South 04 degrees 27 minutes 28 seconds West for a distance of 92.90 feet to a point;
- 3) a curve to the right having a radius of 520.00 feet and an arc length of 172.31 feet, being subtended by a chord bearing South 16 degrees 50 minutes 37 seconds West for a distance of 171.52 feet to a point;
- 4) South 38 degrees 50 minutes 02 seconds West for a distance of 86.04 feet to a point;
- 5) South 48 degrees 34 minutes 02 seconds West for a distance of 291.59 feet to a point;
- 6) South 43 degrees 42 minutes 12 seconds West for a distance of 593.82 feet to a point at the intersection with the centerline of Roberts Road (TR-466);

thence along the said centerline of Roberts Road the following eleven courses:

- 1) North 43 degrees 45 minutes 25 seconds West for a distance of 120.30 feet to a point;
- 2) a curve to the right having a radius of 898.00 feet and an arc length of 340.83 feet, being subtended by a chord bearing North 31 degrees 09 minutes 58 seconds West for a distance of 338.79 feet to a point;
- 3) North 16 degrees 18 minutes 33 seconds West for a distance of 532.70 feet to a point;
- 4) a curve to the left having a radius of 242.33 feet and an arc length of 314.79 feet, being subtended by a chord bearing North 50 degrees 57 minutes 37 seconds West for a distance of 293.12 feet to a point;
- 5) South 88 degrees 28 minutes 01 seconds West for a distance of 265.12 feet to a point;
- 6) North 87 degrees 31 minutes 43 seconds West for a distance of 181.51 feet to a point;
- 7) North 83 degrees 53 minutes 14 seconds West for a distance of 110.53 feet to a point;
- 8) North 81 degrees 20 minutes 45 seconds West for a distance of 150.95 feet to a point;
- 9) North 87 degrees 09 minutes 33 seconds West for a distance of 646.33 feet to a point;
- 10) North 82 degrees 01 minutes 03 seconds West for a distance of 50.70 feet to a point;
- 11) North 75 degrees 19 minutes 32 seconds West for a distance of 13.16 feet to a point;

thence leaving Roberts Road and through lands now owned by Ohio Power Company (DR 568-471) the following four courses;

✓

- 1) North 03 degrees 00 minutes 19 seconds East for a distance of 367.84 feet to an iron pin set, passing an iron pin set at 13.00 feet;
- 2) North 39 degrees 22 minutes 54 seconds East for a distance of 606.10 feet to an iron pin set;
- 3) North 39 degrees 56 minutes 02 seconds East for a distance of 468.28 feet to an iron pin set;
- 4) North 60 degrees 54 minutes 51 seconds East for a distance of 137.58 feet to an iron pin set on the south line of lands now owned by A.I. Fritter and R.J. Hughes (OR 1631-424);

thence along said Fritter and Hughes south line South 87 degrees 24 minutes 07 seconds East for a distance of 525.00 feet to an iron pin found on the southeast corner of said lands;

thence along said Fritter and Hughes east line North 03 degrees 06 minutes 41 seconds East for a distance of 330.00 feet to an iron pin set on the southwest corner of lands now owned by N. Betz (OR 1659-72);

thence along said Betz's south line the following four courses:

- 1) South 86 degrees 57 minutes 25 seconds East for a distance of 841.50 feet to an iron pin set;
- 2) South 03 degrees 02 minutes 35 seconds West for a distance of 99.00 feet to an iron pin set;
- 3) South 73 degrees 02 minutes 45 seconds East for a distance of 973.50 feet to an iron pin set;
- 4) South 19 degrees 32 minutes 45 seconds East for a distance of 272.94 feet to an iron pin found on the northwest corner of lands now owned by C.L. Wilkins (OR 1779-689);

thence along said Wilken's west line the following two courses:

- 1) South 36 degrees 05 minutes 05 seconds West for a distance of 733.26 feet to an iron pin set;
- 2) South 01 degrees 14 minutes 22 seconds East for a distance of 462.00 feet to an iron pin set on the section line;

thence along the section line North 87 degrees 28 minutes 35 seconds West 15.33 feet to the centerline of Peyton Road and the principal place of beginning;

containing 107.80 acres, more or less, subject to all legal road right of ways and applicable easements, written or implied.

Iron pins set are 5/8 inch diameter by 30 inch long rebar with plastic identification caps.

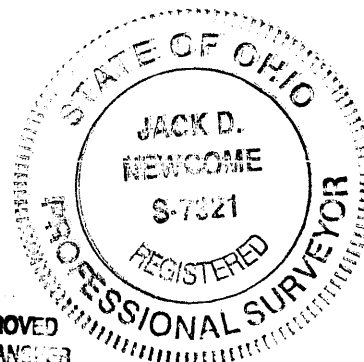
Bearings are based on NAD 83, Ohio State Plane Coordinate System, South Zone, Grid North, as per GPS observations of Muskingum County GPS Monuments.

This description is written based on a survey completed October 22, by Jack D. Newcome, Reg. No. 7321.

Jack D. Newcome
Jack D. Newcome, Reg. No. 7321 12-02-03
Date

PARCEL NO.:

Part of: 06-80-27-09-000 (59.45 Ac.)
Part of: 06-80-27-08-000 (31.23 Ac.)
Part of: 06-80-34-02-000 (17.12 Ac.)



DESCRIPTION APPROVED
FOR AUDITOR'S TRANSFER
BY *A. L. Swinehart*

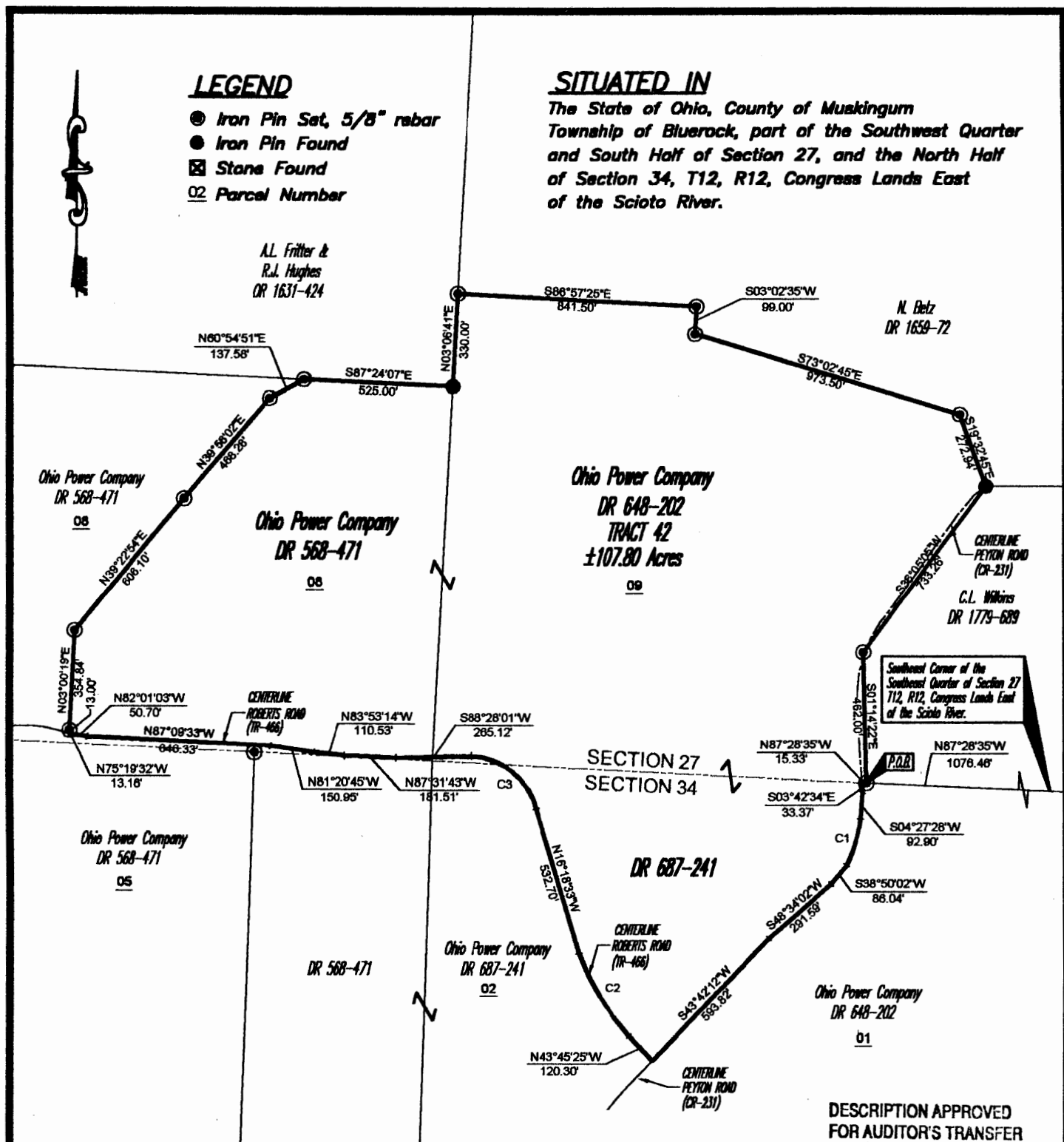
11-3-2003 KB

LEGEND

- Iron Pin Set, 5/8" rebar
- Iron Pin Found
- ☒ Stone Found
- 02 Parcel Number

SITUATED IN

The State of Ohio, County of Muskingum
Township of Bluerock, part of the Southwest Quarter
and South Half of Section 27, and the North Half
of Section 34, T12, R12, Congress Lands East
of the Scioto River.

**CURVE TABLE**

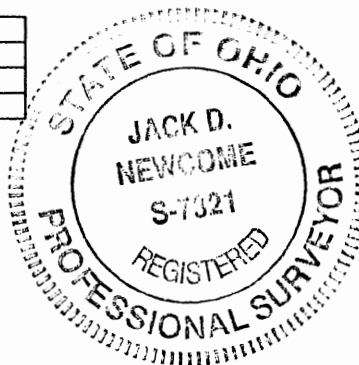
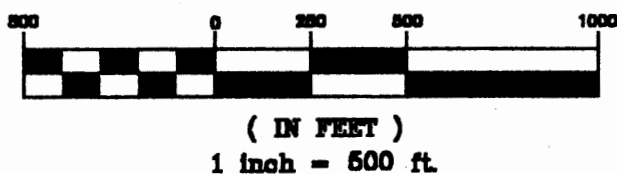
CURVE	LENGTH	RADIUS	DELTA	CHORD	BEARING
C1	172.31	520.00	18°59'10"	171.52	S16°50'37"W
C2	340.83	898.00	21°44'47"	338.79	N31°09'58"W
C3	314.79	242.33	74°25'40"	293.12	N50°57'37"W

BASIS OF BEARING

Bearings are based on NAD 83, Ohio State Plane
Coordinate System, South Zone, Grid North, as
per GPS Observations of Muskingum County GPS
Monuments.

PARCEL NO.

Part of: 06-80-27-08-000 (±59.45 ac.)
Part of: 06-80-27-08-000 (±31.23 ac.)
Part of: 06-80-34-02-000 (±17.12 ac.)

GRAPHIC SCALE**REFERENCES**

DR 1631-424
DR 1659-72
DR 1130-577
DR 648-202
DR 568-471
DR 687-241

DESCRIPTION APPROVED
FOR AUDITOR'S TRANSFER
BY A.L. Swinchaer
11-3-2003 KS

Jack D. Newcome
Reg. Surveyor No. 7321

12-02-03
Date

Project No.: AEP-424



Linn Engineering, Inc. 740-458-7434
Civil Engineering Consultants
P.O. Box 2086 Zanesville, Ohio 43702-2086