



Linn Engineering, Inc.

Civil Engineering Consultants

740-452-7434 • 1-800-991-7434 • FAX 740-452-5198

534 Market Street • P.O. Box 2086 • Zanesville, Ohio 43702-2086

ADDRESS N/A ✓

TRACTS 46/47 - ROBERT MONTGOMERY

OFFICE COPY
NOT RECORDABLE

Situated in the State of Ohio, County of Muskingum, Township of Blue Rock, bounded and described as follows:

Being part of the South Half of Section 27 and part of the North Half of Section 34, Township 12, Range 12 of Blue Rock Township of Congress Lands East of the Scioto River, also being part of lands now owned by Ohio Power Company as described in Muskingum County Deed Reference 568-471 and 685-288, and more particularly described as follows:

Beginning for reference at an iron pin set at the Southwest Corner of the Southwest Quarter of Section 27, Blue Rock Township, Township 12, Range 12 of the Congress Lands East of the Scioto River;

thence along the south line of Section 27 South 87 degrees 16 minutes 12 seconds East 951.02 feet to an iron pin set and the principal place of beginning;

thence through lands now owned by Ohio Power Company (DR 568-471) North 02 degrees 04 minutes 32 seconds East for a distance of 31.95 feet to the centerline of Roberts Road (TR-466);

thence along said centerline of Roberts Road (TR-466) the following fourteen courses:

- 1) North 85 degrees 49 minutes 40 seconds East for a distance of 201.37 feet to a point;
- 2) South 83 degrees 26 minutes 21 seconds East for a distance of 63.19 feet to a point;
- 3) South 75 degrees 19 minutes 32 seconds East for a distance of 99.47 feet to a point;
- 4) South 82 degrees 01 minutes 03 seconds East for a distance of 50.70 feet to a point;
- 5) South 87 degrees 09 minutes 33 seconds East for a distance of 589.36 feet to a point, from which an iron pin set bears South 02 degrees 04 minutes 34 seconds West for a distance of 25.56 feet;
- 6) South 87 degrees 09 minutes 33 seconds East for a distance of 56.98 feet to a point;
- 7) South 81 degrees 20 minutes 45 seconds East for a distance of 150.95 feet to a point;
- 8) South 83 degrees 53 minutes 14 seconds East for a distance of 110.53 feet to a point;
- 9) South 87 degrees 31 minutes 43 seconds East for a distance of 181.51 feet to a point;
- 10) North 88 degrees 28 minutes 01 seconds East for a distance of 265.11 feet to a point;
- 11) a curve to the right having a radius of 242.33 feet and an arc length of 314.79 feet, being subtended by a chord bearing South 50 degrees 57 minutes 37 seconds East for a distance of 293.12 feet to a point;
- 12) South 16 degrees 18 minutes 33 seconds East for a distance of 532.70 feet to a point;
- 13) a curve to the left having a radius of 898.00 feet and an arc length of 340.83 feet, being subtended by a chord bearing South 31 degrees 09 minutes 58 seconds East for a distance of 338.79 feet to a point;
- 14) South 43 degrees 45 minutes 25 seconds East for a distance of 120.30 feet to the intersection with the centerline of Peyton Road (CR 231);

thence along the centerline of Peyton Road the following eleven courses:

- 1) South 43 degrees 42 minutes 12 seconds West for a distance of 122.62 feet to a point;
- 2) South 41 degrees 28 minutes 33 seconds West for a distance of 110.27 feet to a point;

- 3) a curve to the left having a radius of 890.68 feet and an arc length of 200.25 feet, being subtended by a chord bearing South 30 degrees 32 minutes 10 seconds West for a distance of 199.83 feet to a point;
- 4) South 23 degrees 17 minutes 02 seconds West for a distance of 222.91 feet to a point;
- 5) a curve to the left having a radius of 572.50 feet and an arc length of 168.76 feet, being subtended by a chord bearing South 14 degrees 12 minutes 41 seconds West for a distance of 168.15 feet to a point;
- 6) South 05 degrees 24 minutes 50 seconds West for a distance of 250.66 feet to a point;
- 7) South 03 degrees 55 minutes 09 seconds West for a distance of 48.45 feet to a point;
- 8) South 00 degrees 53 minutes 59 seconds West for a distance of 164.20 feet to a point;
- 9) South 06 degrees 17 minutes 11 seconds East for a distance of 107.83 feet to a point;
- 10) South 08 degrees 30 minutes 40 seconds East for a distance of 148.79 feet to a point;
- 11) South 06 degrees 49 minutes 14 seconds East for a distance of 170.35 feet to a point on the north line of lands now owned by D. Peterson (DR 1134-643);

thence along said Peterson's north line North 87 degrees 24 minutes 10 seconds West for a distance of 2131.49 feet to an iron pin set, passing an iron pin found at 25.00 feet and an iron pin offset 0.50 feet right at 1131.49 feet;

thence through said Ohio Power Company lands North 02 degrees 04 minutes 32 seconds East for a distance of 2634.62 feet to the principal place of beginning;

containing 130.08 acres, more or less, of which 129.08 acres are in Section 34 and 1.00 acre is in Section 27, subject to all legal road right of ways and applicable easements, written or implied.

Iron pins set are 5/8 inch diameter by 30 inch long rebar with plastic identification caps.

Bearings are based on NAD 83, Ohio State Plane Coordinate System, South Zone, Grid North, as per GPS observations of Muskingum County GPS Monuments.

This description is written based on a survey completed October 22, by Jack D. Newcome, Reg. No. 7321.

Jack D. Newcome, Reg. No. 7321

Date

DESCRIPTION APPROVED
FOR AUDITOR'S TRANSFER
BY A. L. Swinehart
11-19-2003 CS

PARCEL NO.:

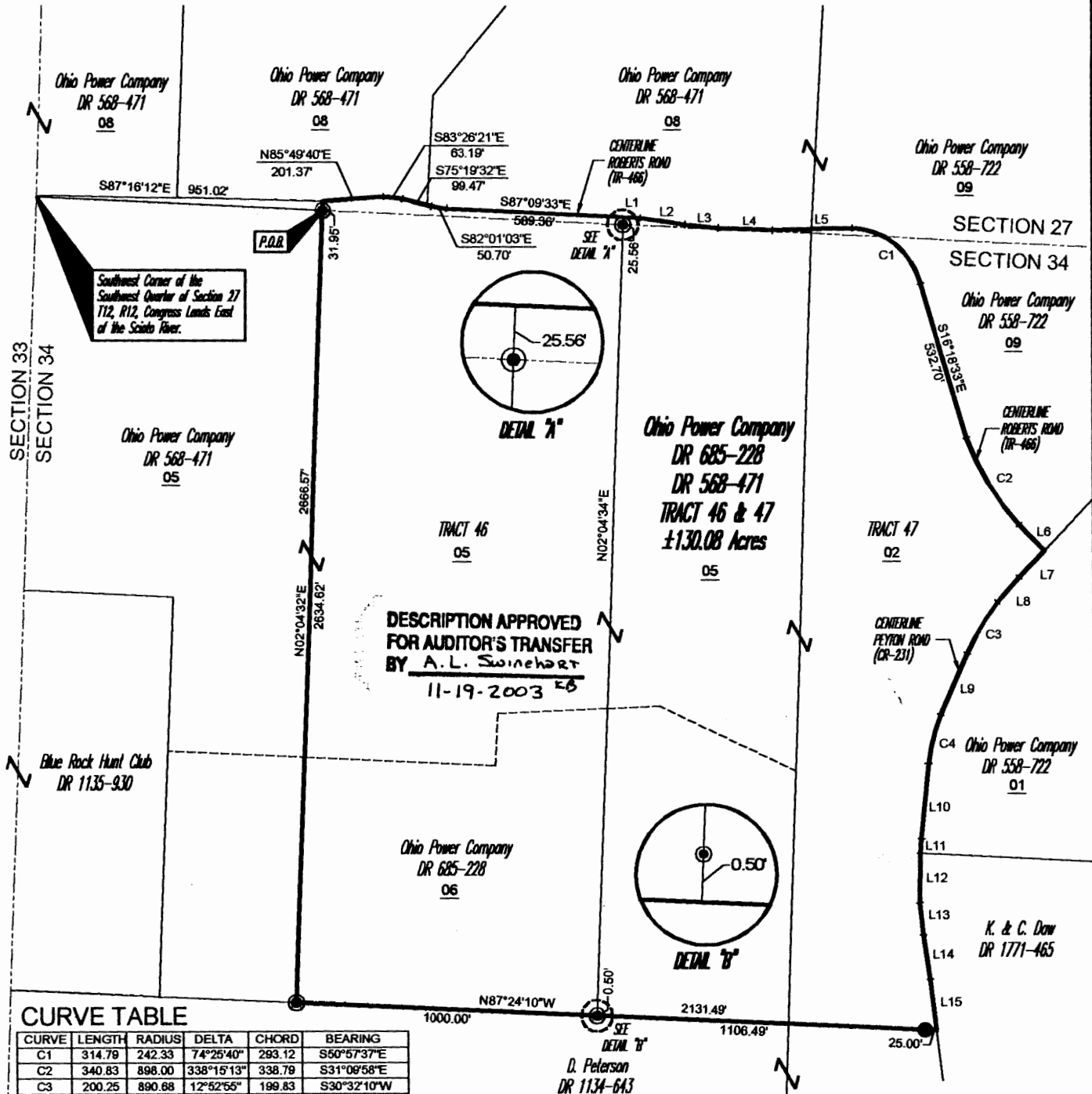
Part of: 06-80-34-02-000 (30.48 Ac.)
Part of: 06-80-34-05-000 (64.30 Ac.)
Part of: 06-80-34-06-000 (34.30 Ac.)
Part of: 06-80-27-08-000 (0.90 Ac.)
Part of: 06-80-27-09-000 (0.10 Ac.)

SITUATED IN

The State of Ohio, County of Muskingum, Township of Blue Rock, and being part of the Southwest and Southeast Quarters of Section 27, and part of the Northwest and Northeast Quarters of Section 34, T12, R12, Congress Lands East of the Scioto River.

LEGEND

- Iron Pin Set, 5/8" rebar
- Iron Pin Found
- ☒ Stone Found
- 02 Parcel Number



CURVE TABLE

CURVE	LENGTH	RADIUS	DELTA	CHORD	BEARING
C1	314.79	242.33	74°25'40"	293.12	S50°57'37"E
C2	340.83	898.00	338°15'13"	338.79	S31°09'58"E
C3	200.25	890.88	12°52'55"	199.83	S30°32'10"W
C4	188.78	572.50	16°53'23"	168.15	S14°12'41"W

BASIS OF BEARING

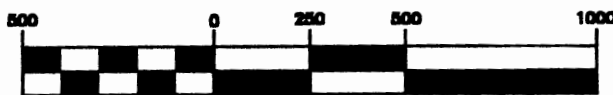
Bearings are based on NAD 83, Ohio State Plane Coordinate System, South Zone, Grid North, as per GPS Observations of Muskingum County GPS Monuments.

PARCEL NO.

- Part of: 06-80-34-05-000 (±64.30 ac.)
- Part of: 06-80-34-06-000 (±34.30 ac.)
- Part of: 06-80-27-08-000 (±0.90 ac.)
- Part of: 06-80-27-09-000 (±0.10 ac.)
- Part of: 06-80-34-02-000 (±30.48 ac.)

129.08 Acres in Section 34 and 1.00 Acre in Section 27

GRAPHIC SCALE



(IN FEET)
1 inch = 500 ft.

REFERENCES

- OR 1631-424
- DR 1659-72
- DR 1130-577
- DR 558-722
- DR 568-471
- DR 685-228

LINE TABLE

LINE	LENGTH	BEARING
L1	56.98	S87°09'33"E
L2	150.95	S81°20'45"E
L3	110.53	S83°53'14"E
L4	181.51	S87°31'43"E
L5	285.11	N88°28'01"E
L6	120.30	S43°45'25"E
L7	122.62	S43°42'12"W
L8	110.27	S41°28'33"W
L9	222.81	S23°17'02"W
L10	250.88	S05°24'50"W
L11	48.45	S03°55'09"W
L12	184.35	S00°53'59"W
L13	107.8	S06°17'11"E
L14	128.74	S08°30'40"E
L15	70.35	S06°49'14"E

Jack A. Newcome
Registered Surveyor No. 7321

Project No.: AEP-424



Linn Engineering, Inc. 740-452-7434
Civil Engineering Consultants
P.O. Box 2086 Zanesville, Ohio 43702-2086