

# ALAN DONAKER SURVEYING

**Alan Donaker, P.S.**

**19849 TR 383**

**Walhonding, OH 43843**

**Fax: (740) 327-1083**

**Phone: (740) 327-7001**

Being 137.454 acres, more or less, in Section 3, in the Second Quarter of Township 3 North, Range 8 West, United States Military Lands, in Township of Cass, in the County of Muskingum, in the State of Ohio, conveyed to Kenneth W. Jr. Moore, DR 719-37 (part, 1<sup>st</sup> and 2<sup>nd</sup> parcels, all parcel 3) and Kenneth Moore, Jr., DR 1032-567 (part), Parcel No. 10-04-03-01-000 (all, 39.723 acres), Parcel No. 10-04-03-02-000 (part 33.436 acres), Parcel No. 10-04-03-03-000 (part, 64.262 acres) and Parcel No. 10-04-03-04-000 (part, 0.033 acres) and more particularly described as follows:

Commencing at a  $\frac{5}{8}$ " rebar set at the Northwest corner of Section 3, said rebar being the TRUE POINT OF BEGINNING:

thence, with the South line of Coshocton County the following 2 courses:

1. thence, N. 85° 31' 16" E. a distance of 1214.62' to a  $\frac{5}{8}$ " rebar found;
2. thence, N. 86° 27' 10" E. a distance of 1419.18' to a stone found;

thence, with the property line of Lori K. Hudson, Custodian, DR 2065-114, the following 2 courses:

1. thence, S. 04° 11' 15" E. a distance of 2625.18' to a tree stump ( $\frac{5}{8}$ " rebar found S. 86° 16' 50" W. a distance of 5.00');;
2. thence, S. 03° 49' 52" E. a distance of 22.89' to a point in the centerline of Cass Irish Ridge Road;

thence, with the centerline of Cass Irish Ridge Road, the following 24 courses:

1. thence, with a curve to the right, the curve data for which is: D = 23° 29' 43", R = 280.34', L = 114.96', Ch. B. N. 68° 30' 49" W., Ch. L. 114.16' to a point;
2. thence, N. 56° 45' 57" W. a distance of 267.87' to a point;
3. thence, with a curve to the left, the curve data for which is: D = 69° 43' 15", R = 267.73', L = 325.80', Ch. B. S. 88° 22' 25" W., Ch. L. 306.06' to a point;
4. thence, S. 53° 30' 47" W. a distance of 298.40' to a point;
5. thence, with a curve to the right, the curve data for which is: D = 22° 59' 07", R = 295.10', L = 118.39', Ch. B. S. 65° 00' 21" W., Ch. L. 117.59' to a point;
6. thence, S. 76° 29' 54" W. a distance of 38.64' to a point;
7. thence, with a curve to the right, the curve data for which is: D = 57° 28' 45", R = 145.88', L = 146.35', Ch. B. N. 74° 45' 43" W., Ch. L. 140.29' to a point;
8. thence, N. 46° 01' 21" W. a distance of 10.88' to a point;
9. thence, N. 25° 10' 25" W. a distance of 35.30' to a point;
10. thence, with a curve to the right, the curve data for which is: D = 39° 15' 20", R = 255.17', L = 174.82', Ch. B. N. 05° 32' 45" W., Ch. L. 171.43' to a point;
11. thence, N. 14° 04' 55" E. a distance of 192.98' to a point;
12. thence, N. 09° 34' 22" E. a distance of 46.24' to a point;
13. thence, with a curve to the left, the curve data for which is: D = 90° 40' 02", R = 88.17', L = 139.52', Ch. B. N. 35° 45' 40" W., Ch. L. 125.41' to a point;
14. thence, N. 81° 05' 41" W. a distance of 29.92' to a point;
15. thence, N. 89° 02' 26" W. a distance of 36.94' to a point;
16. thence, S. 86° 05' 38" W. a distance of 58.19' to a point;
17. thence, S. 83° 10' 41" W. a distance of 358.89' to a point;

18. thence, with a curve to the left, the curve data for which is:  $D = 18^{\circ} 36' 31''$ ,  
 $R = 565.09'$ ,  $L = 183.53'$ , Ch. B. S.  $73^{\circ} 52' 26''$  W., Ch. L. 182.72' to a point;
19. thence, S.  $64^{\circ} 34' 10''$  W. a distance of 195.60' to a point;
20. thence, with a curve to the right, the curve data for which is:  $D = 56^{\circ} 52' 11''$ ,  
 $R = 342.27'$ ,  $L = 339.73'$ , Ch. B. N.  $86^{\circ} 59' 44''$  W., Ch. L. 325.95' to a point;
21. thence, N.  $58^{\circ} 33' 39''$  W. a distance of 34.67' to a point;
22. thence, N.  $58^{\circ} 33' 39''$  W. a distance of 67.21' to a point;
23. thence, N.  $56^{\circ} 26' 15''$  W. a distance of 76.42' to a point;
24. thence, N.  $53^{\circ} 58' 49''$  W. a distance of 201.01' to a point;

thence, with the property line of Charles H. and Jill Baumgardner Fry, DR 858-340, the following 2 courses:

1. thence, N.  $04^{\circ} 06' 52''$  W. a distance of 30.00' to a  $\frac{5}{8}$ " rebar set;
2. thence, N.  $04^{\circ} 06' 52''$  W. a distance of 1853.28' to the TRUE POINT OF BEGINNING, containing 137.454 acres, more or less, including public road right-of-way and is subject to all easements, rights-of-way, or restrictions, whether recorded or implied.

Bearings are based on DR 1137-423 and are for angular calculations only.

All  $\frac{5}{8}$ " rebars set are 30" long with plastic cap marked "AMD 8050".

Pertinent Documents: Tax Map and all Deeds and Plats shown

Surveys by: Earl R. Donaker, W.J. Biedenbach, Malcolm A. Grove, Alan Donaker

Description and plat by Alan Donaker, Professional Surveyor, #8050, from a survey of the premises on May 7, in the year of our Lord Two Thousand Thirteen.

**OFFICE COPY  
NOT RECORDABLE**



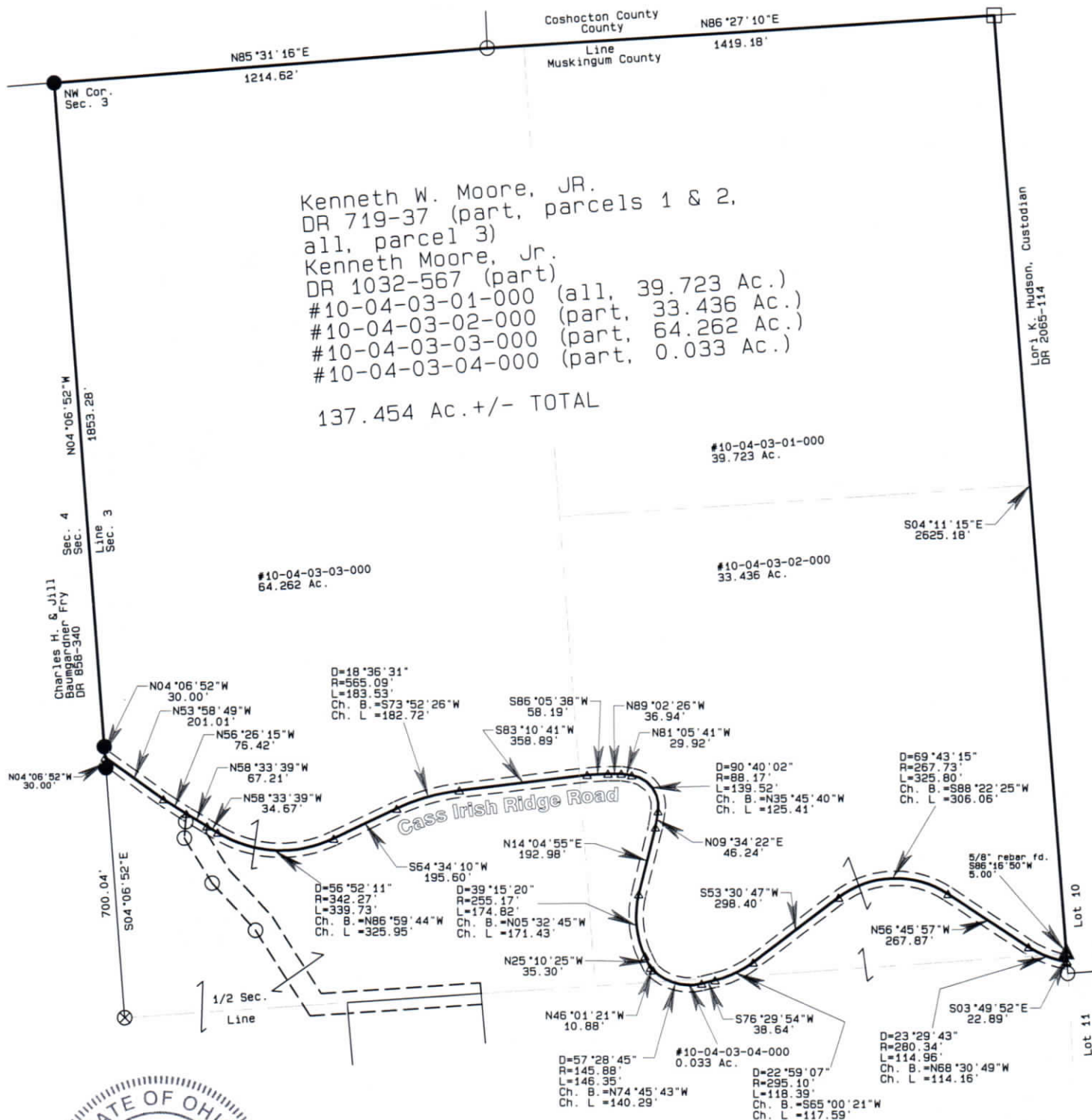
DESCRIPTION  
APPROVED  
By: *[Signature]* 5/6/2016

Bearings are based on  
 OR 1137-423 and are for  
 angular calculations only

DESCRIPTION  
APPROVED

By: 245-1/01/2016

- All 5/8" rebars set are 30" long with plastic cap marked "AMD 8050"
- 5/8" rebar found
- ⊗ 1/2" rebar found
- Stone found
- ▲ Tree Stump
- △ Point



Kenneth W. Moore, Jr.  
DR 719-37 &  
Kenneth Moore, Jr.  
DR 1032-567  
137.454 Ac. +/-  
Sec. 3, Second Qtr., T3N, R8W  
United States Military Lands  
Cass Township  
Muskingum County, Ohio  
Date: May 7, 2013

GRAPHIC SCALE 1"=400'



I, Alan Donaker, P.S. 8050, hereby  
certify this plat to represent a boundary  
survey pursuant to Chapter 4733.37  
Ohio Administrative Code and to be  
correct to the best of my knowledge  
and belief.