



Linn Engineering, Inc.

Civil Engineering Consultants

740-452-7434 • 1-800-991-7434

534 Market Street • P.O. Box 2086 • Zanesville, Ohio 43702-2086

**THE LONGABERGER COMPANY
DEED RECORD 1135-59
OFFICIAL RECORD 2423, PAGE 911
LOOP ROAD (PRIVATE)
+/-16.795 ACRES**

Situated in the State of Ohio, County of Muskingum, Townships of Cass and Jackson, bounded and described as follows:

Being a part of Section 6 and a part of the North Half of Section 15, Township 3, Range 8, Cass Township, and a part of the East Half of Lot 21, Township 3, Range 9, Jackson Township, United States Military Lands, being part of lands now owned by The Longaberger Company as the same is described in Muskingum County Deed Record 1135-59 and Official Record 2423, Page 911, and being more particularly described as follows:

Beginning for reference at a stone found at the southwest corner of Section 6, Township 3, Range 8, United States Military Lands;

thence along the line common to Lot 20 Jackson Township and Section 6 Cass Township South 01 degrees 58 minutes 09 seconds West 870.49 feet to an iron pin found on the north line of Loop Road (private) and the principal place of beginning;

thence along the northwesterly line of said Loop Road, the following twenty-one courses:

- 1) North 65 degrees 54 minutes 42 seconds East 71.37 feet to an iron pin found;
- 2) North 84 degrees 11 minutes 13 seconds East 166.76 feet to an iron pin found;
- 3) North 73 degrees 36 minutes 17 seconds East 1070.74 feet to an iron pin found on the southeast corner of lands now owned by Fanatics Ohio Property Holdings, Inc. (OR 2426-693);
- 4) North 73 degrees 36 minutes 17 seconds East 148.74 feet to an iron pin found;
- 5) a curve to the left having a radius of 759.99 feet, an arc length of 626.76 feet, a chord bearing of North 49 degrees 58 minutes 45 seconds East, and a chord length of 609.15 feet to an iron pin found;
- 6) North 26 degrees 21 minutes 34 seconds East 872.92 feet to an iron pin found on said Fanatic's northeast corner;
- 7) North 26 degrees 21 minutes 34 seconds East 93.19 feet to an iron pin found;
- 8) a curve to the left having a radius of 760.00 feet, an arc length of 194.71 feet, a chord bearing of North 19 degrees 00 minutes 54 seconds East, and a chord length of 194.18 feet to an iron pin found;
- 9) a compound curve to the left having a radius of 760.00 feet, an arc length of 167.42 feet, a chord bearing of North 05 degrees 21 minutes 56 seconds East, and a chord length of 167.08 feet to an iron pin found;
- 10) North 00 degrees 56 minutes 43 seconds West 276.92 feet to an iron pin found on the exterior line of a private service road;

- 11) North 00 degrees 56 minutes 43 seconds West 90.74 feet to an iron pin found on the interior line of a private service road;
- 12) North 00 degrees 56 minutes 43 seconds West 314.69 feet to an iron pin found;
- 13) a curve to the right having a radius of 540.00 feet, an arc length of 261.39 feet, a chord bearing of North 12 degrees 47 minutes 51 seconds East, and a chord length of 258.85 feet to a point;
- 14) North 26 degrees 48 minutes 22 seconds East 365.05 feet to an iron pin found on the interior line of said private service road;
- 15) North 26 degrees 48 minutes 22 seconds East 51.97 feet to a railroad spike found on the exterior line of said private service road;
- 16) North 26 degrees 48 minutes 22 seconds East 568.71 feet to an iron pin found on the northeast corner of lands now owned by Outerlimits, LLC (OR 2656-531);
- 17) North 26 degrees 48 minutes 22 seconds East 658.79 feet to an iron pin found;
- 18) a curve to the right having a radius of 330.07 feet, an arc length of 455.69 feet, a chord bearing of North 66 degrees 21 minutes 21 seconds East, and a chord length of 420.35 feet to a point;
- 19) a compound curve to the right having a radius of 330.00 feet, an arc length of 58.04 feet, a chord bearing of South 68 degrees 58 minutes 44 seconds East, and a chord length of 57.97 feet to a pk nail found on the southwest corner of lands now owned by INT Business Company, LLC (OR 2638-103);
- 20) South 63 degrees 56 minutes 25 seconds East 506.94 feet to an iron pin found on said INT Business Company's southeast corner;
- 21) South 63 degrees 56 minutes 25 seconds East 575.97 feet to a point on the centerline of Raiders Road (CR-616), passing a railroad spike found at 535.84 feet;

thence along said centerline of Raiders Road, along a curve to the left having a radius of 1909.87 feet, an arc length of 93.11 feet, a chord bearing of South 29 degrees 22 minutes 20 seconds West, and a chord length of 93.10 feet to a point on the southeasterly line of said Loop Road;

thence along said Loop Road the following twenty-six courses:

- 1) North 62 degrees 03 minutes 21 seconds West 44.89 feet to an iron pin found;
- 2) North 47 degrees 12 minutes 35 seconds West 41.43 feet to an iron pin found on the interior line of said private service road;
- 3) North 63 degrees 54 minutes 50 seconds West 985.36 feet to an iron pin found;
- 4) a curve to the left having a radius of 258.00 feet, an arc length of 402.15 feet, a chord bearing of South 71 degrees 25 minutes 50 seconds West, and a chord length of 362.66 feet to a an iron pin found;
- 5) South 26 degrees 46 minutes 35 seconds West 702.11 feet to a pk nail found;
- 6) South 26 degrees 46 minutes 35 seconds West 268.27 feet to a point;
- 7) South 26 degrees 46 minutes 35 seconds West 677.64 feet to an iron pin found;
- 8) a curve to the left having a radius of 457.50 feet, an arc length of 204.25 feet, a chord bearing of South 12 degrees 50 minutes 56 seconds West, and a chord length of 202.56 feet to an iron pin found;
- 9) South 01 degrees 04 minutes 46 seconds East 672.92 feet to an iron pin found;
- 10) South 03 degrees 05 minutes 12 seconds West 130.38 feet to a pk nail found on the north line of a private service road;
- 11) a curve to the right having a radius of 897.50 feet, an arc length of 82.04 feet, a chord bearing of South 09 degrees 51 minutes 45 seconds West, and a chord length of 82.01 feet to a pk nail found;
- 12) a curve to the right having a radius of 897.50 feet, an arc length of 217.18 feet, a chord bearing of South 19 degrees 25 minutes 21 seconds West, and a chord length of 216.65 feet to a point;
- 13) South 26 degrees 21 minutes 17 seconds West 876.75 feet to an iron pin found;
- 14) South 26 degrees 21 minutes 17 seconds West 76.90 feet to an iron pin found;
- 15) a curve to the right having a radius of 839.99 feet, an arc length of 113.66 feet, a chord bearing of South 30 degrees 13 minutes 49 seconds West, and a chord length of 113.57 feet to a point;

- 16) South 87 degrees 19 minutes 19 seconds East 9.37 feet to an iron pin found;
- 17) a curve to the right having a radius of 848.00 feet, an arc length of 589.69 feet, a chord bearing of South 53 degrees 41 minutes 00 seconds West, and a chord length of 577.88 feet to a point;
- 18) South 73 degrees 36 minutes 17 seconds West 1218.68 feet to an iron pin found;
- 19) South 62 degrees 59 minutes 16 seconds West 182.17 feet to an iron pin found;
- 20) South 89 degrees 08 minutes 36 seconds West 98.39 feet to an iron pin found on said Jackson and Cass Township lines;
- 21) North 01 degrees 56 minutes 43 seconds East a distance of 7.32 feet;
- 22) South 85 degrees 04 minutes 25 seconds West 81.14 feet to an iron pin found;
- 23) a curve to the right having a radius of 790.03 feet, an arc length of 639.37 feet, a chord bearing of North 75 degrees 11 minutes 00 seconds West, and a chord length of 622.06 feet to an iron pin found;
- 24) North 51 degrees 59 minutes 55 seconds West 43.79 feet to an iron pin found;
- 25) a curve to the left having a radius of 710.08 feet, an arc length of 445.20 feet, a chord bearing of North 69 degrees 57 minutes 44 seconds West, and a chord length of 437.94 feet to an iron pin found;
- 26) North 87 degrees 55 minutes 25 seconds West 14.66 feet to an iron pin found on the east line of Old Riley Road (TR-95);

thence along said east line of Old Riley Road North 02 degrees 00 minutes 48 seconds East 80.00 feet to an iron pin found on the said northwesterly line of Loop Road;

thence along Loop Road the following five courses:

- 1) South 87 degrees 55 minutes 25 seconds East 14.74 feet to an iron pin found;
- 2) a curve to the right having a radius of 790.08 feet, an arc length of 495.36 feet, a chord bearing of South 69 degrees 57 minutes 37 seconds East, and a chord length of 487.29 feet to an iron pin found;
- 3) South 51 degrees 59 minutes 56 seconds East 43.79 feet to an iron pin found;
- 4) a curve to the left having a radius of 710.00 feet, an arc length of 574.64 feet, a chord bearing of South 75 degrees 11 minutes 06 seconds East, and a chord length of 559.08 feet to an iron pin found;
- 5) North 65 degrees 54 minutes 42 seconds East 105.46 feet to the principal place of beginning,

containing 16.795 acres, more or less, of which 2.287 acres are in Lot 21 Jackson Township, 9.882 acres are in Section 6 Cass Township, and 4.626 acres are in Section 15 Cass Township, subject to all legal road right of ways and applicable easements, written or implied.

Bearings are based on Ohio State Plane Coordinate System, South Zone, NAD 83 as per GPS observations made July 6, 2015.

This description is written based on a survey completed August 12, 2016 by Timothy H. Linn, Reg. No. 7113.

OFFICE COPY
NOT RECORDABLE
 Timothy H. Linn, PS
 Reg. No. 7113

Parcel Nos.
 Part of: 10-04-06-01-000 +/-9.882 ac.
 All of: 10-04-15-03-000 +/-4.626 ac.
 All of: 29-50-01-01-001 +/-2.287 ac.
 Total +/-16.795 ac.

DESCRIPTION
APPROVED
 By *[Signature]*



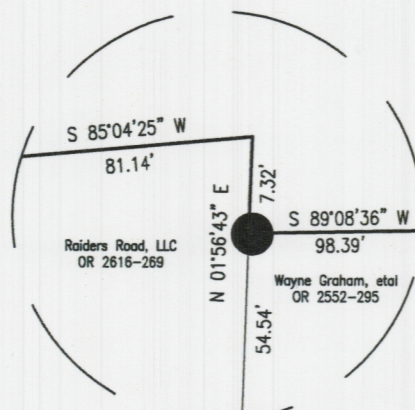
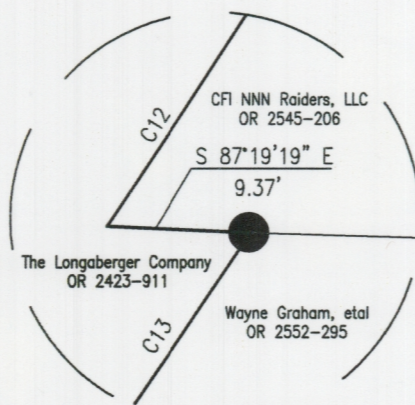
APPROVED
MUSKINGUM COUNTY
PLANNING COMMISSION DIRECTOR

8/20/16
 Date

Fee Paid

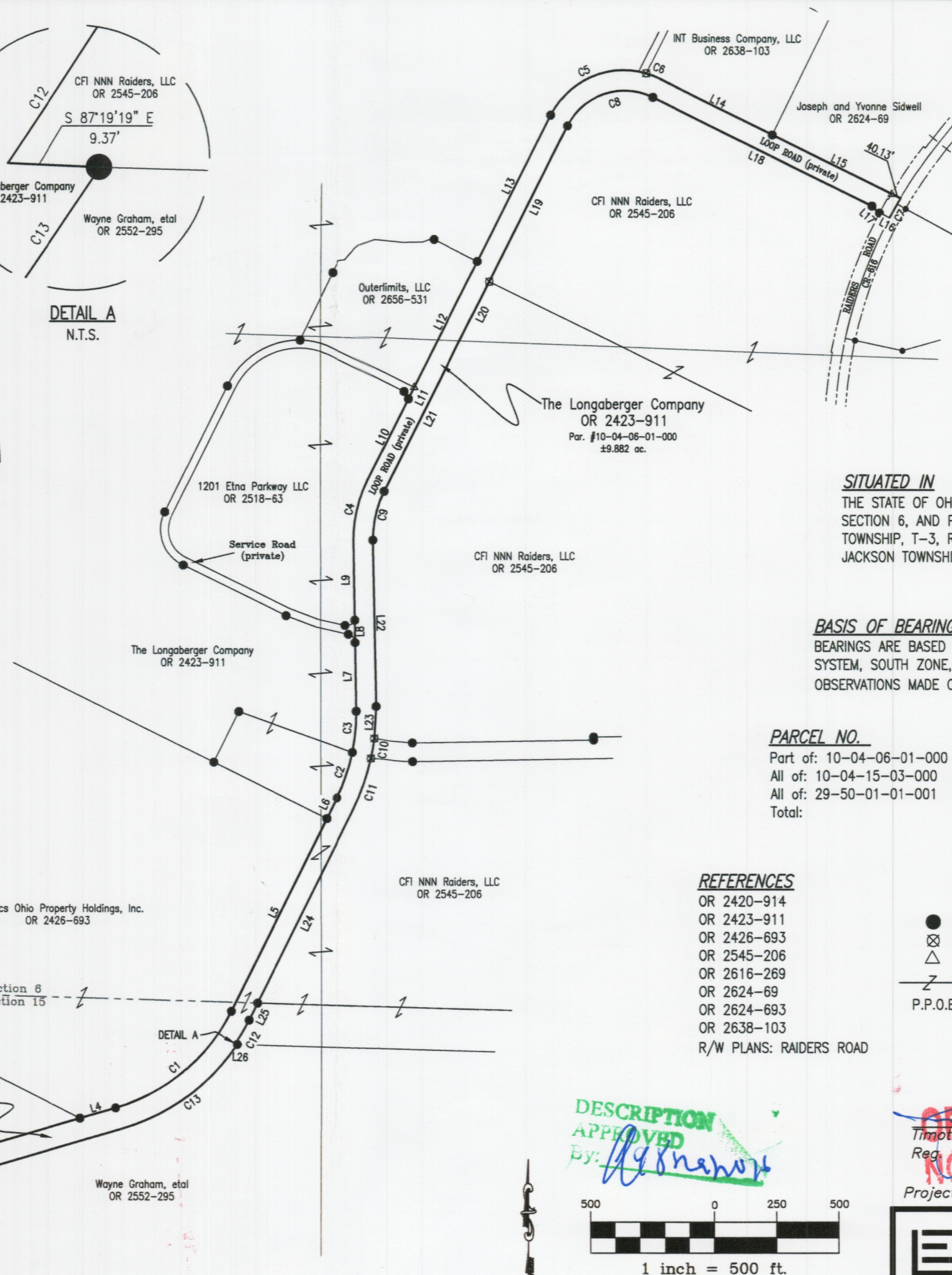
CURVE	RADIUS	ARC LENGTH	CHORD LENGTH	CHORD BEARING
C1	759.99'	626.76'	609.15'	N 49°58'45" E
C2	760.00'	194.71'	194.18'	N 19°00'54" E
C3	760.00'	167.42'	167.08'	N 05°21'56" E
C4	540.00'	261.39'	258.85'	N 12°47'51" E
C5	330.07'	455.69'	420.35'	N 66°21'21" E
C6	330.00'	58.04'	57.97'	S 68°58'44" E
C7	1909.87'	93.11'	93.10'	S 29°22'20" W
C8	258.00'	402.15'	362.66'	S 71°25'50" W
C9	457.50'	204.25'	202.56'	S 12°50'56" W
C10	897.50'	82.04'	82.01'	S 09°51'45" W
C11	897.50'	217.18'	216.65'	S 19°25'21" W
C12	839.99'	113.66'	113.57'	S 30°13'49" W
C13	848.00'	589.69'	577.88'	S 53°41'00" W
C14	790.03'	639.37'	622.06'	N 75°11'00" W
C15	710.08'	445.20'	437.94'	N 69°57'44" W
C16	790.08'	495.36'	487.29'	S 69°57'37" E
C17	710.00'	574.64'	559.08'	S 75°11'06" E

LINE	BEARING	DISTANCE
L1	N 65°54'42" E	71.37'
L2	N 84°11'13" E	166.76'
L3	N 73°36'17" E	1070.74'
L4	N 73°36'17" E	148.74'
L5	N 26°21'34" E	872.92'
L6	N 26°21'34" E	93.19'
L7	N 00°56'43" W	276.92'
L8	N 00°56'43" W	90.74'
L9	N 00°56'43" W	314.69'
L10	N 26°48'22" E	365.05'
L11	N 26°48'22" E	51.97'
L12	N 26°48'22" E	568.71'
L13	N 26°48'22" E	658.79'
L14	S 63°56'25" E	506.94'
L15	S 63°56'25" E	575.97'
L16	N 62°03'21" W	44.89'
L17	N 47°12'35" W	41.43'
L18	N 63°54'50" W	985.36'
L19	S 26°46'35" W	702.11'
L20	S 26°46'35" W	268.27'
L21	S 26°46'35" W	677.64'
L22	S 01°04'46" E	672.92'
L23	S 03°05'12" W	130.38'
L24	S 26°21'17" W	876.75'
L25	S 26°21'17" W	76.90'
L26	S 87°19'19" E	9.37'
L27	S 73°36'17" W	1218.68'
L28	S 62°58'16" W	182.17'
L29	S 89°08'36" W	98.39'
L30	N 01°56'43" E	7.32'
L31	S 85°04'25" W	81.14'
L32	N 51°59'55" W	43.79'
L33	N 87°55'25" W	14.66'
L34	N 02°00'48" E	80.00'
L35	S 87°55'25" E	14.74'
L36	S 51°59'56" E	43.79'
L37	N 65°54'42" E	105.46'



DETAIL A
N.T.S.

DETAIL B
N.T.S.



APPROVED
MUSKINGUM COUNTY
PLANNING COMMISSION DIRECTOR

8/30/16 Date Fee Paid

SITUATED IN
THE STATE OF OHIO, COUNTY OF MUSKINGUM, AND BEING PART OF SECTION 6, AND PART OF THE NORTH HALF OF SECTION 15, CASS TOWNSHIP, T-3, R-8; AND PART OF THE EAST HALF OF LOT 21, JACKSON TOWNSHIP, T-3, R-9, UNITED STATES MILITARY LANDS.

BASIS OF BEARING
BEARINGS ARE BASED ON OHIO STATE PLANE COORDINATE SYSTEM, SOUTH ZONE, NAD83, GRID NORTH, AS PER OBSERVATIONS MADE ON 7/6/15.

PARCEL NO.	TOTAL	R/W
Part of: 10-04-06-01-000	±9.882 ac.	±0.092 ac.
All of: 10-04-15-03-000	±4.626 ac.	±0.000 ac.
All of: 29-50-01-01-001	±2.287 ac.	±0.000 ac.
Total:	±16.795 ac.	±0.092 ac.

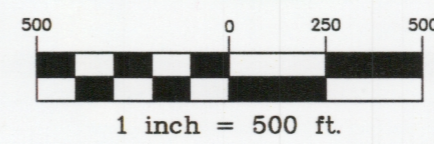
REFERENCES
OR 2420-914
OR 2423-911
OR 2426-693
OR 2545-206
OR 2616-269
OR 2624-69
OR 2624-693
OR 2638-103
R/W PLANS: RAIDERS ROAD

LEGEND

- IRON PIN FOUND
- ⊗ PK NAIL FOUND
- △ RAILROAD SPIKE FOUND
- Z- PROPERTY HOOK
- P.P.O.B. PRINCIPAL PLACE OF BEGINNING



DESCRIPTION
APPROVED
By: [Signature]



OFFICE COPY
NOT RECORDABLE
Timothy H. Linn, PS
Reg. Surveyor No. 7113
Project No.: LONG-595 2016

Linn Engineering, Inc.
Civil Engineering Consultants
P.O. Box 2086 Zanesville, Ohio 43702-2086
740-452-7434

Legal Description for 573.12 Acres in Cass Township of Longaberger Lands

Situated in the State of Ohio, County of Muskingum, Township of Cass, and being part of the Southwest Quarter of Section 4, part of the Southeast Quarter of Section 5, part of the West Half of Section 7, part of the North and South half of Section 6, and part of the North Half of Section 15, Township 3, Range 8, United States Military Lands, and being part of the lands presently owned by The Longaberger Company, as per DR 1081-636, DR 1007-526, and DR 1063-125, and being more particularly described as follows:

Beginning for reference at the Southeast Corner of Section 5, Township 3, Range 8, United States Military Lands; Thence along the section line between sections 6, and 7, South 00 degrees 06 minutes 14 seconds East, 40.14 feet to a point, and the principal place of beginning;

Thence leaving said section line and along the north line of lands presently owned by the Ohio Power Company, (DR 1085-586), North 78 degrees 59 minutes 18 seconds West for a distance of 268.75 feet to a point on the south right of way of new State Route 16;

Thence along said right of way the following three courses:

- 1.) North 58 degrees 20 minutes 46 seconds East for a distance of 132.62 feet to an iron pin found;
- 2.) North 60 degrees 28 minutes 06 seconds East for a distance of 382.00 feet to a point;
- 3.) North 68 degrees 33 minutes 45 seconds East for a distance of 419.33 feet to a pipe found on the east line of lands presently owned by J. S. and S. Y. Sidwell, (DR 612-144);

Thence along said Sidwell lands, (DR 612-144, and OR 1519-144), South 15 degrees 18 minutes 53 seconds East for a distance of 307.22 feet to an iron pin found south of the vacated Brill Road, and the northwest corner of lands presently owned by E. L. and D. L. Fitzgerald, (DR 549-599);

Thence along said Fitzgerald lands, South 37 degrees 41 minutes 14 seconds East for a distance of 22.00 feet to a monument found;

Thence continuing along said Fitzgerald lands South 37 degrees 42 minutes 24 seconds East, for a distance of 617.70 feet to a point on the north line of lands presently owned by C. L. Fitzgerald, (OR 1696-386), passing a monument found at 498.51 feet;

Thence along said Fitzgerald lands the following three courses:

- 1.) South 43 degrees 02 minutes 19 seconds West for a distance of 204.41 feet to a point;
- 2.) South 40 degrees 30 minutes 16 seconds West for a distance of 489.12 feet to a point;
- 3.) South 51 degrees 23 minutes 43 seconds East for a distance of 2077.08 feet to a point on the west line of lands presently owned by L. H. Knicely (DR 633-257), passing a stone found at 7.08 feet, and a pipe found at 1852.47 feet;

Thence along said Knicely lands the following two courses:

- 1.) South 40 degrees 16 minutes 45 seconds West for a distance of 341.34 feet to a point;
- 2.) South 12 degrees 38 minutes 28 seconds West for a distance of 261.37 feet to a point on the north line of lands presently owned by T. P. Shubert (OR 1518-254);

Thence along the north line of said Shubert lands and the north line of lands presently owned by H. and N. Fawcett (OR 1796-906), North 89 degrees 07 minutes 56 seconds West for a

distance of 1255.86 feet to a point;

Thence along said Fawcett lands the following four courses:

- 1.) South 00 degrees 39 minutes 19 seconds East for a distance of 100.00 feet to a point;
- 2.) South 64 degrees 03 minutes 19 seconds East for a distance of 350.00 feet to a point;
- 3.) South 01 degrees 18 minutes 24 seconds West for a distance of 259.00 feet to a point;
- 4.) South 60 degrees 39 minutes 07 seconds West for a distance of 1896.29 feet to a point in the centerline of Raiders Road, (Co. Rd. 616);

Thence along said centerline, on a curve to the left with a radius of 1432.67 feet, an arc length of 223.10 feet, and a chord which bears, South 24 degrees 21 minutes 12 seconds West for a distance of 222.87 feet to a point on the south line of Longaberger lands (DR 1007-526);

Thence along said south line North 89 degrees 47 minutes 03 seconds West for a distance of 31.18 feet to a point on the centerline of the abandoned Ohio Canal;

Thence along said centerline the following eight courses:

- 1.) South 35 degrees 02 minutes 32 seconds West for a distance of 1533.37 feet to a point;
- 2.) South 40 degrees 04 minutes 52 seconds West for a distance of 106.02 feet to a point;
- 3.) South 46 degrees 52 minutes 49 seconds West for a distance of 519.97 feet to a point;
- 4.) South 42 degrees 23 minutes 06 seconds West for a distance of 485.93 feet to a point;
- 5.) South 47 degrees 20 minutes 40 seconds West for a distance of 571.34 feet to a point;
- 6.) South 62 degrees 08 minutes 01 seconds West for a distance of 148.28 feet to a point;
- 7.) South 71 degrees 14 minutes 55 seconds West for a distance of 254.47 feet to a point;
- 8.) South 73 degrees 49 minutes 50 seconds West for a distance of 1672.21 feet to an iron pin found on the southwest corner of lands presently owned by The Longaberger Company (DR 1135-59) and the west line of Section 15;

Thence along said west line, North 00 degrees 59 minutes 54 seconds East for a distance of 2087.14 feet to a stone found on the Southwest corner of Section 6;

Thence along the west line of Section 6, North 01 degrees 04 minutes 27 seconds East for a distance of 1780.72 feet to an iron pin set on the south line of the new State Route 16 right of way;

Thence along said right of way the following three courses:

- 1.) North 35 degrees 27 minutes 24 seconds East for a distance of 243.77 feet to a pipe found;
- 2.) North 41 degrees 20 minutes 15 seconds East for a distance of 715.75 feet to a point;
- 3.) North 53 degrees 26 minutes 04 seconds East for a distance of 298.34 feet to point on the south line of lands presently owned by The Longaberger Company, (DR 1123-3), and the mid-section line;

Thence along said mid-section line, South 89 degrees 14 minutes 18 seconds East for a distance of 1267.35 feet to an iron pin found at the southwest corner of the Northeast Quarter of Section 6;

Thence along the west line of said quarter section, North 00 degrees 22 minutes 59 seconds West for a distance of 840.59 feet to a point on the south line of the new State Route 16 right of way;

Thence along said right of way the following six courses:

- 1.) North 53 degrees 45 minutes 57 seconds East for a distance of 197.38 feet to a pipe found;
- 2.) North 45 degrees 45 minutes 03 seconds East for a distance of 302.78 feet to a pipe found;

- 3.) North 53 degrees 24 minutes 27 seconds East for a distance of 1400.18 feet to a pipe found;
- 4.) North 55 degrees 40 minutes 22 seconds East for a distance of 273.03 feet to a point;
- 5.) North 57 degrees 10 minutes 55 seconds East for a distance of 515.08 feet to a point;
- 6.) North 36 degrees 47 minutes 44 seconds East for a distance of 135.00 feet to a pipe found on the south line of lands presently owned by the Ohio Power Company(DR 1085-586);

Thence along the southwest line of said Ohio Power lands, South 37 degrees 25 minutes 40 seconds East for a distance of 688.59 feet to an ohio power monument found on the east line of Section 6;

Thence along said east line, North 00 degrees 02 minutes 37 seconds East for a distance of 591.14 feet to the principal place of beginning, containing 575.27 acres, more or less.

Subject to all legal easements and applicable right of ways , written or implied.

Excepting from the above described tract, a 2.15 acre tract of land presently owned by Franklin Real Estate,(DR 547-399), and being more particularly described as follows:

Beginning for reference at an iron pin found at the Southwest Corner of the Northeast Quarter of Section 6, Township 3. Range 8, United States Military Lands;

Thence along the east line of the southwest quarter South 00 degrees 58 minutes 46 seconds East, 1702.63 feet to an iron pin found on the southwest corner of lands presently owned by The Longaberger Company,(DR 1007-528);

Thence along said south line, South 89 degrees 47 minutes 03 seconds East, 1240.29 feet to a point, and the principal place of beginning, of the tract herein described;

Thence continuing along said south line South 89 degrees 47 minutes 03 seconds East, 541.25 feet to a point;

Thence leaving said south line and along the a line presently owned by The Longaberger Company,(DR 1063-125), South 34 degrees 45 minutes 46 seconds West, 420.80 feet to a point;

Thence North 40 degrees 54 minutes 33 seconds West 460.12 feet to the principal place of beginning, containing 2.15 acres, more or less.

Subject to all legal easements and right of ways, written or implied.

Said above described tract, minus the exception contains, more or less, 4.74 acres in Section 4, 0.51 acres in Section 5, 364.33 acres in Section 6, 99.30 acres in Section 7, and 104.24 acres in Section 15, being a total of 573.12 acres.

Iron pins set are 5/8 inch diameter by 30 inch long rebar with plastic identification caps.

Bearings are based on the east line of the Section 5, as being North 00 degrees 27 minutes 47 seconds West, as found in DR 1061-636.

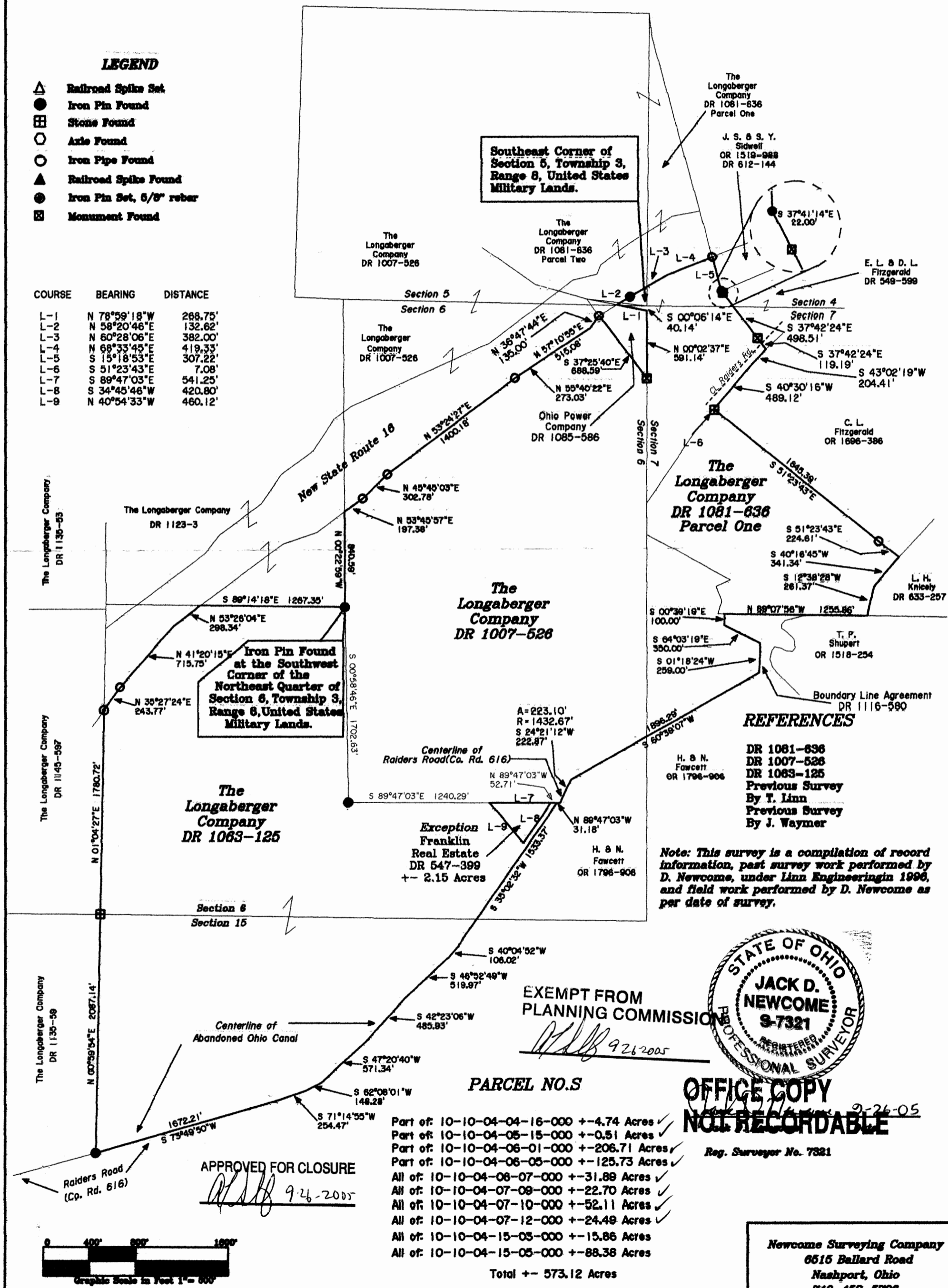
This description is written based on a compilation of previous survey field data, record

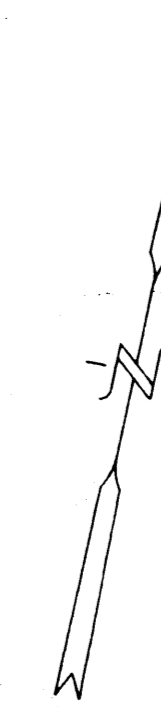
State of Ohio, County of Muskingum, Township of Cass, and being part of the Southwest Quarter of Section 4, part of the Southeast Quarter of Section 5, part of the West Half of Section 7, part of the North and South Half of Section 8, and part of the North Half of Section 15, Township 3, Range 8, United States Military Lands.

Bearings are based on the east line of Section 5, as being North 00 degrees 27 minutes 47 seconds East, as per DR 1081-636.

	Railroad Spike Set
	Iron Pin Found
	Stone Found
	Axle Found
	Iron Pipe Found
	Railroad Spike Found
	Iron Pin Set, 5/8" rebar
	Monument Found

COURSE	BEARING	DISTANCE
L-1	N 78°59'18"W	268.7
L-2	N 58°20'46"E	132.6
L-3	N 60°28'06"E	382.0
L-4	N 68°33'45"E	419.3
L-5	S 15°18'53"E	307.2
L-6	S 51°23'43"E	7.0
L-7	S 89°47'03"E	541.2
L-8	S 34°45'46"W	420.8
L-9	N 40°54'33"W	460.1





Scale: 1" = 200'

0 100 200 400

- Existing Concrete Monument
- ▲ Existing Stone
- Existing Iron Pin (1" rebar)
- ⊙ Iron Pin Set (3/8" x 30" rebar w/ plastic id. cap)

Research

Vol. 670 Pg. 345
 Vol. 608 Pg. 104
 Vol. 547 Pg. 399
 Vol. 785 Pg. 83
 Vol. 762 Pg. 119
 Vol. 504 Pg. 209
 R/W Maps of the Abandoned Ohio Canal
 Sheet #2 of 6 of R/W Plans S.R. 6
 Muskingum County Tax Maps

Bearings are based on the Deed Bearing of
 North Along the West Line of Section 6
 (Vol. 670, Pg. 345).

Being a part of the South Half of Section 6
 and a part of the North Half of Section 15,
 Township 3, Range 8, of the United States Military
 Lands, Cass Township, Muskingum County, Ohio.

I hereby certify, to the best of my knowledge
 and belief the above plat and survey to be
 correct as prepared by me on the 16th day of
 May 1988.

W. J. Biedenbach
 Reg. Surveyor #5718

OFFICE COPY
 NOT RECORDED

W. J. BIEDENBACH & ASSOC. SURVEYING & MAPPING ZANESVILLE, OHIO (614) 153-4850	
Drawn by: SDO	Date: 5-16-88
Scale: 1" = 200'	Checked by:
Job #: 2821	W. Conrad

DESCRIPTION APPROVED
 FOR AUDITOR'S TRANSFER
 BY *J. L. Nantz*
 5-19-88

