



Linn Engineering, Inc.

Civil Engineering Consultants

534 Market Street • P.O. Box 2671 • Zanesville, Ohio 43702-2671

ADDRESS N/A

614-452-7434

ANNEXATION PLAT TO THE VILLAGE OF DRESDEN

OFFICE COPY
NOT RECORDABLE

Situated in and being a part of Quarter Township 1 and Quarter Township 4, Township 3 North, Range 8 West, United States Military Lands, Cass Township, Muskingum County, Ohio, bounded and described as follows:

Beginning at the southeast corner of lot 45, as described in a survey of Joseph Fisher, dated August 1875, and found in Muskingum County Deed Record "H", Page 270; thence along the south line of lands now owned by M. Allen (Deed Record 561-866) the following three courses: 1) South 86 degrees 36 minutes 57 seconds East 55.54 feet to a point; 2) South 86 degrees 36 minutes 57 seconds East 1093.68 feet to a point; 3) South 86 degrees 36 minutes 57 seconds East 152.91 feet to a point on the west Village of Dresden Corporation Line; thence along said corporation line the following five courses: 1) South 03 degrees 51 minutes 34 seconds West 52.75 feet to an iron pin found; 2) South 03 degrees 52 minutes 37 seconds West 228.38 feet to an iron pin found; 3) South 03 degrees 40 minutes 03 seconds West 23.38 feet to a point on the centerline of Township Road 80 (Dutch Hill Road); 4) South 73 degrees 59 minutes 26 seconds West 184.12 feet to a point; 5) South 71 degrees 08 minutes 48 seconds West 843.41 feet to a point; thence North 22 degrees 47 minutes 55 seconds West 13.88 feet to an iron pin found; thence North 23 degrees 50 minutes 07 seconds West 511.99 feet to an iron pin by deed on the northeast corner of lands now owned by B.A. and N.S. Cameron (Deed Record 778-149); thence along Cameron's north line South 57 degrees 42 minutes 16 seconds West 273.74 feet to an iron pin by deed; thence South 52 degrees 39 minutes 23 seconds West 165.00 feet to an iron pin by deed; thence South 52 degrees 35 minutes 53 seconds West 110.22 feet to an iron pin by deed; thence South 15 degrees 41 minutes 46 seconds East 96.26 feet to an iron pin by deed; thence South 15 degrees 41 minutes 46 seconds East 24.74 feet to a point on the north line of Township Road 77 (Redbud Road); thence along said north line the following 25 courses: 1) on a curve to the left having a radius of 179.05 feet, a central angle of 21 degrees 36 minutes 23 seconds and a chord bearing North 88 degrees 22 minutes 07 seconds West for a distance of 67.12 feet; 2) South 80 degrees 49 minutes 42 seconds West 242.19 feet to a point on the northline of said Redbud Road; 3) South 72 degrees 36 minutes 49 seconds West 170.10 feet to a point; 4) on a curve to the right, having a radius of 260.43 feet, a central angle of 24 degrees 26 minutes 03 seconds and a chord bearing South 84 degrees 49 minutes 51 seconds West for a distance of 110.22 feet to a point; 5) North 82 degrees 57 minutes 08 seconds West 1.29 feet to a point; 6) on a curve to the right

OFFICE COPY
NOT RECORDABLE

having a radius of 279.49 feet, a central angle of 23 degrees 27 minutes 39 seconds and chord bearing North 71 degrees 13 minutes 19 seconds West for a distance of 113.64 feet to a point; 7) North 59 degrees 29 minutes 29 seconds West 35.13 feet to a point; 8) on a curve to the right, having a radius of 254.65 feet, a central angle of 23 degrees 30 minutes 58 seconds and a chord bearing North 47 degrees 44 minutes 00 seconds West for a distance of 103.78 feet to a point; 9) North 35 degrees 58 minutes 31 seconds West 192.07 feet to a point; 10) on a curve to the left, having a radius of 143.54 feet, a central angle of 53 degrees 21 minutes 31 seconds and a chord bearing North 62 degrees 39 minutes 17 seconds West for a distance of 128.90 feet to a point; 11) on a curve to the left, having a radius of 96.29 feet, a central angle of 72 degrees 36 minutes 21 seconds and a chord bearing South 54 degrees 21 minutes 47 seconds West for a distance of 114.02 feet to a point; 12) South 18 degrees 03 minutes 37 seconds West 86.21 feet to a point; 13) on a curve to the right, having a radius of 224.69 feet, a central angle of 30 degrees 14 minutes 59 seconds and a chord bearing South 33 degrees 11 minutes 07 seconds West for a distance of 117.25 feet to a point; 14) on a curve to the right, having a radius of 103.34 feet, a central angle of 51 degrees 13 minutes 24 seconds and a chord bearing South 73 degrees 55 minutes 18 seconds West for a distance of 89.34 feet to a point; 15) North 80 degrees 28 minutes 00 seconds West 10.30 feet to a point; 16) on a curve to the right, having a radius of 98.79 feet, a central angle of 64 degrees 31 minutes 15 seconds and a chord bearing North 48 degrees 12 minutes 22 seconds West for a distance of 105.46 feet to a point; 17) North 15 degrees 56 minutes 45 seconds West for a distance of 134.63 feet to a point; 18) on a curve to the left, having a radius of 194.10 feet, a central angle of 40 degrees 13 minutes 29 seconds and a chord bearing North 36 degrees 03 minutes 30 seconds West for a distance of 133.49 feet to a point; 19) on a curve to the left, having a radius of 201.40 feet, a central angle of 37 degrees 27 minutes 10 seconds and a chord bearing North 74 degrees 53 minutes 49 seconds West for a distance of 129.09 feet to a point; 20) South 86 degrees 22 minutes 36 seconds West 48.28 feet to a point; 21) on a curve to the left, having a radius of 1041.74 feet, a central angle of 11 degrees 57 minutes 43 seconds and a chord bearing South 80 degrees 23 minutes 45 seconds West for a distance of 217.09 feet to a point; 22) South 74 degrees 24 minutes 53 seconds West 142.27 feet to a point; 23) on a curve to the left, having a radius of 572.96 feet, a central angle of 20 degrees 09 minutes 59 seconds and a chord bearing South 64 degrees 19 minutes 53 seconds West for a distance of 200.63 feet to a point; 24) South 54 degrees 14 minutes 54 seconds West 193.04 feet to a point; 25) on a curve to the right, having a radius of 318.31 feet, a central angle of 30 degrees 08 minutes 11 seconds and a chord bearing South 69 degrees 19 minutes 00 seconds West for a distance of 165.50 feet to a point; 26) South 84 degrees 23 minutes 05 seconds West 281.23 feet to the southeast corner of lands now owned by T. and K. Agin

(Deed Record 1006-293); thence along Agin's east line North 00 degrees 02 minutes 00 seconds West 902.83 feet to an iron pin by deed on the south line of lands now owned by M. Hamilton (Deed Record 1015-229), passing iron pins by deed at 30.00 feet and 297.65 feet; thence along Hamilton's south line South 86 degrees 36 minutes 24 seconds East 491.97 feet to an iron pin by deed on Hamilton's southeast corner; thence along Hamilton's east line North 02 degrees 27 minutes 09 seconds East 649.92 feet to an iron pin by deed on the southwest corner of lands now owned by C. Lutz (Deed Record 530-770); thence along Lutz's south line South 85 degrees 56 minutes 31 seconds East 1326.03 feet to an iron pin by deed on the southeast corner of lands now owned by J. Alexander's (Deed Record 996-473); thence North 15 degrees 34 minutes 42 seconds East 59.57 feet to an iron pin by deed on the southwest corner of lands now owned by R. Peffer (Deed Record 974-339); thence along Peffer's south line South 84 degrees 59 minutes 47 seconds East 653.33 feet to an iron pin by deed on the northwest corner of land now owned by R. Peffer (Deed Record 1048-433); thence along Peffer's west line South 01 degrees 50 minutes 02 seconds West 689.86 feet to an iron pin found on Peffer's southwest corner; thence along Peffer's south line South 86 degrees 35 minutes 42 seconds East 632.12 feet to the place of beginning, containing 90.56 acres, more or less, subject to all legal road right of ways and applicable easements, written or implied.

Bearings are based on those given in Deed Record 1052, Page 274.

This description is written June 10, 1992 by Jack D. Newcome, Reg. No. 7321 from recorded documents and is not based on an actual field survey.

**OFFICE COPY
NOT RECORDABLE**

Jack D. Newcome
Reg. No. 7321
Date 06/10/92

ALL OF PARCEL NO.:
10-10-08-61-44-000 (19.60 ac.)
10-10-08-61-45-000 (10.80 ac.)
10-10-34-41-06-000 (27.10 ac.)
10-10-34-41-46-000 (19.55 ac.)
10-10-34-41-01-001 (0.85 ac.)
10-10-34-41-01-000 (12.21 ac.)
CASS TWP. TRUSTEES - TWP. RD. 80 (0.45 ac.)



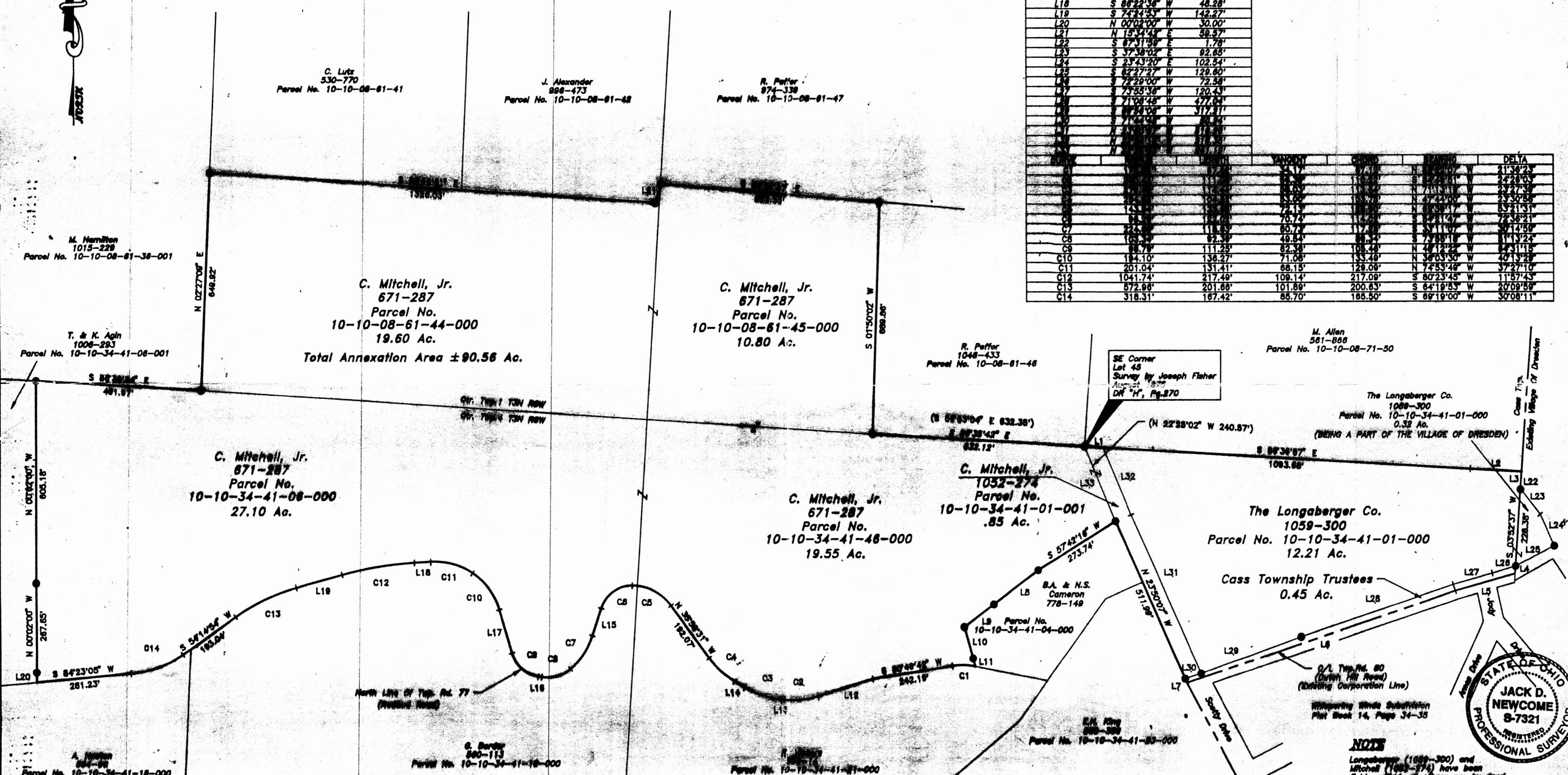
ANNEXATION PLAT TO THE VILLAGE OF DRESDEN

IN QUARTER TOWNSHIP 1, AND QUARTER TOWNSHIP 4,
TOWNSHIP 3 NORTH, RANGE 8 WEST, TOWNSHIP OF CASS
COUNTY OF MUSKINGUM AND STATE OF OHIO
MAY 18, 1992

PLAT # 10-08-01-44

LINE	BEARING	DISTANCE
L1	N 89°30'00" W	120.00'
L2	S 89°30'00" W	120.00'
L3	N 89°30'00" W	120.00'
L4	S 89°30'00" W	120.00'
L5	N 89°30'00" W	120.00'
L6	S 89°30'00" W	120.00'
L7	N 89°30'00" W	120.00'
L8	S 89°30'00" W	120.00'
L9	N 89°30'00" W	120.00'
L10	S 89°30'00" W	120.00'
L11	N 89°30'00" W	120.00'
L12	S 89°30'00" W	120.00'
L13	N 89°30'00" W	120.00'
L14	S 89°30'00" W	120.00'
L15	N 89°30'00" W	120.00'
L16	S 89°30'00" W	120.00'
L17	N 89°30'00" W	120.00'
L18	S 89°30'00" W	120.00'
L19	N 89°30'00" W	120.00'
L20	S 89°30'00" W	120.00'
L21	N 89°30'00" W	120.00'
L22	S 89°30'00" W	120.00'
L23	N 89°30'00" W	120.00'
L24	S 89°30'00" W	120.00'
L25	N 89°30'00" W	120.00'
L26	S 89°30'00" W	120.00'
L27	N 89°30'00" W	120.00'
L28	S 89°30'00" W	120.00'
L29	N 89°30'00" W	120.00'
L30	S 89°30'00" W	120.00'
L31	N 89°30'00" W	120.00'
L32	S 89°30'00" W	120.00'
L33	N 89°30'00" W	120.00'
L34	S 89°30'00" W	120.00'
L35	N 89°30'00" W	120.00'
L36	S 89°30'00" W	120.00'
L37	N 89°30'00" W	120.00'
L38	S 89°30'00" W	120.00'
L39	N 89°30'00" W	120.00'
L40	S 89°30'00" W	120.00'
L41	N 89°30'00" W	120.00'
L42	S 89°30'00" W	120.00'
L43	N 89°30'00" W	120.00'
L44	S 89°30'00" W	120.00'
L45	N 89°30'00" W	120.00'
L46	S 89°30'00" W	120.00'
L47	N 89°30'00" W	120.00'
L48	S 89°30'00" W	120.00'
L49	N 89°30'00" W	120.00'
L50	S 89°30'00" W	120.00'
L51	N 89°30'00" W	120.00'
L52	S 89°30'00" W	120.00'
L53	N 89°30'00" W	120.00'
L54	S 89°30'00" W	120.00'
L55	N 89°30'00" W	120.00'
L56	S 89°30'00" W	120.00'
L57	N 89°30'00" W	120.00'
L58	S 89°30'00" W	120.00'
L59	N 89°30'00" W	120.00'
L60	S 89°30'00" W	120.00'
L61	N 89°30'00" W	120.00'
L62	S 89°30'00" W	120.00'
L63	N 89°30'00" W	120.00'
L64	S 89°30'00" W	120.00'
L65	N 89°30'00" W	120.00'
L66	S 89°30'00" W	120.00'
L67	N 89°30'00" W	120.00'
L68	S 89°30'00" W	120.00'
L69	N 89°30'00" W	120.00'
L70	S 89°30'00" W	120.00'
L71	N 89°30'00" W	120.00'
L72	S 89°30'00" W	120.00'
L73	N 89°30'00" W	120.00'
L74	S 89°30'00" W	120.00'
L75	N 89°30'00" W	120.00'
L76	S 89°30'00" W	120.00'
L77	N 89°30'00" W	120.00'
L78	S 89°30'00" W	120.00'
L79	N 89°30'00" W	120.00'
L80	S 89°30'00" W	120.00'
L81	N 89°30'00" W	120.00'
L82	S 89°30'00" W	120.00'
L83	N 89°30'00" W	120.00'
L84	S 89°30'00" W	120.00'
L85	N 89°30'00" W	120.00'
L86	S 89°30'00" W	120.00'
L87	N 89°30'00" W	120.00'
L88	S 89°30'00" W	120.00'
L89	N 89°30'00" W	120.00'
L90	S 89°30'00" W	120.00'
L91	N 89°30'00" W	120.00'
L92	S 89°30'00" W	120.00'
L93	N 89°30'00" W	120.00'
L94	S 89°30'00" W	120.00'
L95	N 89°30'00" W	120.00'
L96	S 89°30'00" W	120.00'
L97	N 89°30'00" W	120.00'
L98	S 89°30'00" W	120.00'
L99	N 89°30'00" W	120.00'
L100	S 89°30'00" W	120.00'

LINE	BEARING	DISTANCE	DELTA
C1	N 89°30'00" W	120.00'	21°36'23"
C2	S 89°30'00" W	120.00'	24°28'03"
C3	N 89°30'00" W	120.00'	23°47'30"
C4	S 89°30'00" W	120.00'	23°50'28"
C5	N 89°30'00" W	120.00'	23°21'34"
C6	S 89°30'00" W	120.00'	23°14'59"
C7	N 89°30'00" W	120.00'	21°11'24"
C8	S 89°30'00" W	120.00'	20°11'24"
C9	N 89°30'00" W	120.00'	18°41'09"
C10	S 89°30'00" W	120.00'	17°41'09"
C11	N 89°30'00" W	120.00'	16°03'48"
C12	S 89°30'00" W	120.00'	15°03'48"
C13	N 89°30'00" W	120.00'	13°57'43"
C14	S 89°30'00" W	120.00'	12°57'43"



BASIS OF BEARINGS
Bearings based on deed record 1052-274.

Approved by Dresden Village Council
Date: _____
Ord. No. _____

Approved by Muskingum County Commissioners
Date: _____
Shirley PETERS
Charles Egan
Larry Merry

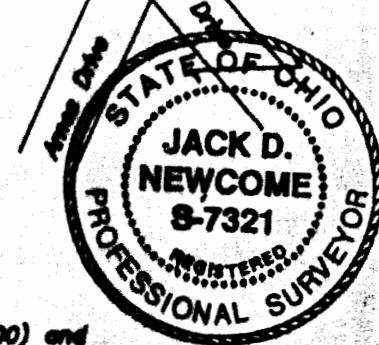
Transferred Date: _____
Norma J. Bowman
Muskingum County Auditor

Recorded:
Received for record on the _____ day of _____ 1992
at _____ o'clock _____
recorded _____ 1992
in Plat File _____ No. _____
Fee: _____

Donald Minnik
Muskingum County Recorder

NOTE
Longaberger (1059-300) and Mitchell (1052-274) have been field verified, all others are by deed.
Deed (671-287) references in parentheses.

OFFICE COPY RECORDABLE
Jack D. Newcome
Registered Surveyor No. 7321
Date: 6-10-92



LEGEND
● Iron Pin By Deed
● Iron Pin Found

E Linn Engineering, Inc. 614-488-7484 Civil Engineering Consultants P.O. Box 2671, Sarnesville, Ohio 43082-2671	
Project No. MIT-448	Drawn By THL
Date 6/8/92	Checked THL
Scale 1" = 200'	