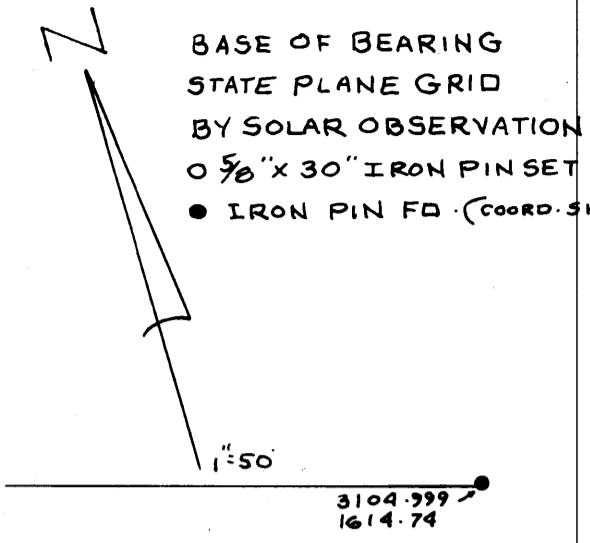


10-10-13-13 N14
 10-10-13-14 12665 3rd AVE

10-10-12-07 12640 3rd AVE

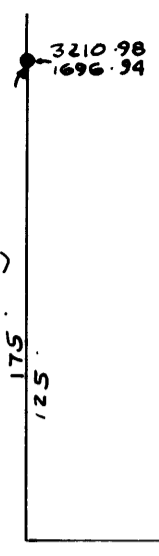


REFERENCES

- VOL. 515, P. 918
- VOL. 924, P. 203
- VOL. 624, P. 121
- VOL. 571, P. 294
- VOL. 725, P. 325
- VOL. 186, P. 155

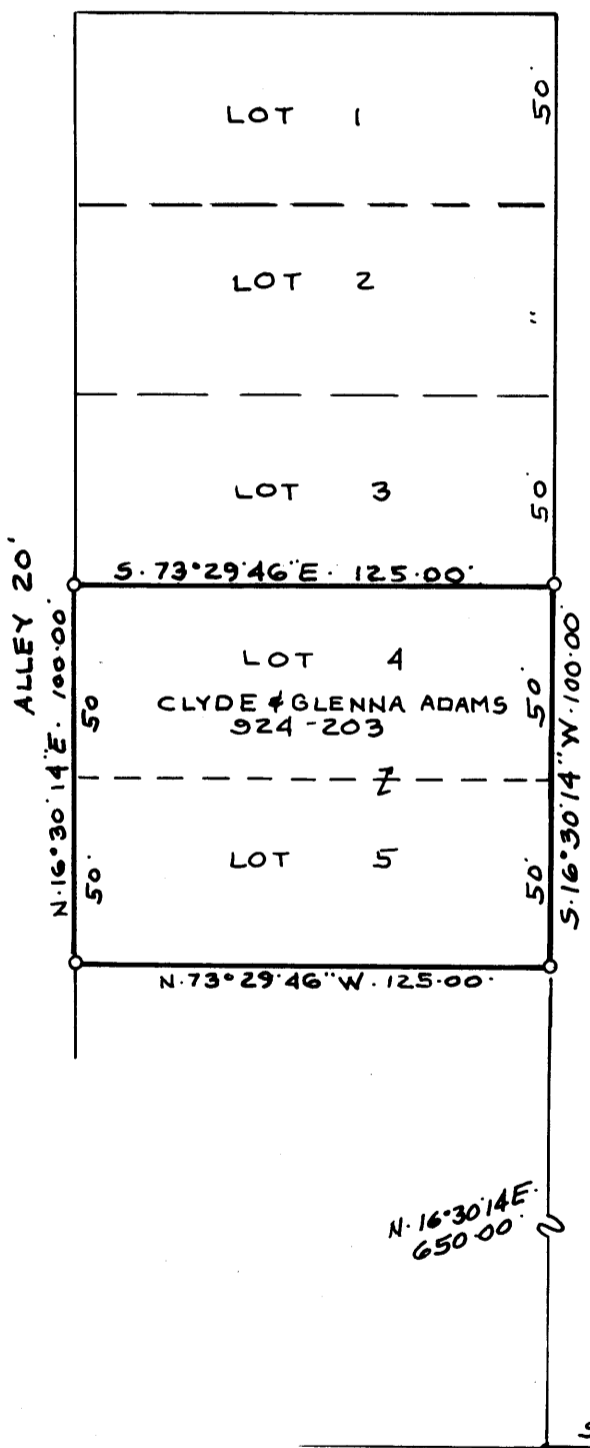
DICKEY ADD. P. 84, P. 113
 TRINWAY REP. B. 1, P. 242
 U.S.G.S TRINWAY QUAD.
 CASS TWP TAX MAPS

● 3174.64
 1819.76

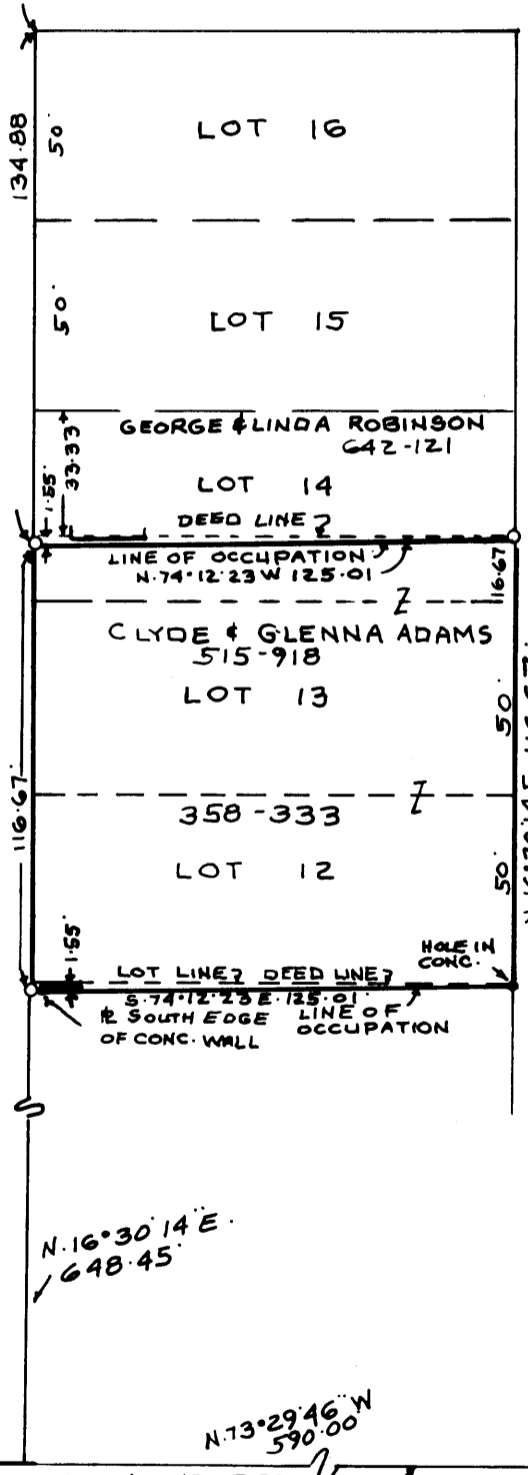


3355.25
 2355.72

IRON PIN SET N.W. COR. LOT 1
 DICKEY ADD. (4, P. 113)
 STONE CALLED FOR WAS DESTROYED
 RESET COR. WITH VOL. 725, P. 325
 C SURVEY MADE FOR SOHIO



THIRD AVE.



ALLEY 20

(PLAT BEARING S. 17° 05' W.)
 WEST LINE MAIN ST. S. 16° 30' 14\"/>

MAIN ST 50
 N. 73° 29' 46\"/>

2861.94
 2260.87

MAP SHOWING SURVEY OF
 CLYDE & GLENNA ADAMS PROP.
 LOTS 12, 13 & PT. 14 OF SQUARE G
 LOTS 4 & 5 OF SQUARE II
 VILLAGE OF TRINWAY
 CASS TWP. MUSKINGUM CO., OHIO

SOUTH LINE OF 5TH ST.

CONC. POST
 8' x 8' x 3'

2012.70
 1957.12

ON EAST SIDE
 4 TRAV. PT.
 2000
 2000

RICHARD M. GRAVES
 REGISTERED SURVEYOR NO. 5792
 225 KENNEDY BLVD. SDR.
 WILMINGTON, OHIO 43880
 APRIL 3, 1989
 Richard M. Graves

**OFFICE COPY
 NOT RECORDABLE**