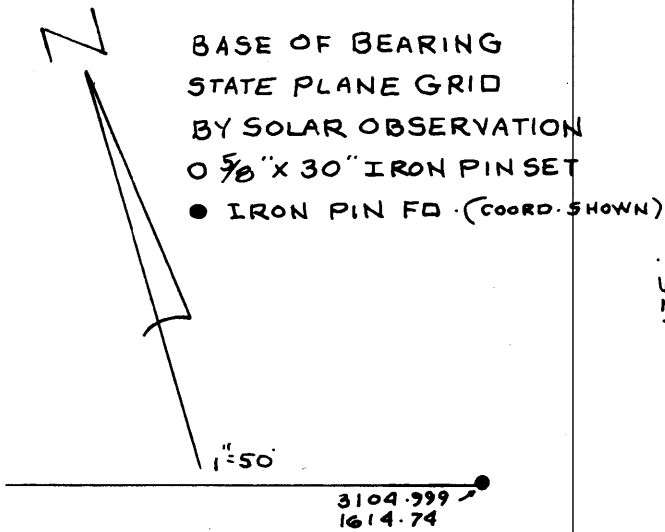


10-10-13-13 N1A
 10-10-13-14 12665 3rd AVE

10-10-12-07 12640 3rd AVE



BASE OF BEARING
 STATE PLANE GRID
 BY SOLAR OBSERVATION
 0.50" X 30" IRON PIN SET
 ● IRON PIN FD (COORD. SHOWN)

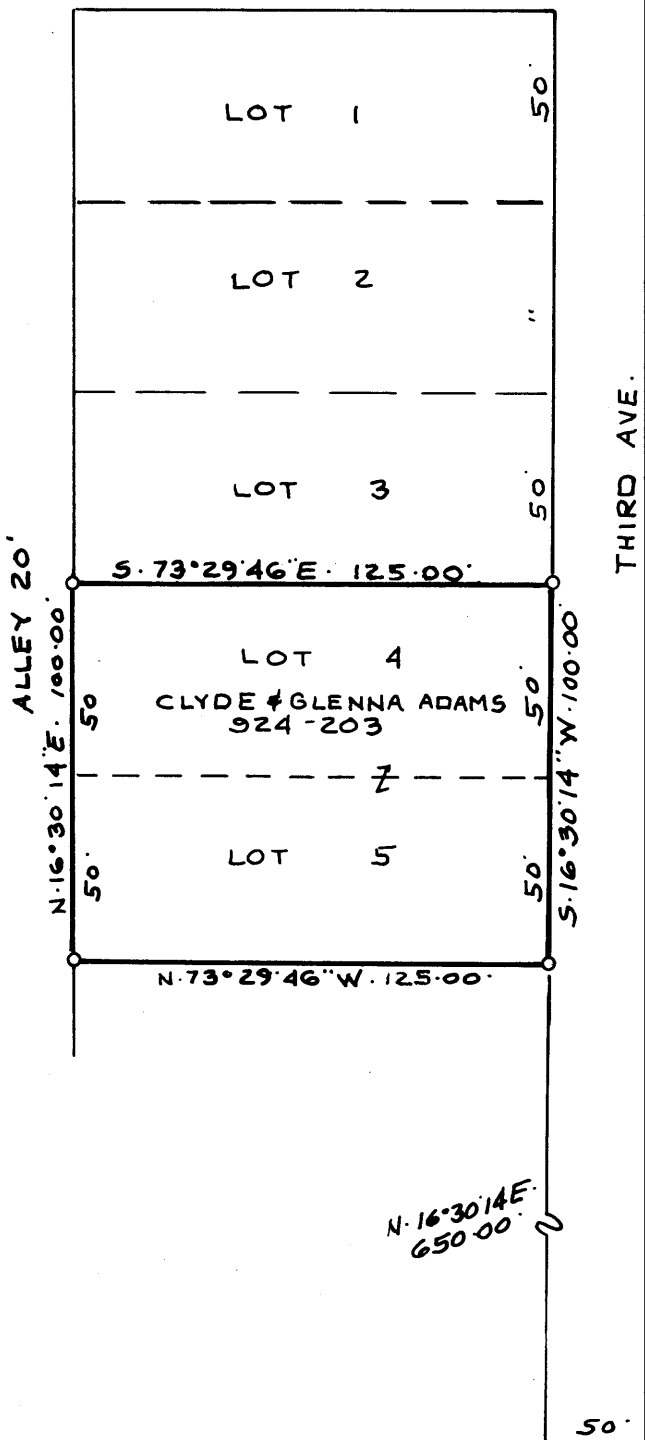
REFERENCES

- VOL. 515, P. 918
- VOL. 924, P. 203
- VOL. 624, P. 121
- VOL. 571, P. 294
- VOL. 725, P. 325
- VOL. 186, P. 155

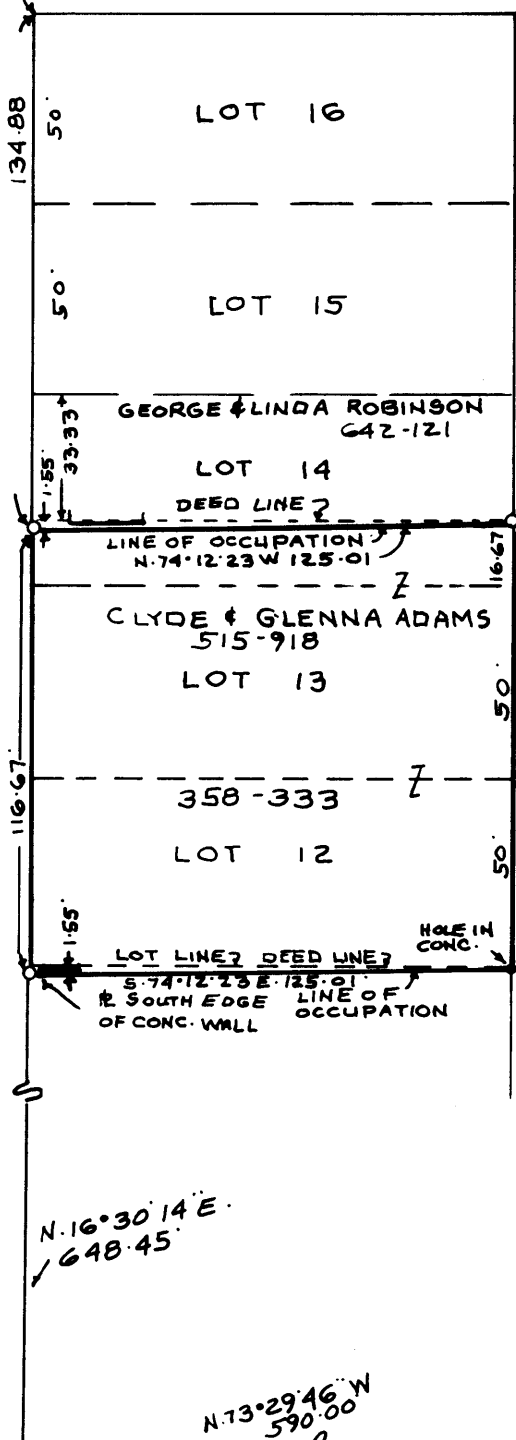
DICKEY ADD P. 84, P. 113
 TRINWAY REP. B. 1, P. 242
 U.S.G.S TRINWAY QUAD.
 CASS TWP TAX MAPS

● 3174.64
 1819.76

IRON PIN SET N.W. COR. LOT 1
 DICKEY ADD. (4, P. 113)
 STONE CALLED FOR WAS DESTROYED
 RESET COR. WITH VOL. 725, P. 325
 C SURVEY MADE FOR S(10)



THIRD AVE.



ALLEY 20'

(PLAT BEARING S.17°05'W)
 WEST LINE MAIN ST. S.16°30'14\"/>

MAIN ST 50'

N.73°29'46\"/>

2861.94
 2260.22

MAP SHOWING SURVEY OF
 CLYDE & GLENNA ADAMS PROP.
 LOTS 12, 13 & PT. 14 OF SQUARE G
 LOTS 4 & 5 OF SQUARE II
 VILLAGE OF TRINWAY
 CASS TWP. MUSKINGUM CO., OHIO

SOUTH LINE OF 5TH. ST.
 CONC. POST 8" X 8" X 3'
 2012.70
 1957.72
 ONE EAST SIDE
 TRAV. PT.
 2000
 2000

RICHARD M. GRAVES
 REGISTERED SURVEYOR NO. 5792
 2725 KENWOOD WOODS DR.
 NEWPORT, OHIO 43830
 APRIL 3, 1989
 Richard M. Graves

**OFFICE COPY
 NOT RECORDABLE**