

## Legal Description of Billie S. Krichbaum lands in Cass Township

Situated in the State of Ohio, County of Muskingum, Township of Cass, and being part of Lot 4, and Lot 5 of Quarter Township 3, Township 3, Range 8, United States Military Lands, and being all the lands presently owned by Billie S. Krichbaum, Trustee, as per Official Record 1622, Page 460, and being more particularly described as follows:

### Tract One

Beginning for reference at an iron pin found at the Southwest Corner of the North Half of Lot 4, thence along the north line of lands presently owned by Jean D. Jackson, (DR 819-145), and through Lot 5, North 88 degrees 01 minutes 34 seconds West, 596.56 feet to a point in the centerline of Narrows Road,(Co. Rd. 76), passing iron pins found at 57.19 feet, and 522.16 feet, and being the principal place of beginning;

Thence along the centerline of said road, the following four courses:

- 1.) South 61 degrees 40 minutes 17 seconds West, 175.36 feet to a point;
- 2.) South 63 degrees 20 minutes 26 seconds West, 235.37 feet to a point;
- 3.) South 64 degrees 01 minutes 52 seconds West, 160.48 feet to a point;
- 4.) South 60 degrees 42 minutes 00 seconds West, 35.43 feet to a point on a corner of the east line of lands presently owned by W. H. and A. M. Wagner et al,(DR 551-471);

Thence along the east line of said Wagner lands, North 39 degrees 06 minutes 48 seconds West, 321.03 feet to a point on the Mean High Water Line of the Wakatomika Creek, passing iron pins set at 20.30 feet, and 311.03 feet;

Thence along the said Mean High Water Line the following twenty six courses:

- 1.) North 32 degrees 44 minutes 21 seconds East, 67.20 feet to a point;
- 2.) North 08 degrees 16 minutes 43 seconds East, 170.67 feet to a point, from which an iron pin set bears South 81 degrees 03 minutes 27 seconds East, 11.18 feet;
- 3.) North 11 degrees 34 minutes 05 seconds East, 123.01 feet to a point;
- 4.) North 59 degrees 44 minutes 07 seconds East, 152.63 feet to a point;
- 5.) North 82 degrees 08 minutes 43 seconds East, 136.26 feet to a point;
- 6.) North 79 degrees 37 minutes 24 seconds East, 88.00 feet to a point;
- 7.) North 52 degrees 25 minutes 50 seconds East, 127.87 feet to a point;
- 8.) North 82 degrees 52 minutes 42 seconds East, 93.58 feet to an iron pin set;
- 9.) North 77 degrees 54 minutes 56 seconds East, 101.67 feet to a point;
- 10.) North 51 degrees 07 minutes 55 seconds East, 35.86 feet to a point;
- 11.) North 39 degrees 47 minutes 30 seconds East, 121.40 feet to a point;
- 12.) North 71 degrees 03 minutes 48 seconds East, 125.20 feet to a point;
- 13.) North 89 degrees 51 minutes 48 seconds East, 70.93 feet to a point;
- 14.) South 65 degrees 00 minutes 11 seconds East, 74.70 feet to a point;
- 15.) South 53 degrees 47 minutes 30 seconds East, 102.03 feet to a point;
- 16.) South 74 degrees 18 minutes 35 seconds East, 96.22 feet to a point;
- 17.) North 80 degrees 32 minutes 06 seconds East, 102.24 feet to a point on the Lot Line between Lot 4 and Lot 5;
- 18.) North 80 degrees 32 minutes 06 seconds East, 17.48 feet to a point;
- 19.) North 67 degrees 56 minutes 43 seconds East, 130.88 feet to a point;

20.) North 32 degrees 56 minutes 07 seconds East, 77.88 feet to a point;  
21.) North 31 degrees 29 minutes 41 seconds East, 137.80 feet to a point;  
22.) North 63 degrees 30 minutes 36 seconds East, 102.43 feet to a point;  
23.) North 74 degrees 16 minutes 39 seconds East, 70.59 feet to a point;  
24.) North 67 degrees 50 minutes 28 seconds East, 40.22 feet to an iron pin set;  
25.) North 64 degrees 20 minutes 03 seconds East, 31.70 feet to a point;  
26.) North 32 degrees 07 minutes 58 seconds East, 22.98 feet to a point in the centerline of Moore Rd. (Co. Rd. 301), and the west line of lands presently owned by Leroy and Carolyn Dickerson,(DR 1003-30);

Thence along the centerline of said road, South 57 degrees 52 minutes 02 seconds East, 52.14 feet to a point at the intersection of said Moore Road and Narrows Road,(Co. Rd. 76);

Thence along the centerline of Narrows Road the following eleven courses:

- 1.) South 46 degrees 50 minutes 27 seconds West, 35.16 feet to a point;
- 2.) South 39 degrees 14 minutes 11 seconds West, 205.87 feet to a point on the northwest corner of lands presently owned by C. L. and C. A. Dickerson,(DR 753-51);
- 3.) South 39 degrees 14 minutes 11 seconds West, 245.01 feet to a point;
- 4.) South 42 degrees 24 minutes 28 seconds West, 47.89 feet to a point;
- 5.) South 48 degrees 24 minutes 04 seconds West, 64.09 feet to a point;
- 6.) South 54 degrees 44 minutes 23 seconds West, 155.04 feet to a point;
- 7.) South 56 degrees 10 minutes 02 seconds West, 35.72 feet to a point on the lot line between Lot 4, and Lot 5;
- 8.) South 56 degrees 10 minutes 02 seconds West, 98.15 feet to a point;
- 9.) South 58 degrees 49 minutes 09 seconds West, 148.57 feet to a point;
- 10.) South 60 degrees 48 minutes 13 seconds West, 286.93 feet to a point;
- 11.) South 61 degrees 40 minutes 17 seconds West, 178.25 feet to the principal place of beginning, containing 18.14 acres more or less.

Parcel No.s:

All of: 10-30-51-13-000 +- 15.96 Acres  
Part of: 10-30-51-07-000 +- 2.18 Acres  
(+- 0.97 Acres in Road R\W)

#### Tract Two

Beginning for reference and the principal place of beginning, at an iron pin found at the Southwest Corner of the North Half of Lot 4, of Quarter Township 3, Township 3, Range 8, United States Military Lands;

Thence along the south line of lands presently owned by Jean D. Jackson,(DR 819-145), the following four courses:

- 1.) South 02 degrees 02 minutes 05 seconds West, 17.89 feet to a iron pin found;
- 2.) North 78 degrees 02 minutes 24 seconds West, 36.96 feet to a iron pin found;
- 3.) North 59 degrees 06 minutes 07 seconds West, 23.73 feet to an iron pin found;
- 4.) North 88 degrees 01 minutes 34 seconds West, 539.37 feet to a point in the centerline of Narrows Road, (Co. Rd. 76), passing an iron pin found at 464.97 feet;

Thence along the centerline of said road, the following nine courses:

- 1.) North 61 degrees 40 minutes 17 seconds East, 178.25 feet to a point;
- 2.) North 60 degrees 48 minutes 13 seconds East, 286.93 feet to a point;
- 3.) North 58 degrees 49 minutes 09 seconds East, 148.57 feet to a point;
- 4.) North 56 degrees 10 minutes 02 seconds East, 98.15 feet to a point on the lot line between Lot 4 and Lot 5;
- 5.) North 56 degrees 10 minutes 02 seconds East, 35.72 feet to a point;
- 6.) North 54 degrees 44 minutes 23 seconds East, 155.04 feet to a point;
- 7.) North 48 degrees 24 minutes 04 seconds East, 64.09 feet to a point;
- 8.) North 42 degrees 24 minutes 28 seconds East, 47.89 feet to a point;
- 9.) North 39 degrees 14 minutes 11 seconds East, 245.01 feet to a point on the northwest corner of lands presently owned by C. L. And C. A. Dickerson, (DR 753-51);

Thence along the boundary of said Dickerson lands the following four courses:

- 1.) South 33 degrees 27 minutes 16 seconds East, 395.97 feet to an iron pin found, passing an iron pin found at 47.33 feet;
- 2.) North 68 degrees 51 minutes 22 seconds East, 384.24 feet to an iron pin found;
- 3.) North 11 degrees 03 minutes 06 seconds West, 444.82 feet to an iron pin found;
- 4.) North 59 degrees 37 minutes 02 seconds West, 124.00 feet to a point in the centerline of Narrows Road, (Co. Rd. 76), passing an iron pin found at 95.96 feet;

Thence along the centerline of said road the following nine courses:

- 1.) North 74 degrees 09 minutes 54 seconds East, 189.85 feet to a point;
- 2.) North 72 degrees 04 minutes 52 seconds East, 73.85 feet to a point;
- 3.) North 62 degrees 59 minutes 18 seconds East, 87.24 feet to a point;
- 4.) North 57 degrees 42 minutes 21 seconds East, 78.21 feet to a point;
- 5.) North 65 degrees 45 minutes 05 seconds East, 64.54 feet to a point;
- 6.) North 81 degrees 36 minutes 26 seconds East, 54.84 feet to a point;
- 7.) South 89 degrees 18 minutes 57 seconds East, 67.63 feet to a point;
- 8.) South 85 degrees 19 minutes 47 seconds East, 238.29 feet to a point;
- 9.) South 89 degrees 45 minutes 25 seconds East, 118.54 feet to a point on the Northwest corner of lands presently owned by D. J. Moore (DR 916-88);

Thence along the west boundary of said Moore lands the following six courses:

- 1.) South 43 degrees 45 minutes 01 seconds East, 271.38 feet to a stone found, passing an iron pin set at 22.27 feet;
- 2.) South 71 degrees 43 minutes 08 seconds East, 373.61 feet to an iron pin set;
- 3.) South 01 degrees 46 minutes 40 seconds West, 325.37 feet to an iron pin set;
- 4.) South 73 degrees 10 minutes 21 seconds West, 491.99 feet to an iron pin set;
- 5.) South 89 degrees 46 minutes 06 seconds West, 340.11 feet to a pipe found;
- 6.) South 02 degrees 06 minutes 37 seconds West, 489.05 feet to a stone found on the north line of said Jean Jackson lands;

Thence along the north line of said Jackson lands, North 88 degrees 24 minutes 05 seconds West, 1433.05 feet to the principal place of beginning, containing 40.00 acres more or less;

Parcel No.

Part of: 10-30-51-07-000 +- 40.00 Acres (+- 0.45 Acres in Road R\W)

The above described tracts are subject to all legal recorded easements and right of ways.

Iron pins set are 5/8 inch rebars , 30 inches long, with plastic identification caps.

Bearings are based on an assumed north meridian, and are for angular calculations only.

This description is written based on a field survey completed March 27, 2009, by Jack D. Newcome, Reg. No. 7321.

**OFFICE COPY**  
**NOT RECORDABLE**  
Jack D. Newcome, Reg. No. 7321

3-21-09  
Date



DESCRIPTION  
APPROVED  
By: *[Signature]* 3/21/09

COURSE BEARING DISTANCE

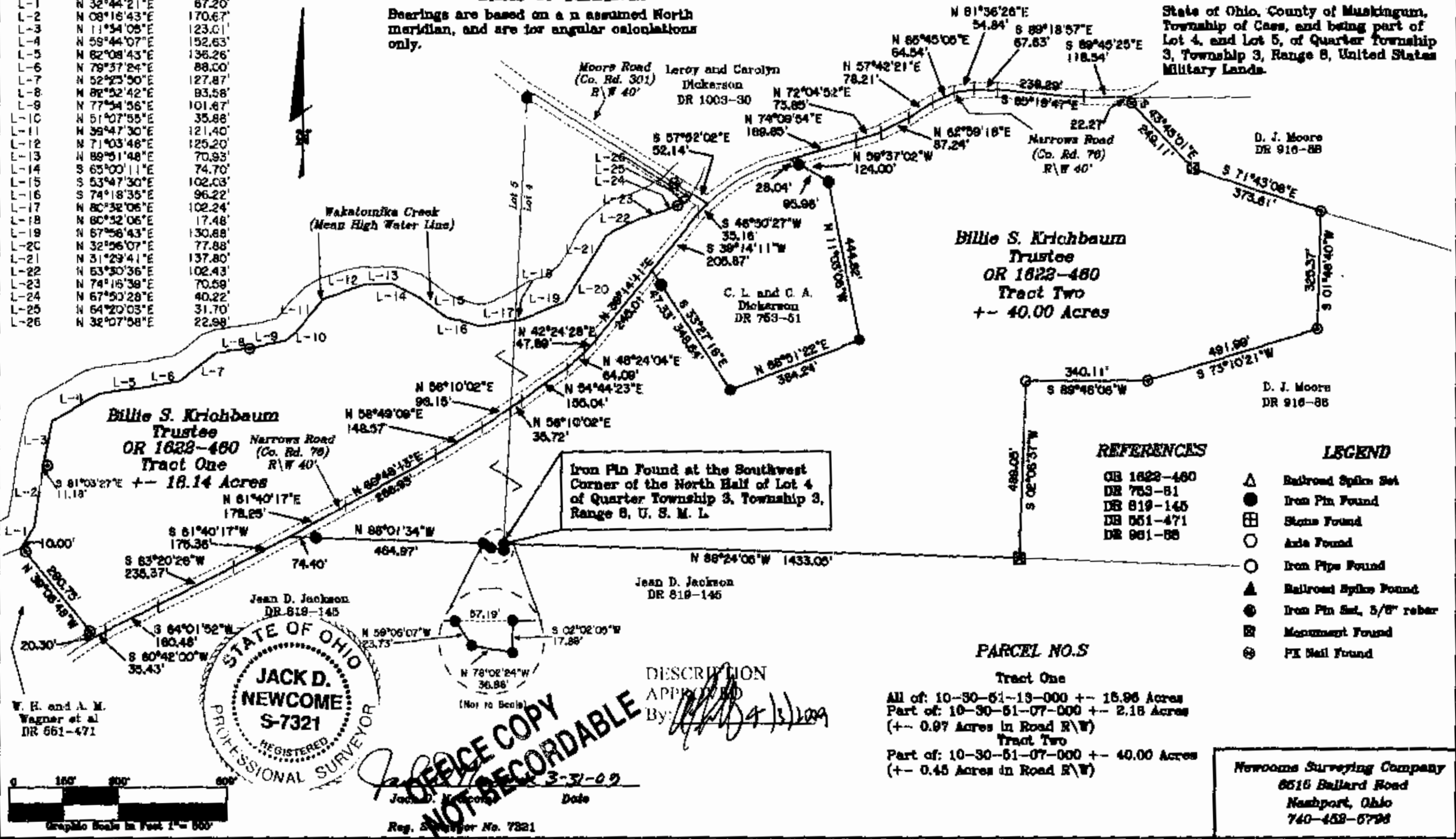
L-1	N 32°44'21"E	67.20'
L-2	N 08°16'43"E	170.67'
L-3	N 11°54'08"E	123.01'
L-4	N 59°44'07"E	152.63'
L-5	N 82°08'43"E	136.26'
L-6	N 79°37'24"E	88.00'
L-7	N 52°23'50"E	127.87'
L-8	N 82°52'42"E	83.58'
L-9	N 77°34'56"E	101.67'
L-10	N 51°07'55"E	35.88'
L-11	N 39°47'30"E	121.40'
L-12	N 71°03'48"E	125.20'
L-13	N 89°51'48"E	70.93'
L-14	S 65°00'11"E	74.70'
L-15	S 53°47'30"E	102.03'
L-16	S 74°18'35"E	96.22'
L-17	N 80°32'06"E	102.24'
L-18	N 60°32'06"E	17.48'
L-19	N 67°56'43"E	130.88'
L-20	N 32°26'07"E	77.88'
L-21	N 31°29'41"E	137.80'
L-22	N 53°30'36"E	102.43'
L-23	N 74°15'38"E	70.59'
L-24	N 67°50'28"E	40.22'
L-25	N 64°20'03"E	31.70'
L-26	N 32°07'58"E	22.98'

**BASIS OF BEARINGS**

Bearings are based on a assumed North meridian, and are for angular calculations only.

**SITUATED IN:**

State of Ohio, County of Muskingum, Township of Cass, and being part of Lot 4, and Lot 5, of Quarter Township 3, Township 3, Range 8, United States Military Lands.



W. H. and A. M. Wagner et al DR 661-471

STATE OF OHIO  
**JACK D. NEWCOME**  
 S-7321  
 REGISTERED PROFESSIONAL SURVEYOR

**OFFICE COPY NOT RECORDABLE**

DESCRIPTION APPROVED By: *[Signature]*

Date 3-31-09  
 Reg. Surveyor No. 7321

**Billie S. Krichbaum Trustee**  
 OR 1622-460  
 Tract Two  
 +- 40.00 Acres

**Billie S. Krichbaum Trustee**  
 OR 1622-460  
 Tract One  
 +- 18.14 Acres

**REFERENCES**  
 GB 1622-460  
 DR 753-81  
 DR 819-145  
 DR 551-471  
 DR 981-88

**LEGEND**  
 Δ Railroad Spike Set  
 ● Iron Pin Found  
 ⊠ Stone Found  
 ○ Axle Found  
 ○ Iron Pipe Found  
 ▲ Railroad Spike Found  
 ● Iron Pin Set, 5/8" rebar  
 ⊞ Monument Found  
 ⊙ FI Nail Found

**PARCEL NO.'S**  
 Tract One  
 All of: 10-30-51-13-000 +- 15.96 Acres  
 Part of: 10-30-51-07-000 +- 2.18 Acres  
 (+- 0.97 Acres in Road R/W)  
 Tract Two  
 Part of: 10-30-51-07-000 +- 40.00 Acres  
 (+- 0.45 Acres in Road R/W)

**Newcomes Surveying Company**  
 6516 Ballard Road  
 Nashport, Ohio  
 740-458-6798

